

PHX DVT GYR

 CITY OF PHOENIX AVIATION DEPARTMENT

Monthly Noise Report

April 2015

Contents

- Page 2 – Introduction/Summary
- Page 3 – Noise Complaints
- Page 4 – Airport Operation Totals & Noise Monitoring Sites
- Page 5 – Fly Friendly Procedures
- Page 7 – “Early Turns” Grand Avenue

Introduction/Summary

The Noise Information Office at Phoenix Sky Harbor International Airport (PHX) collects aircraft noise monitoring and flight operations data to provide the City of Phoenix with up-to-date information concerning aircraft noise exposure to the communities surrounding the Airport. Additionally, Noise Office staff receive and address complaints or concerns from citizens regarding aircraft noise through either the noise hotline (602-683-2669) or the electronic complaint form available on the PHX Web page: <https://skyharbor.com/NoiseComplaint.aspx>.

The following report provides a summary of the data collected by the Noise Office. Each section of the report is intended to show how trends in operation counts, flight direction, complaints, and adherence to the noise abatement procedures are independent of each other and the generation of noise from these operations.

Summary:

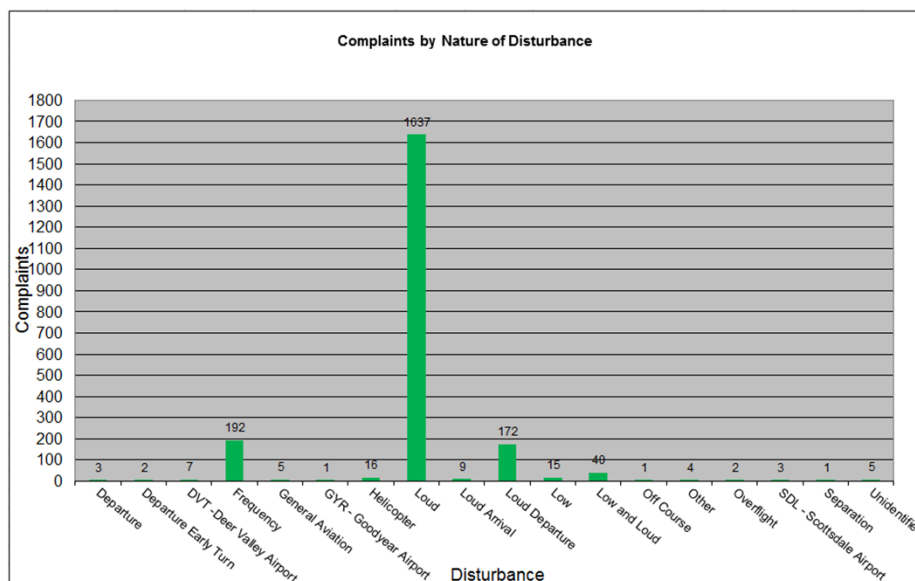
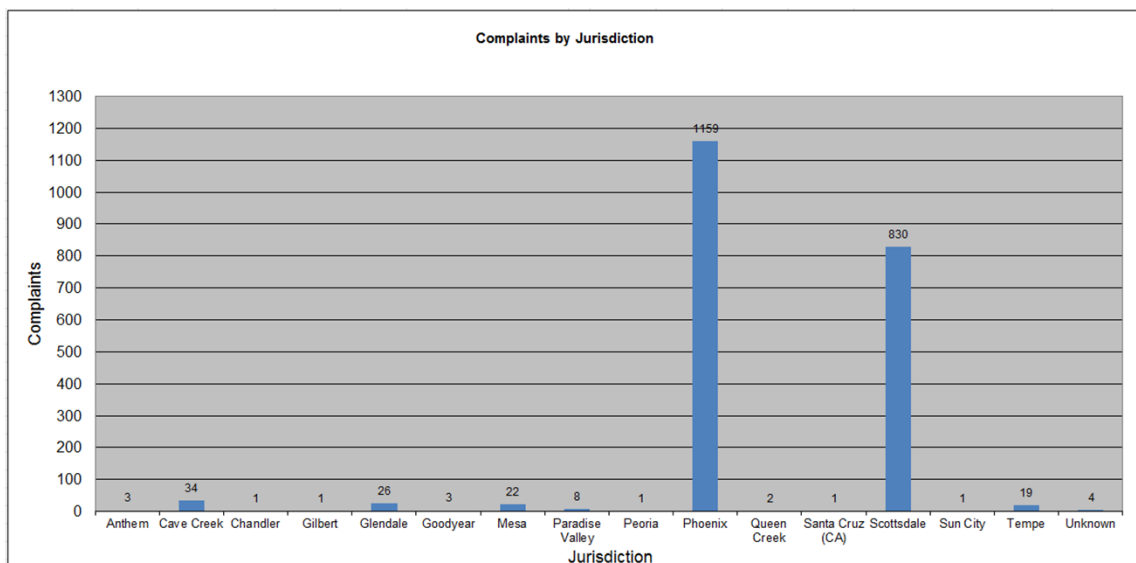
- On September 18, 2014 the Federal Aviation Administration (FAA) implemented new satellite based departure procedures from Phoenix Sky Harbor International Airport.
- The Noise Information Office received 1161 complaints from 272 households in April 2015.
- PHX had 37,797 operations in April 2015. This is a 7.5% decrease from March 2015. Phoenix Goodyear Airport (GYR) had 10,378 operations in April 2015. This is a 0.4% decrease from March 2015. Phoenix Deer Valley Airport (DVT) had 36,062 operations in April 2015. This is a 3.9% increase from March 2015.
- The 4 DME Compliance Rate for April 2015 was 99.34%.
- PHX operated 58.77% westerly and 41.23% easterly in the month of April 2015.

April 2015 Noise Complaints

Complaints: Many factors contribute to the amount of complaints received each month and by how many people. Complaint totals are rarely consistent due to factors ranging from one unusual flight event that generates multiple complaints from a large group of people, a bad weather day or change in the weather, or a new homeowner that did not notice the flight paths before they purchased their home.

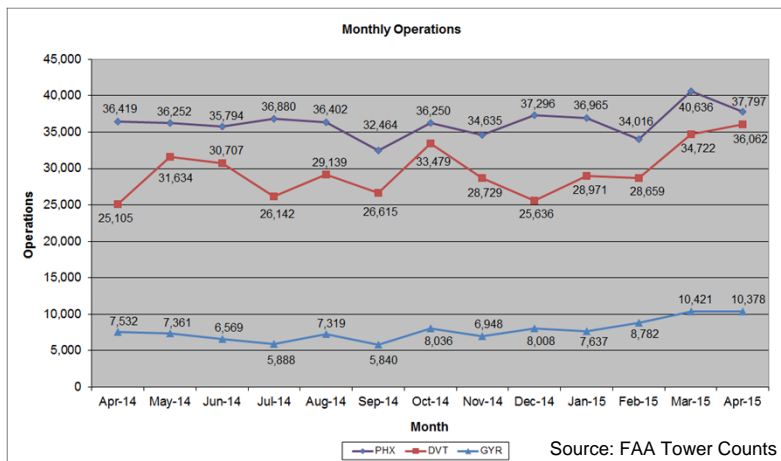
Complaint Statistics

	Apr-14		Apr-15	
	Households	Complaints	Households	Complaints
PHX- Sky Harbor	3	3	264	1648
DVT- Deer Valley	2	2	6	11
GYR- Goodyear	0	0	1	1
Totals	5	5	271	1660



Airport Operations

Aircraft operations generally fluctuate due to seasonal and passenger demand. The graphic below depicts operation totals at Phoenix Sky Harbor International Airport (PHX), Phoenix Deer Valley Airport (DVT) and Phoenix Goodyear Airport (GYR). Examples of peak travel times are spring break, major sporting events, the end of the school year and winter holidays.

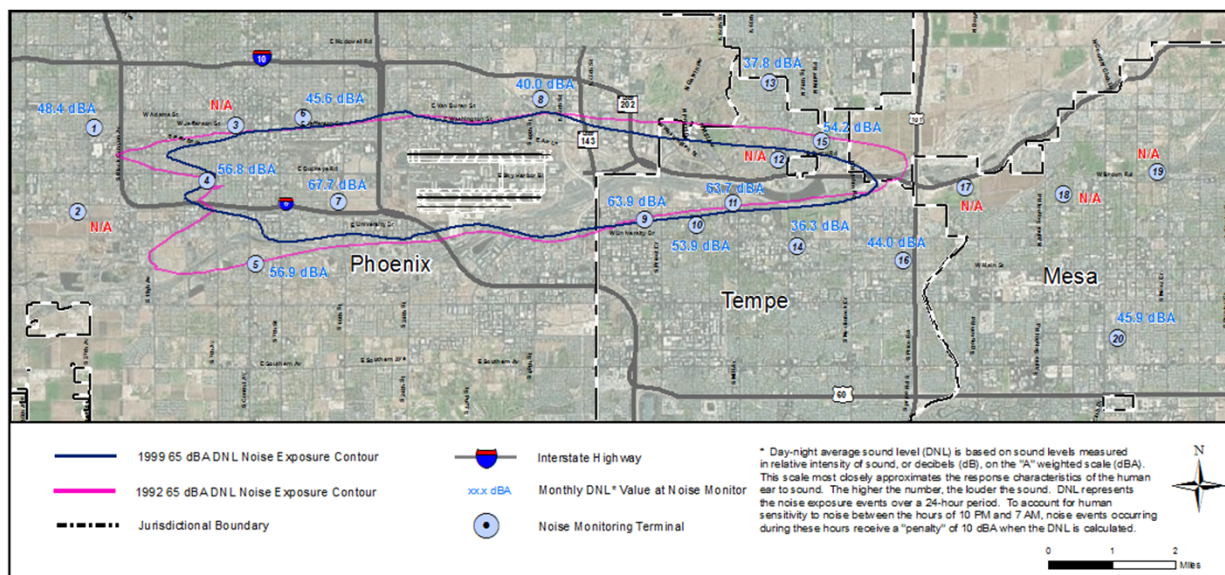


Noise Monitoring Sites

Noise Monitors: PHX has 20 noise monitors in the communities surrounding the Airport. These are located underneath the arrival and departure paths and in areas close to the Airport’s noise contours.

The monitors record aircraft noise events on a continual basis which then are correlated with actual flight data from the FAA. Noise Office staff can then associate noise complaints to aircraft operations and any noise events correlated with those flights. The Noise Office also monitors changes in monthly and annual noise readings at each location.

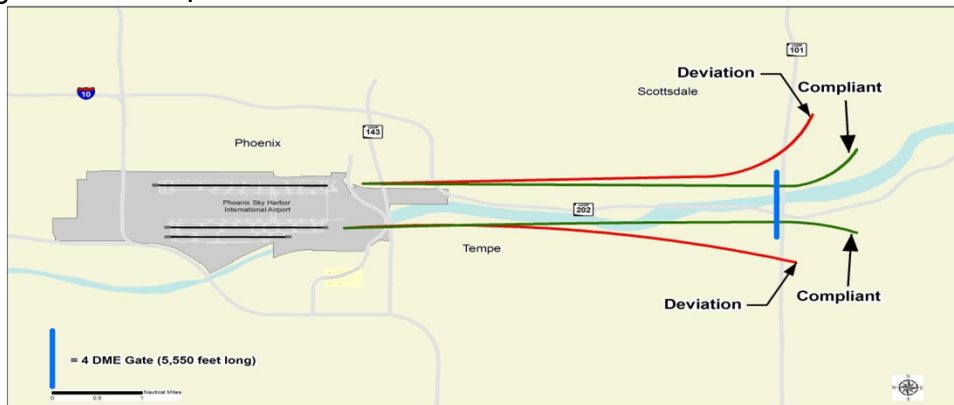
On the whole, aircraft related noise is on a decline from historical levels when older aircraft were operating at Phoenix Sky Harbor International Airport.



Note: Noise Monitoring Sites with an "NA" may be due to maintenance being performed at our around the site which may be out of the control of the Aviation Department. The Office is working to ensure all sites are operational.

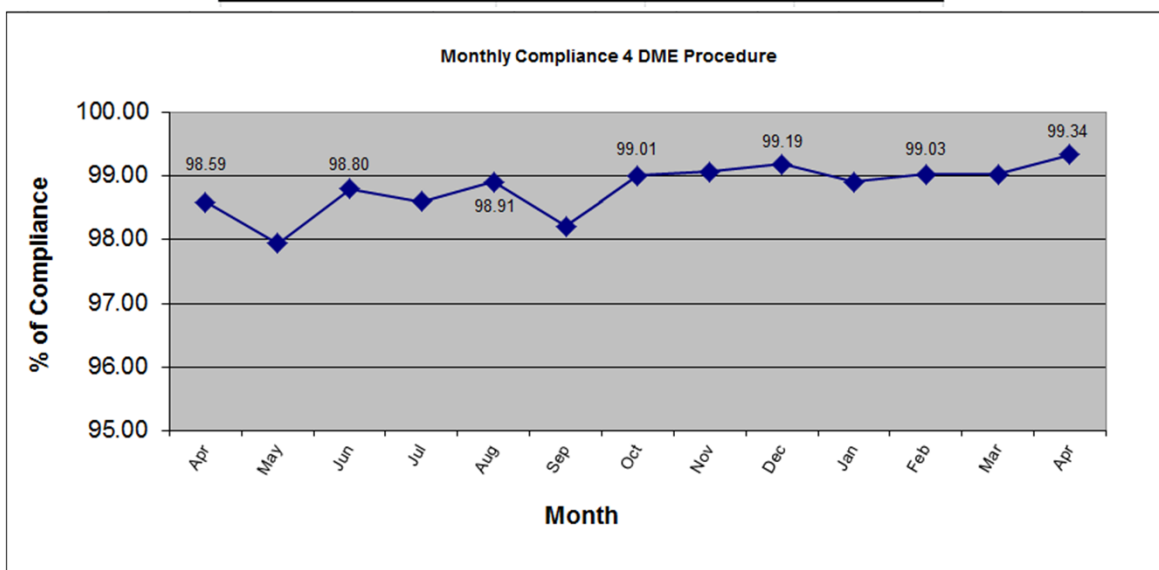
Fly Friendly Procedures

4 DME: The 4 DME (Distance Measuring Equipment) departure procedure directs jet propelled aircraft departing to the east to travel generally along the Salt River for approximately 5 miles from the airport before turning. In the event that an aircraft deviates from the 4 DME departure procedure, Noise Office staff will contact the carrier to determine the reason for the deviation and encourage future compliance.



April 2015 4 DME compliance rate: 99.34%

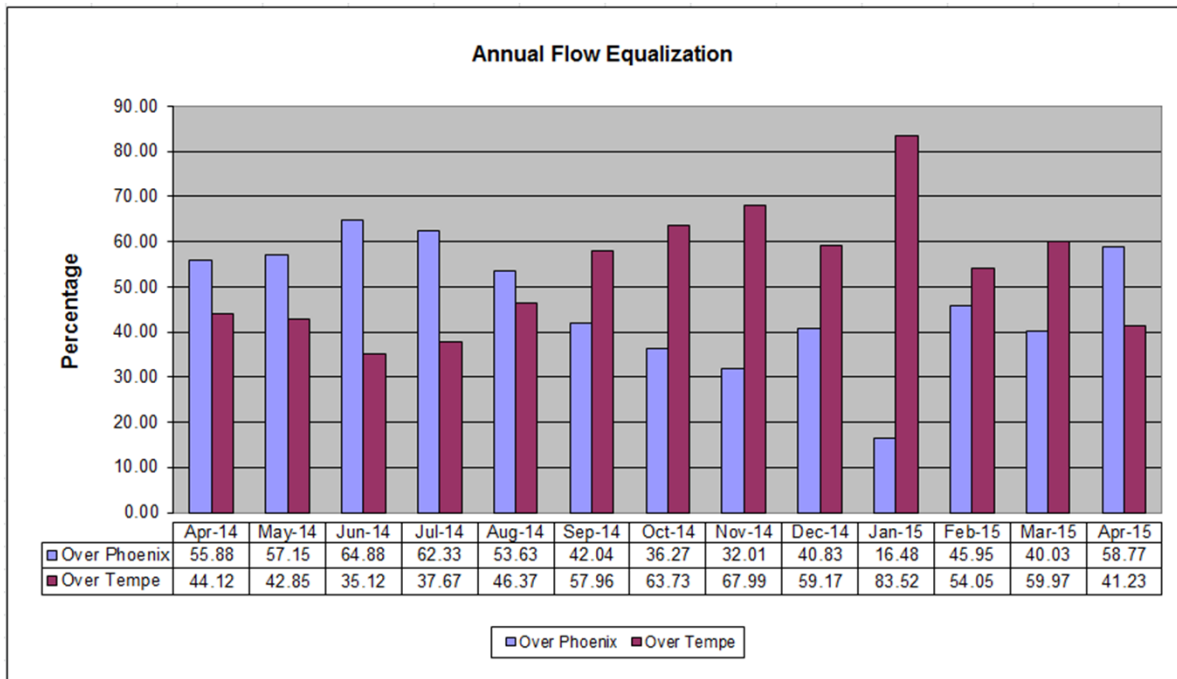
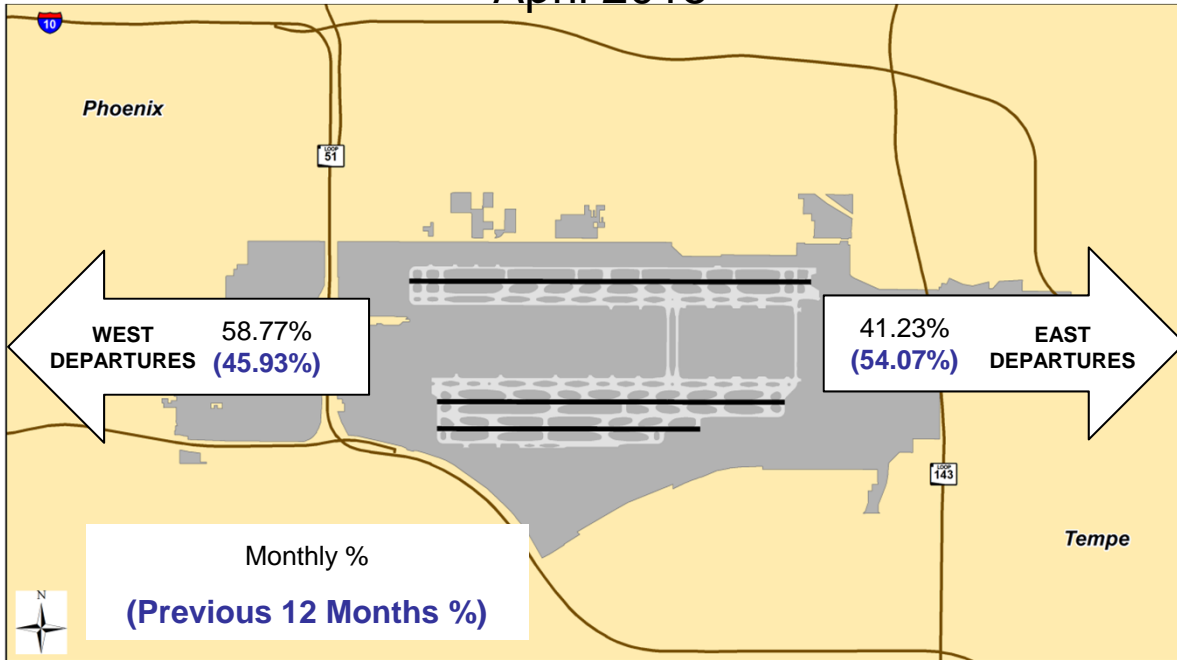
April 2015 4 DME Deviations			
Operators with 75 or more jet flights to the east shown			
Airline Name	Deviations	Total Departures to the East	% Compliance
American Airlines	9	2,783	99.68
Southwest Airlines	10	2,028	99.51
SkyWest Airlines	4	663	99.40
Delta Airlines	2	295	99.32
United Airlines	1	277	99.64
General Aviation	11	157	92.99



Fly Friendly Procedures Continued

Equalization: Phoenix Sky Harbor International Airport has a goal to equalize the amount of aircraft departures between the east and west over an annualized period. Monthly equalization data is shared with the FAA to help meet this goal. Because aircraft need to fly into the wind for added lift, there are times when weather can cause longer periods of flow in one direction versus the other.

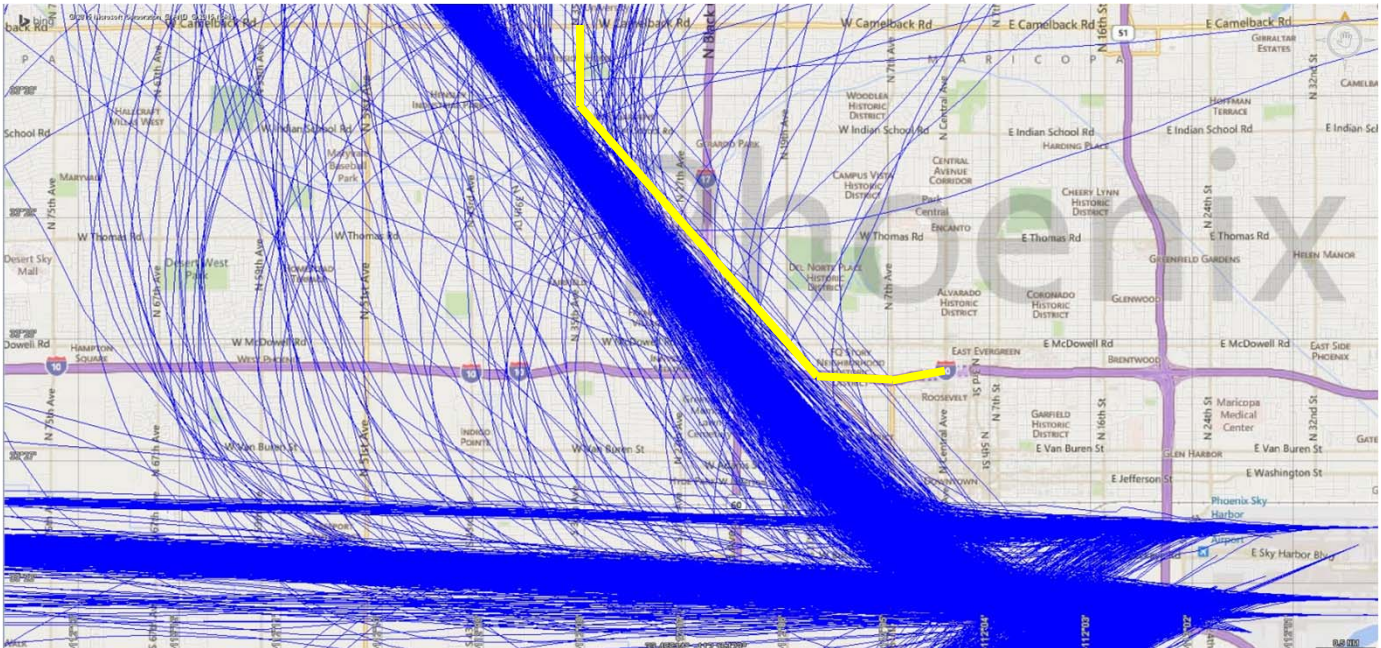
April 2015



“Early Turns” - Grand Avenue Month of April 2015

The graphic and table presented below was generated by the City of Phoenix’s Noise Information Office and is intended for display purposes only. The criteria used to gather and display the information is the interpretation of the Noise Office. On November 14, 2014 the FAA instructed PHX air traffic controllers to not issue early turns to aircraft unless doing so for safety purposes. The “early turns” captured below are reported to the FAA and respective airlines for analysis and corrective action as appropriate. The coordinate based “TWSND” waypoint (not depicted on map) is approximately located at the intersection of Grand Avenue and West Bethany Home Road and is a fly-by waypoint.

Map of Grand Avenue and “Early Turns”



"Early Turns" - Grand Avenue 2015	
Counts derived from subjective analysis and subject to change	
Month	Counts
January	71
February	40
March	69
April	71
May	-
June	-
July	-
August	-
September	-
October	-
November	-
December	-
Year To Date	251

Noise Information Office
3400 E Sky Harbor Blvd Suite 3300
Phoenix, AZ 85034

Phone: 602-683-2669
Fax: 602-273-3472
Email: aircraft.noise@phoenix.gov

Special accommodations/alternate format (large print, Braille, audio tape or diskette) are available upon request. Call 602-273-4062 ADA/TTY 1-800-781-1010.

“Early Turns” - Grand Avenue Month of April 2015 Continued April “Early Turns” Information Table

Operation Time	Type	Flight	Aircraft	Destination
2015-04-17 11:38:26	Commercial	AAL1803	A321	PHL
2015-04-17 12:52:40	Commercial	AAL1898	A321	DEN
2015-04-08 07:45:32	Commercial	AAL465	A321	ORD
2015-04-16 19:07:28	Commercial	AAL514	A319	CMH
2015-04-17 09:10:28	Commercial	AAL520	A319	BWI
2015-04-17 12:54:23	Commercial	AAL680	A320	DCA
2015-04-23 10:26:42	Commercial	AAL720	A321	CLT
2015-04-12 12:51:14	Commercial	AAL895	A321	ORD
2015-04-12 01:44:30	Commercial	AJT453	B762	YMX
2015-04-13 17:33:52	Commercial	ASA171	B738	UNK
2015-04-17 19:10:00	Commercial	ASH5558	CRJ9	DSM
2015-04-17 12:59:41	Commercial	ASH5588	CRJ9	OMA
2015-04-05 20:08:06	Commercial	ASH5632	CRJ2	ABQ
2015-04-16 19:02:49	Commercial	ASH5632	CRJ9	ABQ
2015-04-17 19:04:59	Commercial	ASH5632	CRJ9	ABQ
2015-04-07 16:13:08	Commercial	AWE618	A319	BWI
2015-04-14 15:36:15	Commercial	BJSS32	CL60	SDL
2015-04-18 17:01:28	Commercial	EJA227	F2TH	SDL
2015-04-16 10:32:23	Commercial	EJA574	C56X	SDL
2015-04-15 21:44:03	Commercial	JBU602	A320	BOS
2015-04-17 19:44:32	Commercial	KFS65	LJ35	YQR
2015-04-25 21:25:25	Privately Registered	N311VP	C501	PVU
2015-04-11 19:28:45	Privately Registered	N390JV	PRM1	SDL
2015-04-05 02:15:39	Privately Registered	N403DP	LJ35	ABQ
2015-04-12 00:22:41	Privately Registered	N45MF	LJ35	ABQ
2015-04-16 15:49:28	Privately Registered	N589K	GLF5	UNK
2015-04-01 18:28:02	Privately Registered	N603KE	GLF4	STS
2015-04-08 17:53:43	Privately Registered	N632KA	FA20	SDL
2015-04-14 16:06:33	Privately Registered	N75WP	C560	SJN
2015-04-24 15:13:24	Privately Registered	N789DT	PRM1	SDL
2015-04-18 13:45:50	Privately Registered	N84FM	PRM1	ICT
2015-04-20 18:05:08	Privately Registered	N962KC	C560	OJC
2015-04-09 16:14:44	Privately Registered	N989PT	C650	SDL
2015-04-09 15:46:54	Commercial	NWF338	C560	PWK
2015-04-15 16:08:03	Commercial	PFT574	C560	APA
2015-04-16 00:00:03	Commercial	ROU1834	A319	YYZ
2015-04-20 00:06:57	Commercial	ROU1834	A319	YYZ
2015-04-23 15:22:21	Commercial	SKW219A	CRJ9	ABQ
2015-04-12 20:04:03	Commercial	SKW276X	CRJ2	MRY
2015-04-25 18:56:03	Commercial	SKW2816	CRJ2	SLC
2015-04-19 13:52:05	Commercial	SKW292W	CRJ2	MRY
2015-04-08 09:27:38	Commercial	SKW299M	CRJ2	GJT
2015-04-17 17:21:43	Commercial	SKW4560	CRJ9	SLC
2015-04-01 11:24:41	Commercial	SKW4720	CRJ9	SEA
2015-04-25 18:29:32	Commercial	SKW4799	CRJ9	SEA
2015-04-06 14:29:24	Commercial	SWA1166	B733	GEG
2015-04-04 21:04:55	Commercial	SWA1226	B737	DEN
2015-04-04 17:40:07	Commercial	SWA1231	B738	MDW
2015-04-07 14:19:12	Commercial	SWA137	B733	MKE
2015-04-08 08:16:00	Commercial	SWA1541	B733	ABQ
2015-04-16 08:10:20	Commercial	SWA1541	B737	ABQ
2015-04-03 06:03:13	Commercial	SWA2520	B738	MDW
2015-04-13 16:17:00	Commercial	SWA2798	B733	LAS
2015-04-04 15:34:48	Commercial	SWA2934	B733	PDX
2015-04-09 23:41:13	Commercial	SWA295	B737	LAS
2015-04-26 14:46:50	Commercial	SWA2968	B733	BUR
2015-04-01 11:19:34	Commercial	SWA332	B733	ABQ
2015-04-08 18:20:32	Commercial	SWA3325	B737	MDW
2015-04-14 17:28:52	Commercial	SWA3739	B738	DEN
2015-04-03 05:53:47	Commercial	SWA3766	B737	MKE
2015-04-29 21:14:14	Commercial	SWA380	B737	PDX
2015-04-27 20:44:54	Commercial	SWA4460	B737	MSP
2015-04-07 14:21:31	Commercial	SWA4544	B737	CMH
2015-04-08 17:26:07	Commercial	SWA458	B738	BWI
2015-04-03 05:35:51	Commercial	SWA473	B733	ABQ
2015-04-20 16:26:17	Commercial	SWA563	B737	CMH
2015-04-16 10:28:42	Commercial	SWA640	B737	PIT
2015-04-17 10:29:42	Commercial	SWA640	B737	PIT
2015-04-09 19:54:20	Commercial	SWA738	B738	MDW
2015-04-13 21:28:37	Commercial	SWA839	B737	ABQ
2015-04-17 13:30:41	Commercial	SWA945	B737	DEN

Noise Information Office
3400 E Sky Harbor Blvd Suite 3300
Phoenix, AZ 85034

Phone: 602-683-2669
Fax: 602-273-3472
Email: aircraft.noise@phoenix.gov

Special accommodations/alternate format (large print, Braille, audio tape or diskette) are available upon request. Call 602-273-4062 ADA/TTY 1-800-781-1010.