

PHX DVT GYR

 CITY OF PHOENIX AVIATION DEPARTMENT

Monthly Noise Report

September 2016

Contents

- Page 2 – Introduction/Summary
- Page 3 – Noise Complaints
- Page 4 – Airport Operation Totals & Noise Monitoring Sites
- Page 5 – Fly Friendly Procedures
- Page 7 – “Early Turns” Grand Avenue

Introduction/Summary

The City of Phoenix Aviation Department Airspace and Noise Section collects aircraft noise monitoring and flight operations data to provide the community with up-to-date information concerning aircraft noise exposure. Additionally, staff addresses noise concerns received from residents through either the noise hotline (844-244-7430) or the electronic complaint forms available on the Phoenix Sky Harbor International Airport's (PHX) webpage: <https://www.skyharbor.com/FlightPaths/FileAConcernContactUs> (PublicVue, Webform, or Mobile App).

The following report provides a summary of the data collected for the preceding month. Each component of the report is intended to show observable trends in operation counts, flight direction, complaints, and adherence to noise abatement procedures.

Summary:

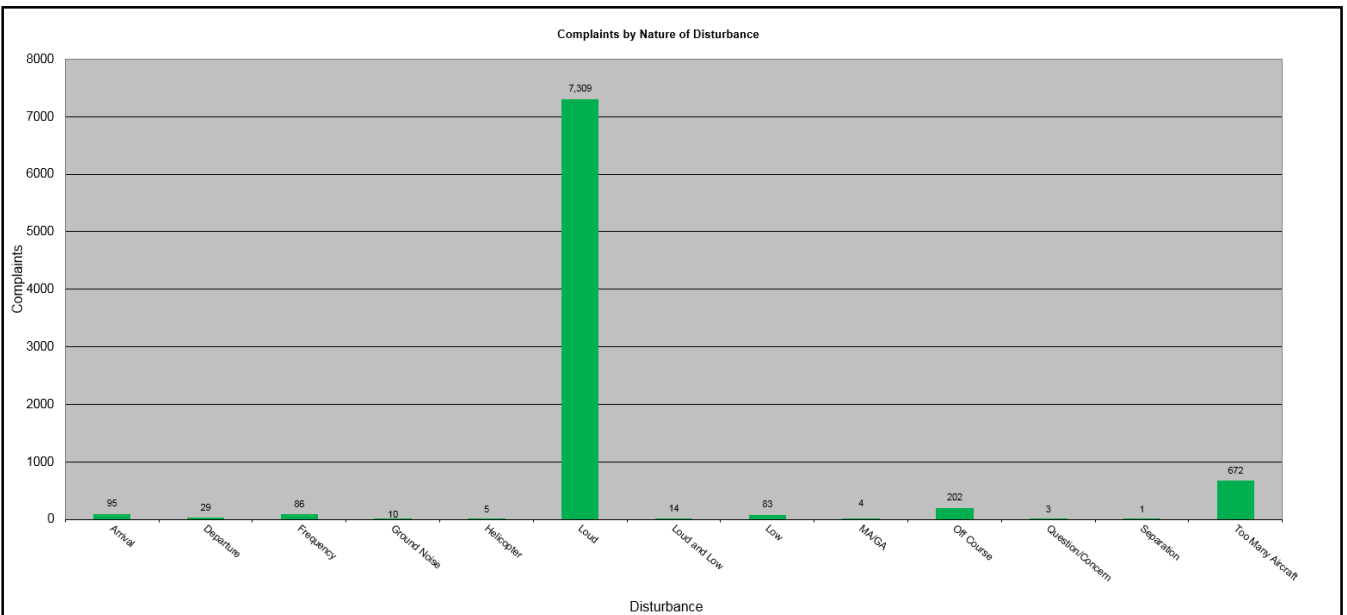
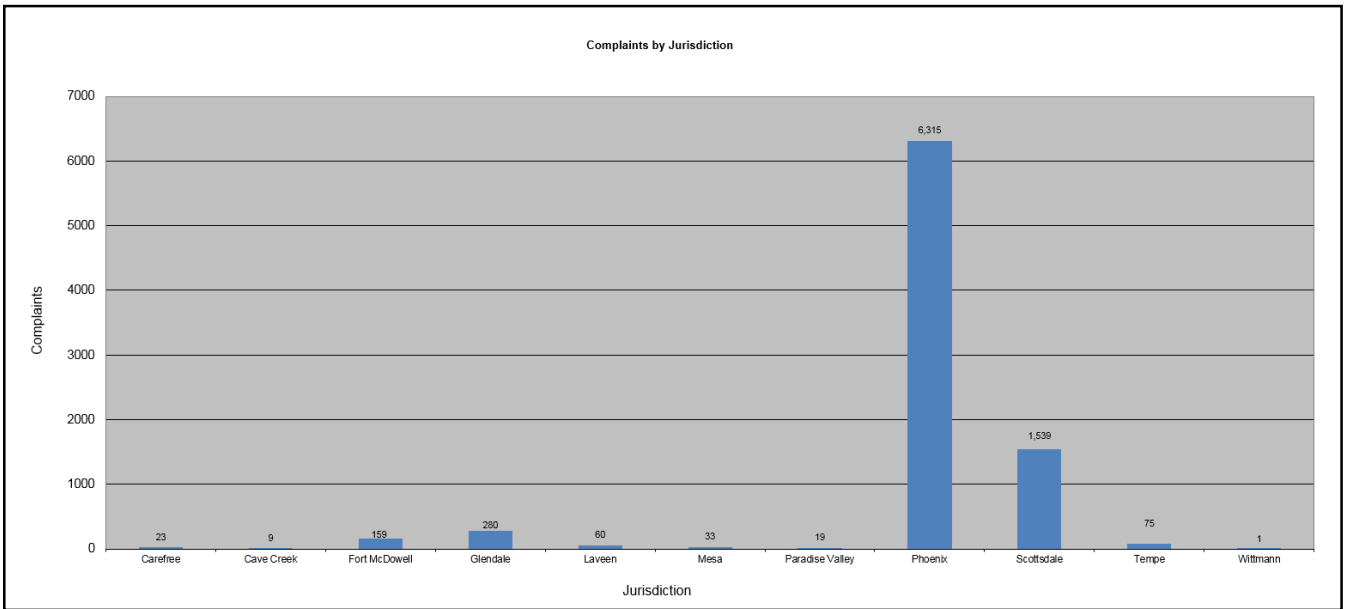
- The Airspace and Noise Section received 8,134 complaints from 188 households with regard to PHX, DVT, & GYR airports for the month of September 2016, and 379 noise complaints for aircraft arriving or departing other airports around Phoenix.
- PHX had 32,974 operations in September 2016. This is a 8.7% decrease from August 2016. Phoenix Deer Valley Airport (DVT) had 32,570 operations in September 2016. This is a 28.2% increase from August 2016. Phoenix Goodyear Airport (GYR) had 9,790 operations in September 2016. This is a 20.4% increase from August 2016.
- The 4 DME Compliance Rate for September 2016 was 99.69%.
- PHX operated 46.87% westerly and 53.13% easterly in the month of September 2016.

September 2016 Noise Complaints

Complaints: Many factors contribute to the amount of complaints received each month and by how many people. Complaint totals vary due to factors ranging from one unusual flight event that generates multiple complaints from a large group of people, a bad weather day or change in the weather, or a new homeowner that did not notice the flight paths before they purchased their home.

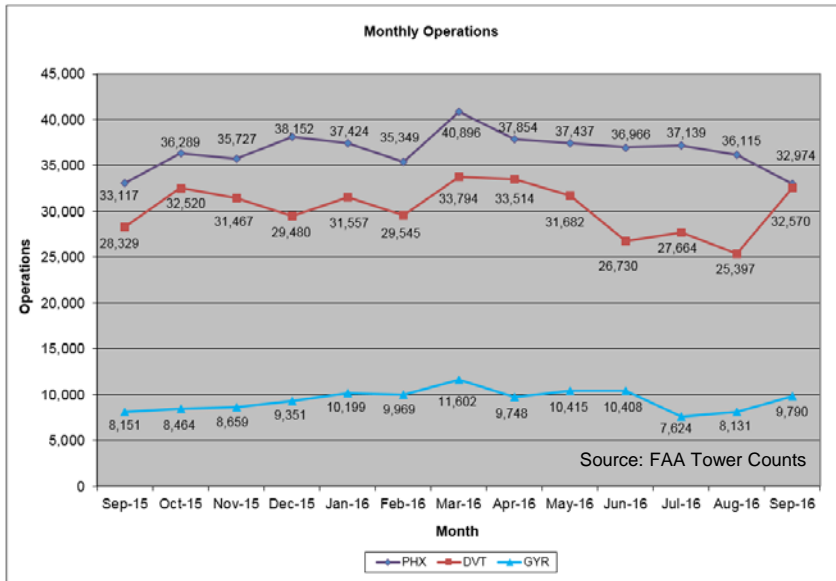
Complaint Statistics

	Sep-15			Sep-16	
	Households	Complaints		Households	Complaints
PHX- Sky Harbor	138	1,542		175	8,095
DVT- Deer Valley	14	75		12	38
GYR- Goodyear	2	2		1	1
Totals	154	1,619		188	8,134



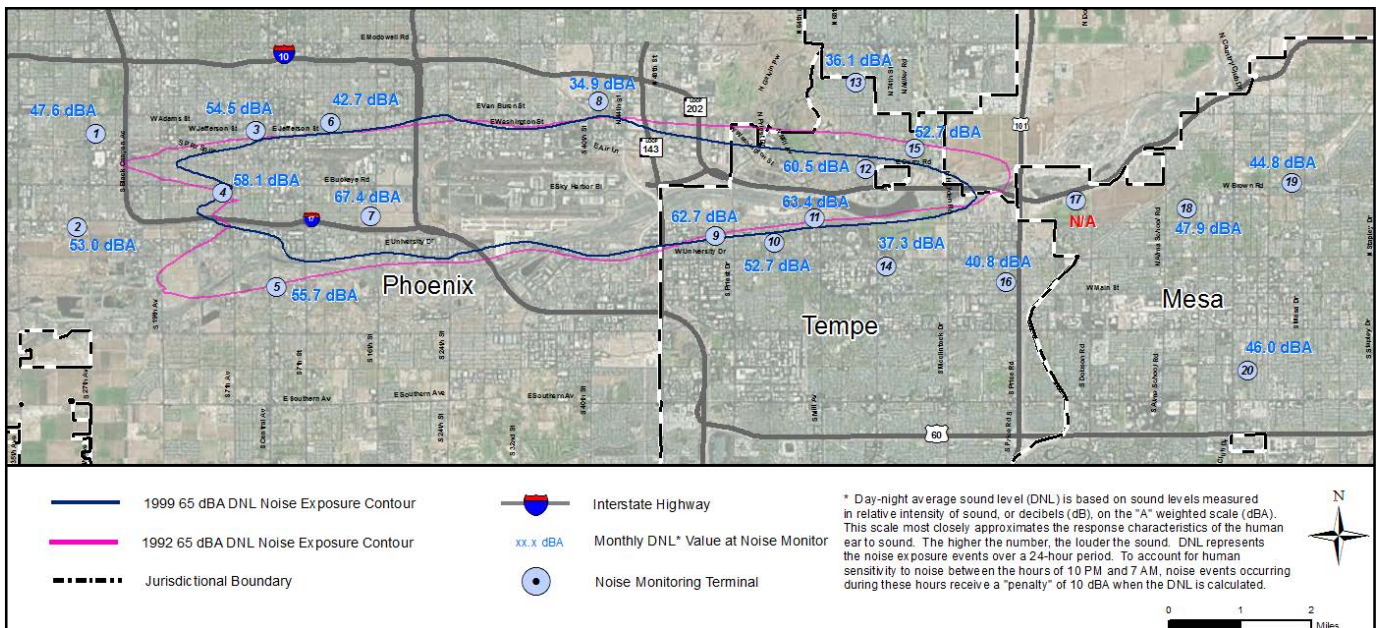
Airport Operations

Aircraft operations generally fluctuate due to seasonal and passenger demand. The graphic below depicts operation totals at Phoenix Sky Harbor International Airport (PHX), Phoenix Deer Valley Airport (DVT) and Phoenix Goodyear Airport (GYR). Examples of peak travel times are spring break, major sporting events, the end of the school year and winter holidays.



Noise Monitoring Sites

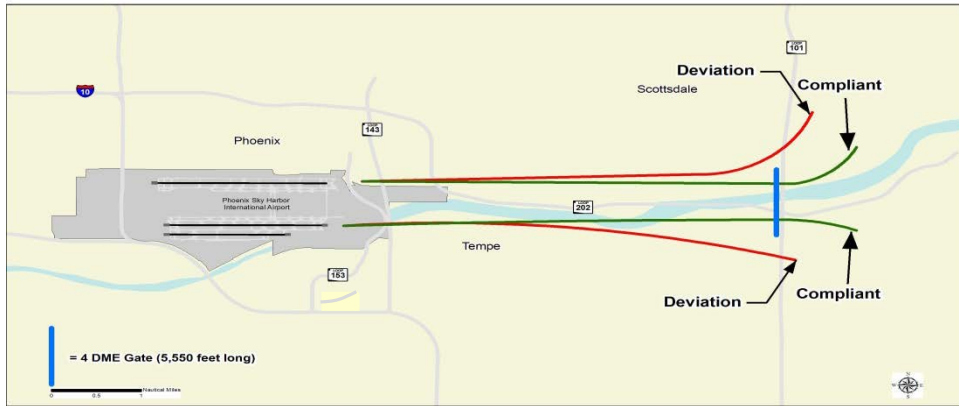
Noise Monitors: PHX has 20 noise monitors in the communities surrounding the Airport. They are located underneath the arrival and departure paths and in areas close to the Airport's noise contours. The monitors record aircraft noise events on a continual basis which then are compared with actual flight data from the FAA. Staff can then tie noise complaints to aircraft operations and any noise events correlated with those flights. Staff also monitors changes in monthly and annual noise readings at each location.



Note: Noise Monitoring Sites with an "N/A" did not provide usable data for the preceding month due to maintenance or operational testing, or non-aircraft noise events around the site.

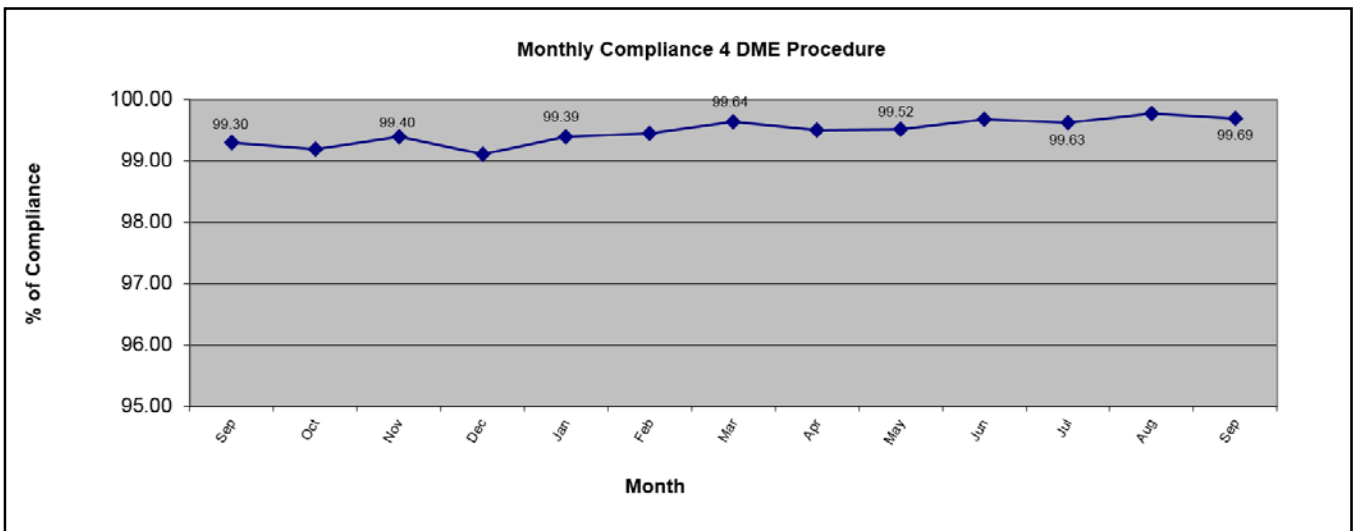
Fly Friendly Procedures

4 DME: The 4 DME (Distance Measuring Equipment) departure procedure directs jet aircraft departing to the east to travel generally along the Salt River for approximately 6 miles from the airport before turning. In the event that an aircraft deviates from the 4 DME departure procedure, Airspace and Noise Section staff will contact the carrier to determine the reason for the deviation and encourage future compliance.



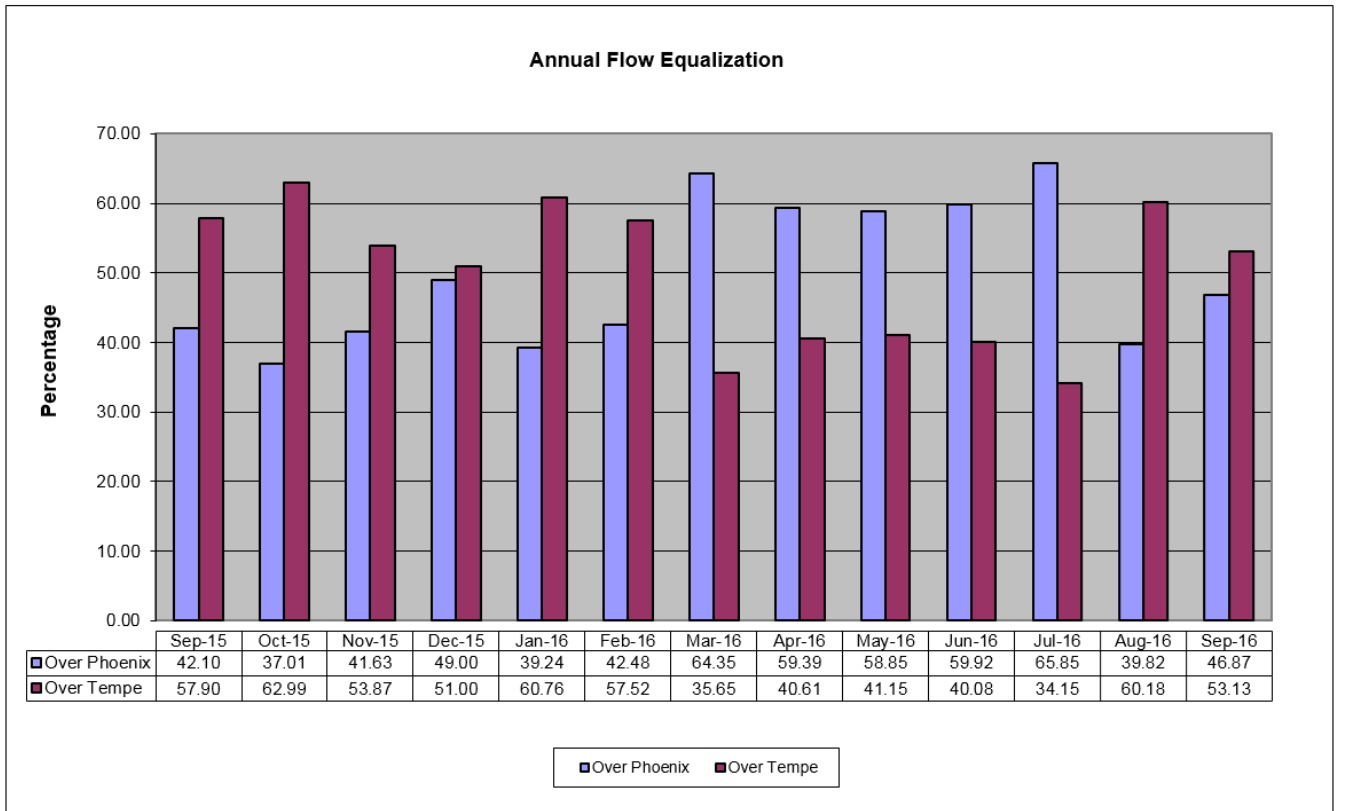
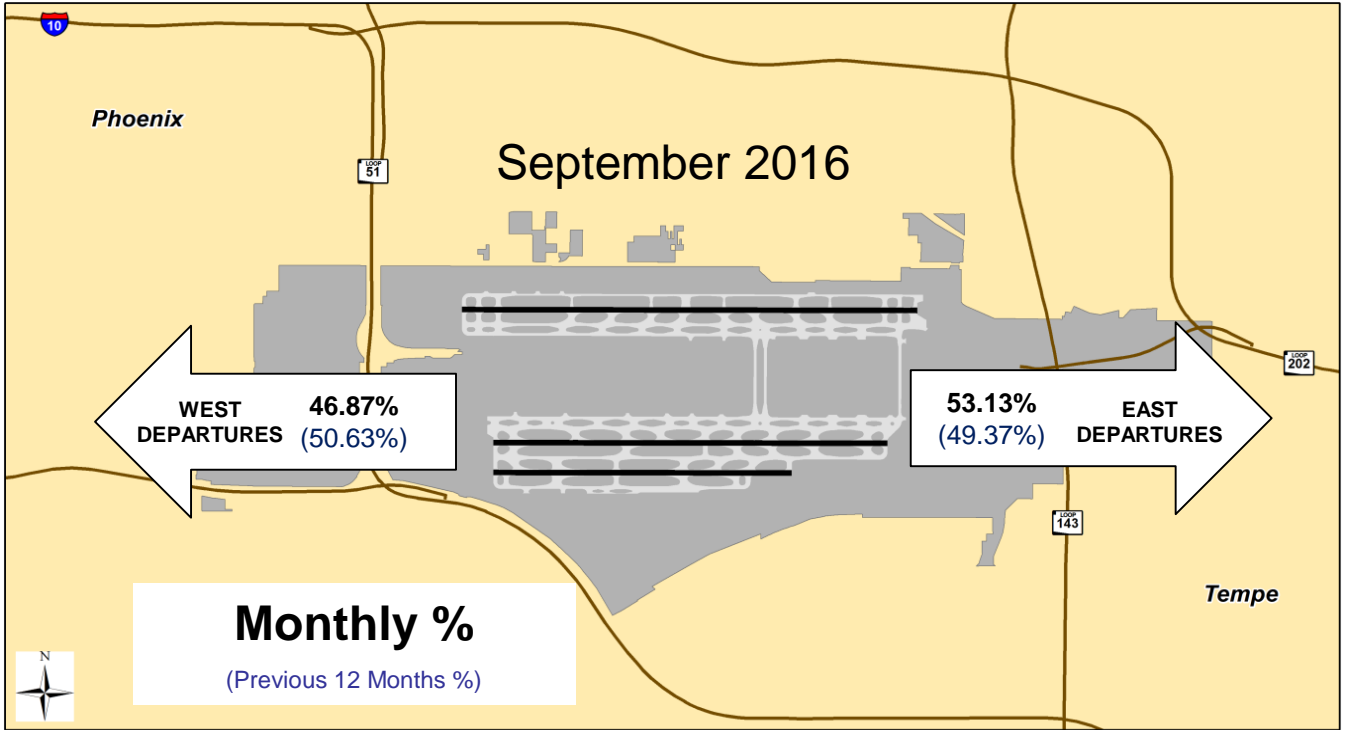
September 2016 4DME compliance rate: 99.69%

September 2016 4 DME Deviations			
Operators with 75 or more jet flights to the east shown			
Airline Name	Deviations	Total Departures to the East	% Compliance
Southwest Airlines	3	2,428	99.88
American Airlines	7	2,321	99.70
Mesa Airlines	0	755	100.00
SkyWest Airlines	3	683	99.56
Delta Airlines	0	338	100.00
United Airlines	0	301	100.00
General Aviation	6	151	96.03
Frontier Airlines	1	128	99.22
FedEx Airlines	1	103	99.03
Alaska Airlines	0	96	100.00
UPS Airlines	1	78	98.72



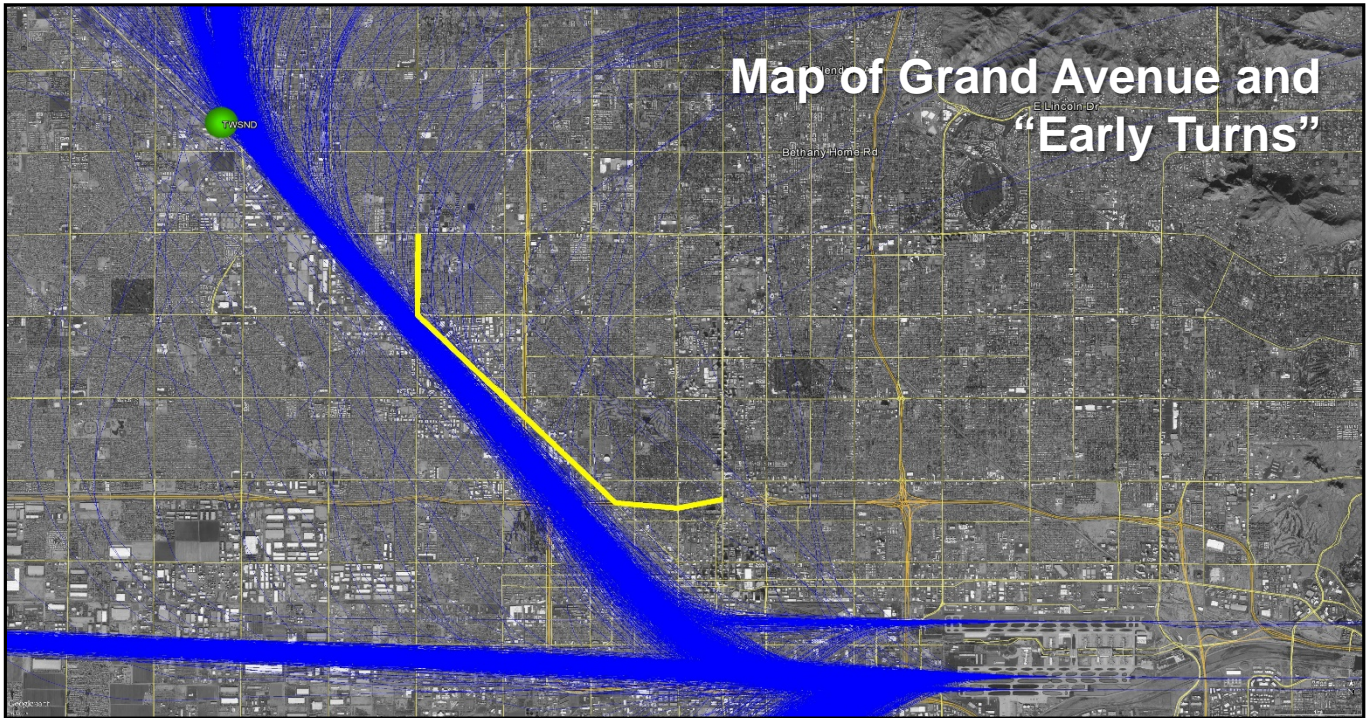
Fly Friendly Procedures Continued

Equalization: Phoenix Sky Harbor International Airport has a goal to equalize the amount of aircraft departures between the east and west over an **annualized** period. Because aircraft need to fly into the wind for added lift, there are times when weather can cause longer periods of flow in one direction versus the other.



“Early Turns” - Grand Avenue Month of September 2016

While a formal turning “gate” does not exist for RNAV northwest departures, the City has informally established a gate for monitoring purposes; generally depicted by the yellow line on the map below. Staff monitors the amount of jet aircraft that turn back to due north or east before going past the informal gate and publishes that data so that the community has a sense of flight tracks that deviate from the RNAV corridor.



"Early Turns" - Grand Avenue 2016	
Counts derived from subjective analysis and subject to change	
Month	Counts
January	69
February	21
March	25
April	49
May	31
June	29
July	31
August	34
September	38
October	
November	
December	
Year To Date	327

“Early Turns” - Grand Avenue

Month of September 2016 Continued

September 1-30 “Early Turns” Info Table

#	Operation Time	Type	Flight	AC Type	Runway	Destination
1	2016-09-09 22:08:17	Commercial	AAL1280	B738	26	EWR
2	2016-09-22 14:56:50	Commercial	AAL1712	A320	25R	PHL
3	2016-09-06 13:01:08	Commercial	AAL2527	B738	26	JFK
4	2016-09-22 09:36:52	Commercial	AAL406	A320	25R	DTW
5	2016-09-22 15:41:34	Commercial	AAL412	A320	25R	DTW
6	2016-09-01 18:00:31	Commercial	AAL636	A321	25R	LAS
7	2016-09-06 13:03:28	Commercial	AAL680	B752	26	DCA
8	2016-09-22 12:35:47	Commercial	AAL776	A321	25R	PHL
9	2016-09-22 15:07:44	Commercial	AAL788Q	A321	25R	CLT
10	2016-09-22 15:50:01	Commercial	AAL803	A319	25R	DSM
11	2016-09-22 14:51:11	Commercial	ASA633	B739	25R	SEA
12	2016-09-22 12:32:54	Commercial	ASH5719	CRJ9	25R	ABQ
13	2016-09-06 15:38:21	Commercial	ASH5989	CRJ9	25R	ABQ
14	2016-09-21 16:46:34	Commercial	ASH5989	CRJ9	25R	ABQ
15	2016-09-22 15:09:22	Commercial	ASH5994	CRJ2	25R	MRY
16	2016-09-03 00:04:08	Commercial	JBU136	A320	26	JFK
17	2016-09-05 22:40:19	Privately Registered	N18SK	FA10	25L	GYJ
18	2016-09-22 15:35:07	Privately Registered	N75WP	C560	25R	SJN
19	2016-09-22 15:43:40	Commercial	SKW3039	CRJ7	25R	SLC
20	2016-09-02 15:36:36	Commercial	SKW3042	CRJ2	25R	DRO
21	2016-09-06 16:27:16	Commercial	SWA1924	B737	25R	STL
22	2016-09-14 18:49:28	Commercial	SWA194	B737	25R	MKE
23	2016-09-22 15:33:32	Commercial	SWA2125	B738	25R	MDW
24	2016-09-20 09:52:58	Commercial	SWA226	B737	25R	SLC
25	2016-09-06 13:08:05	Commercial	SWA2264	B737	25R	MCI
26	2016-09-06 16:18:51	Commercial	SWA3123	B737	25R	IND
27	2016-09-22 15:13:01	Commercial	SWA4045	B737	25R	ONT
28	2016-09-22 10:00:00	Commercial	SWA516	B737	25R	CMH
29	2016-09-14 14:40:13	Commercial	SWA523	B737	25R	MDW
30	2016-09-22 15:52:04	Commercial	SWA523	B737	25R	MDW
31	2016-09-08 17:04:36	Commercial	SWA536	B733	25R	DEN
32	2016-09-06 18:49:06	Commercial	SWA538	B737	25R	OKC
33	2016-09-20 06:00:38	Commercial	SWA541	B737	25R	SLC
34	2016-09-22 15:04:22	Commercial	SWA578	B733	25R	GEG
35	2016-09-18 14:44:38	Commercial	SWA6020	B733	25R	GEG
36	2016-09-06 12:41:49	Commercial	SWA604	B733	25R	LIT
37	2016-09-14 11:46:38	Commercial	SWA899	B738	25R	MKE
38	2016-09-14 23:03:03	Commercial	UAL1976	B738	25R	EWR