

PHX DVT GYR

 CITY OF PHOENIX AVIATION DEPARTMENT

Monthly Noise Report

June 2015

Contents

- Page 2 – Introduction/Summary
- Page 3 – Noise Complaints
- Page 4 – Airport Operation Totals & Noise Monitoring Sites
- Page 5 – Fly Friendly Procedures
- Page 7 – “Early Turns” Grand Avenue

Introduction/Summary

The Noise Information Office at Phoenix Sky Harbor International Airport (PHX) collects aircraft noise monitoring and flight operations data to provide the City of Phoenix with up-to-date information concerning aircraft noise exposure to the communities surrounding the Airport. Additionally, Noise Office staff receive and address complaints or concerns from citizens regarding aircraft noise through either the noise hotline (844-244-7430) or the electronic complaint form available on the PHX Web page: <https://skyharbor.com/NoiseComplaint.aspx>.

The following report provides a summary of the data collected by the Noise Office. Each section of the report is intended to show how trends in operation counts, flight direction, complaints, and adherence to the noise abatement procedures are independent of each other and the generation of noise from these operations.

Summary:

- The Noise Information Office received 2,528 complaints from 244 households in June 2015.
- PHX had 36,445 operations in June 2015. This is a 1.2% decrease from May 2015. Phoenix Goodyear Airport (GYR) had 9,936 operations in June 2015. This is a 5.4% decrease from May 2015. Phoenix Deer Valley Airport (DVT) had 28,572 operations in June 2015. This is a 12.4% decrease from May 2015.
- The 4 DME Compliance Rate for June 2015 was 99.52%.
- PHX operated 65.12% westerly and 34.88% easterly in the month of June 2015.

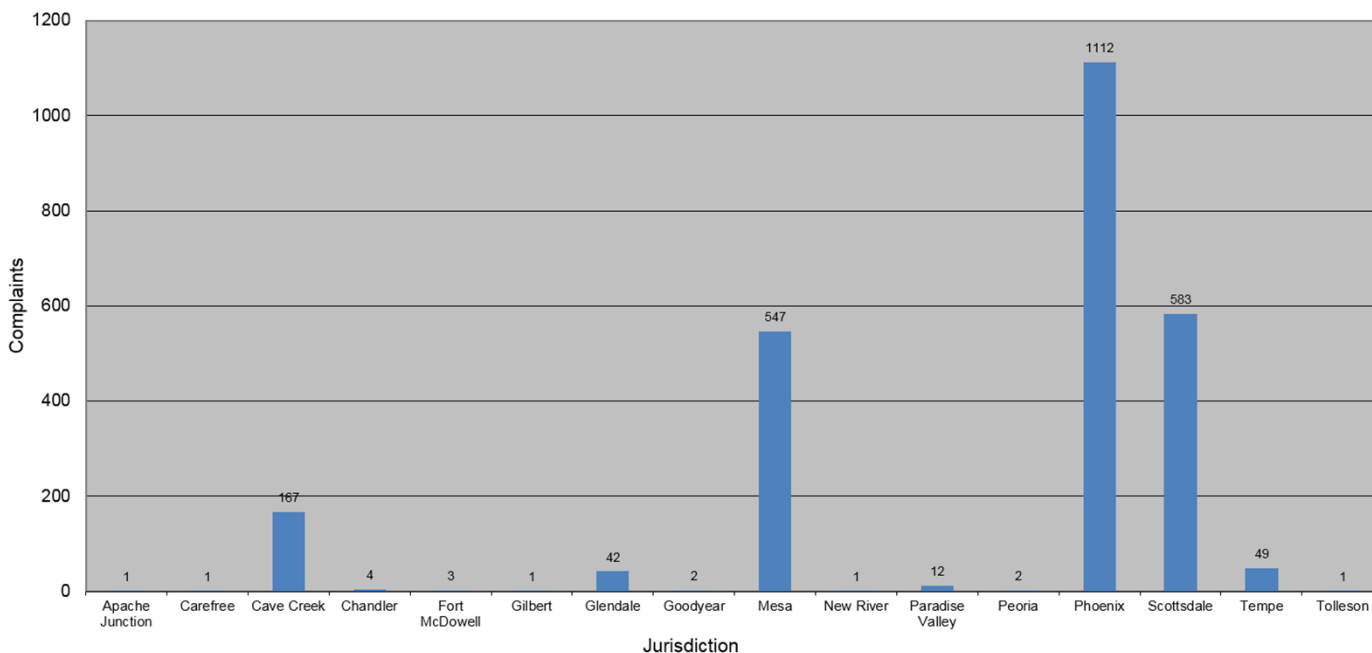
June 2015 Noise Complaints

Complaints: Many factors contribute to the amount of complaints received each month and by how many people. Complaint totals are rarely consistent due to factors ranging from one unusual flight event that generates multiple complaints from a large group of people, a bad weather day or change in the weather, or a new homeowner that did not notice the flight paths before they purchased their home.

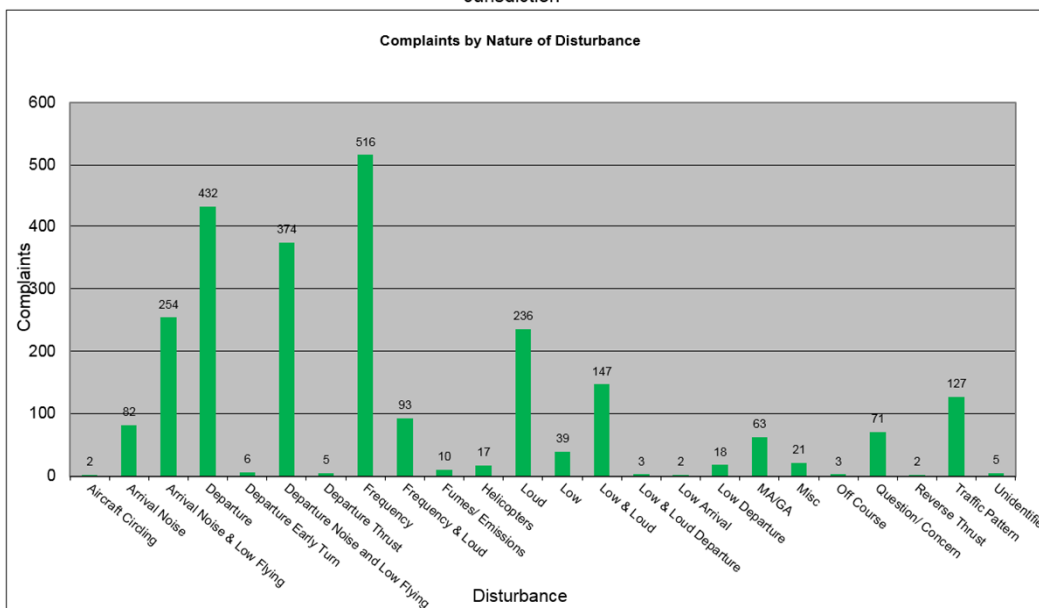
Complaint Statistics

	Jun-14		Jun-15	
	Households	Complaints	Households	Complaints
PHX- Sky Harbor	0	0	226	2,445
DVT- Deer Valley	2	4	15	79
GYR- Goodyear	1	1	3	4
Totals	3	5	244	2,528

Complaints by Jurisdiction

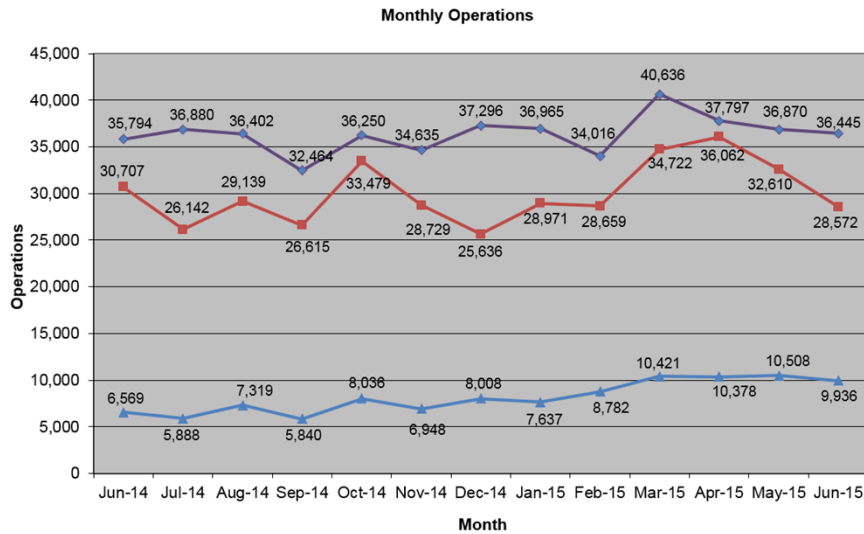


Complaints by Nature of Disturbance



Airport Operations

Aircraft operations generally fluctuate due to seasonal and passenger demand. The graphic below depicts operation totals at Phoenix Sky Harbor International Airport (PHX), Phoenix Deer Valley Airport (DVT) and Phoenix Goodyear Airport (GYR). Examples of peak travel times are spring break, major sporting events, the end of the school year and winter holidays.

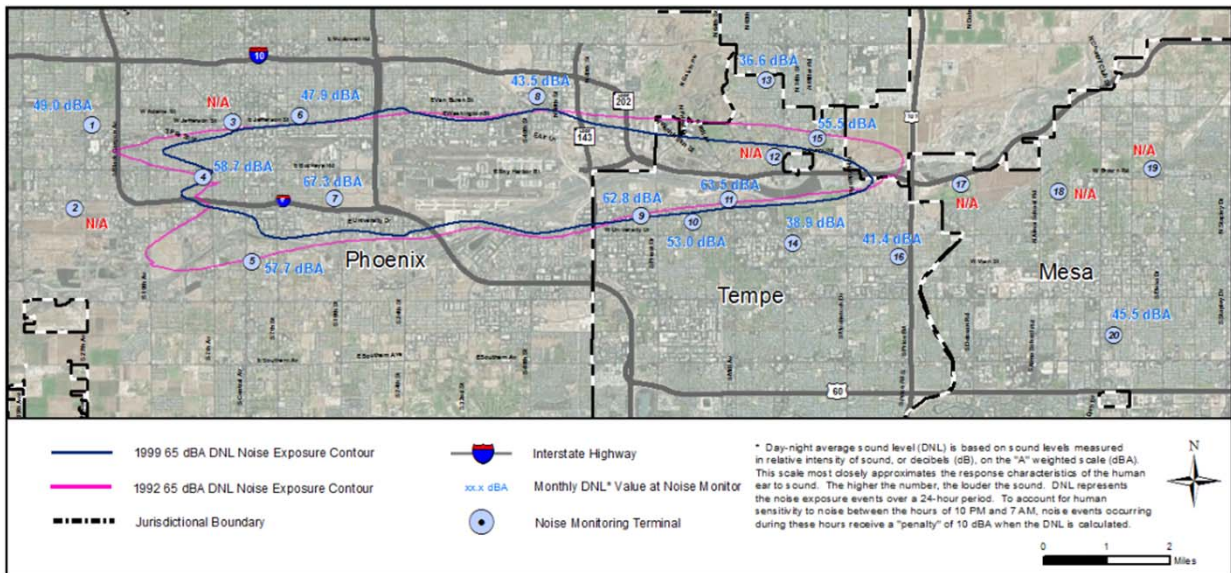


Source: FAA Tower Counts

Noise Monitoring Sites

Noise Monitors: PHX has 20 noise monitors in the communities surrounding the Airport. These are located underneath the arrival and departure paths and in areas close to the Airport’s noise contours. The monitors record aircraft noise events on a continual basis which then are correlated with actual flight data from the FAA. Noise Office staff can then associate noise complaints to aircraft operations and any noise events correlated with those flights. The Noise Office also monitors changes in monthly and annual noise readings at each location.

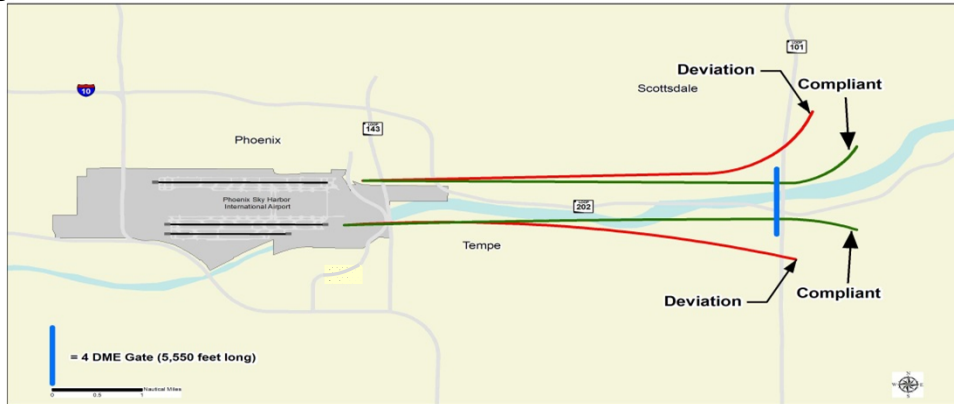
On the whole, aircraft related noise is on a decline from historical levels when older aircraft were operating at Phoenix Sky Harbor International Airport.



Note: Noise Monitoring Sites with an "N/A" may be due to maintenance being performed at or around the site which may be out of the control of the Aviation Department. The Noise Office is working to ensure all sites are operational.

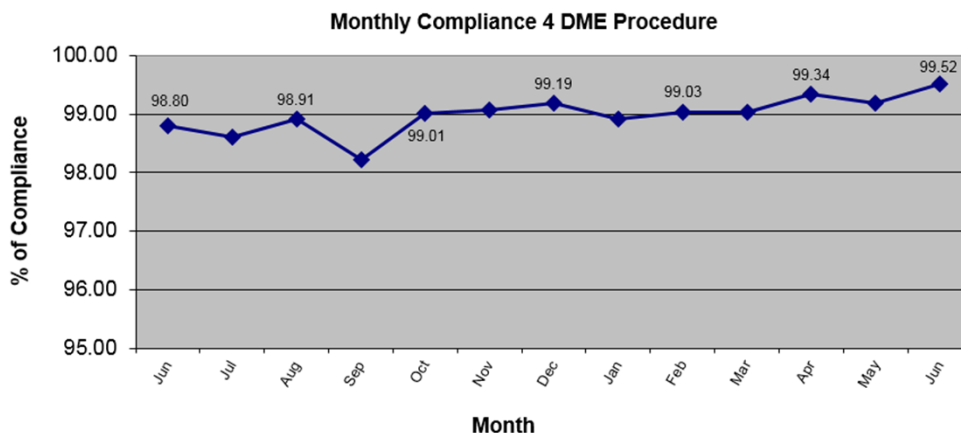
Fly Friendly Procedures

4 DME: The 4 DME (Distance Measuring Equipment) departure procedure directs jet propelled aircraft departing to the east to travel generally along the Salt River for approximately 5 miles from the airport before turning. In the event that an aircraft deviates from the 4 DME departure procedure, Noise Office staff will contact the carrier to determine the reason for the deviation and encourage future compliance.



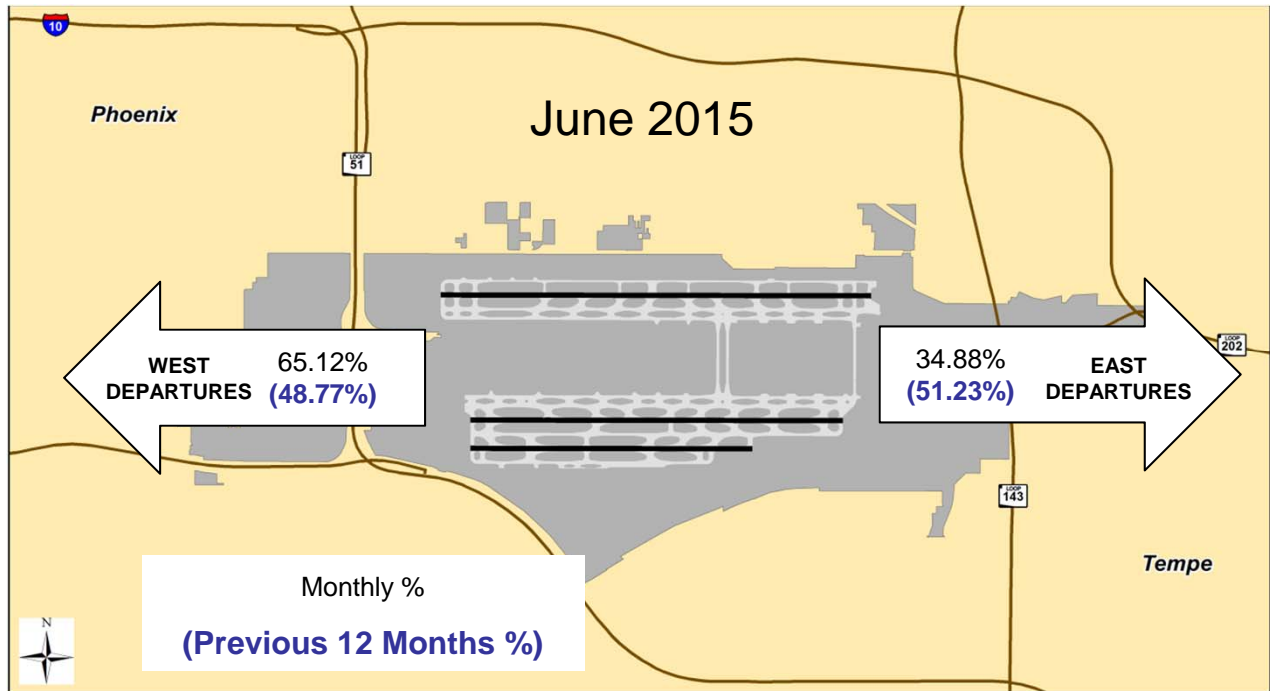
June 2015 4 DME compliance rate: 99.52%

June 2015 4 DME Deviations			
Operators with 75 or more jet flights to the east shown			
Airline Name	Deviations	Total Departures to the East	% Compliance
American Airlines	5	2,012	99.75
Southwest Airlines	8	1,671	99.52
SkyWest Airlines	2	555	99.64
Mesa Airlines	2	454	99.56
Delta Airlines	0	261	100.00
United Airlines	0	194	100.00
General Aviation	6	94	93.62
Alaska Airlines	1	76	98.68

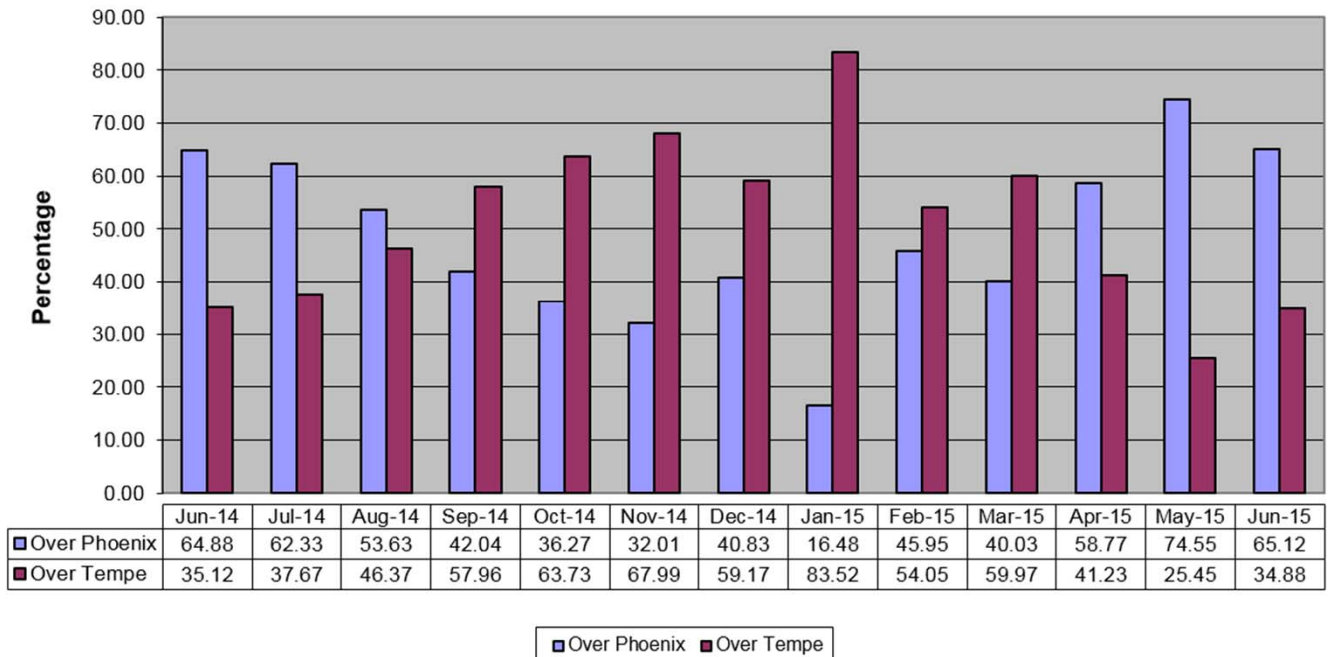


Fly Friendly Procedures Continued

Equalization: Phoenix Sky Harbor International Airport has a goal to equalize the amount of aircraft departures between the east and west over an annualized period. Monthly equalization data is shared with the FAA to help meet this goal. Because aircraft need to fly into the wind for added lift, there are times when weather can cause longer periods of flow in one direction versus the other.



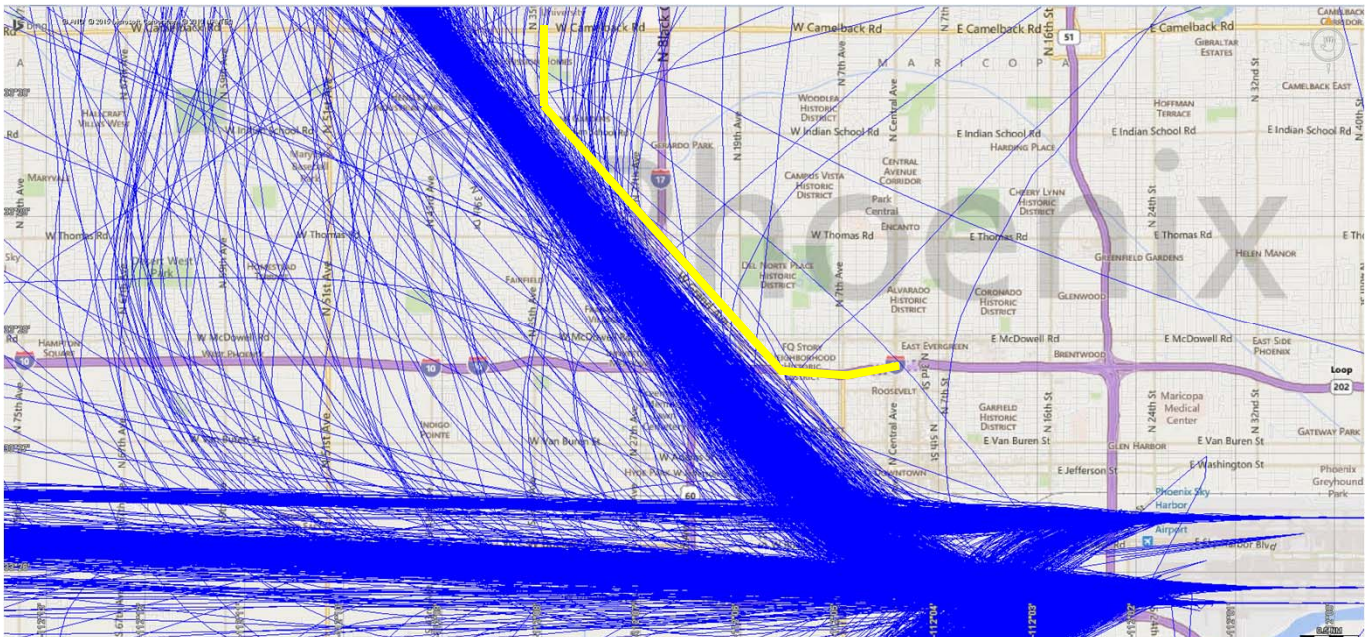
Annual Flow Equalization



“Early Turns” - Grand Avenue Month of June 2015

The graphic and table presented below was generated by the City of Phoenix’s Noise Information Office and is intended for display purposes only. The criteria used to gather and display the information is the interpretation of the Noise Office. On November 14, 2014 the FAA instructed PHX air traffic controllers to not issue early turns to aircraft unless doing so for safety purposes. The “early turns” captured below are reported to the FAA and respective airlines for analysis and corrective action as appropriate. The coordinate based “TWSND” waypoint (not depicted on map) is approximately located at the intersection of Grand Avenue and West Bethany Home Road and is a fly-by waypoint.

Map of Grand Avenue and “Early Turns”



"Early Turns" - Grand Avenue 2015	
Counts derived from subjective analysis and subject to change	
Month	Counts
January	71
February	40
March	69
April	71
May	154
June	85
July	-
August	-
September	-
October	-
November	-
December	-
Year To Date	490

“Early Turns” - Grand Avenue Month of June 2015 Continued June “Early Turns” Information Table

Operation Time	Type	Flight	Aircraft	Destination
2015-06-21 00:03:42	Commercial	AAL1720	A320	MSP
2015-06-06 14:07:38	Commercial	AAL1826	A321	LAS
2015-06-27 07:17:02	Commercial	AAL1856	A321	PHL
2015-06-29 14:32:06	Commercial	AAL1898	A321	CLT
2015-06-14 00:31:30	Commercial	AAL1931	A319	IND
2015-06-14 00:10:18	Commercial	AAL2020	A321	CLT
2015-06-20 19:10:14	Commercial	AAL2027	A320	MSP
2015-06-11 19:00:52	Commercial	AAL422	A319	OMA
2015-06-26 20:17:20	Commercial	AAL494	A321	DEN
2015-06-14 00:11:36	Commercial	AAL514	A319	CMH
2015-06-05 20:28:45	Commercial	AAL528	A319	RNO
2015-06-17 00:03:01	Commercial	AAL635	A321	ATL
2015-06-07 00:41:54	Commercial	AAL771	A321	PHL
2015-06-07 01:21:08	Commercial	AAL840	A321	CLT
2015-06-05 19:41:52	Commercial	ASA645	B739	SEA
2015-06-26 14:57:42	Commercial	CTF155	BE40	SUN
2015-06-10 11:34:34	Commercial	DAL171	MD90	MSP
2015-06-04 15:03:28	Commercial	DAL2134	MD90	MSP
2015-06-07 13:38:33	Commercial	DAL2134	MD90	MSP
2015-06-08 13:35:18	Commercial	DAL2134	MD90	MSP
2015-06-23 13:52:41	Commercial	DAL2134	MD90	MSP
2015-06-30 13:34:28	Commercial	DAL2134	MD90	MSP
2015-06-28 23:35:14	Commercial	DAL2593	B739	DTW
2015-06-14 16:24:04	Commercial	DAL899	MD90	MSP
2015-06-24 16:38:53	Commercial	DAL899	MD90	MSP
2015-06-08 16:59:24	Commercial	EJA268	F2TH	SDL
2015-06-26 08:41:31	Commercial	EJA311	C680	STS
2015-06-23 15:03:29	Commercial	EJA641	C56X	SDL
2015-06-22 11:48:43	Commercial	EJA807	C560	SDL
2015-06-25 15:11:58	Commercial	EJA897	H25B	SDL
2015-06-11 18:19:58	Commercial	EJA918	C750	YHM
2015-06-13 00:18:10	Commercial	JBU136	A320	UNK
2015-06-21 20:52:04	Privately Registered	N403DP	LJ35	ABQ
2015-06-29 09:53:07	Privately Registered	N403DP	LJ35	RST
2015-06-24 04:38:07	Privately Registered	N46MF	LJ35	ELP
2015-06-09 18:43:20	Privately Registered	N560AW	C560	STP
2015-06-26 09:50:55	Privately Registered	N610RT	C750	VNY
2015-06-11 15:10:28	Privately Registered	N75WP	C560	SJN
2015-06-25 19:53:57	Privately Registered	N989PT	C650	SDL
2015-06-02 12:04:01	Commercial	NKS116	A319	DEN
2015-06-25 12:39:46	Commercial	ROU1836	A319	YYZ
2015-06-22 09:10:38	Commercial	SKW2748	CRJ2	DRO

“Early Turns” - Grand Avenue Month of June 2015 Continued June “Early Turns” Information Table

2015-06-01 13:42:45	Commercial	SKW2759	CRJ2	FLG
2015-06-06 17:41:01	Commercial	SKW2760	CRJ2	MRY
2015-06-04 15:32:20	Commercial	SKW2764	CRJ2	GJT
2015-06-17 21:55:34	Commercial	SKW2776	CRJ2	DRO
2015-06-18 21:44:16	Commercial	SKW2776	CRJ2	DRO
2015-06-01 20:11:59	Commercial	SKW2783	CRJ2	FLG
2015-06-18 19:04:12	Commercial	SKW2792	CRJ2	GJT
2015-06-03 15:38:44	Commercial	SKW288L	CRJ9	ABQ
2015-06-28 11:55:57	Commercial	SKW4814	CRJ7	SLC
2015-06-27 06:51:13	Commercial	SWA1058	B738	MDW
2015-06-02 19:31:14	Commercial	SWA1084	B737	MDW
2015-06-22 21:04:56	Commercial	SWA114	B737	MDW
2015-06-29 15:06:03	Commercial	SWA134	B737	ATL
2015-06-16 20:09:11	Commercial	SWA1369	B737	STL
2015-06-07 16:46:49	Commercial	SWA1450	B738	PIT
2015-06-11 16:57:04	Commercial	SWA1450	B738	PIT
2015-06-22 17:13:13	Commercial	SWA1450	B738	PIT
2015-06-22 17:18:23	Commercial	SWA1728	B737	ABQ
2015-06-18 14:57:00	Commercial	SWA1875	B738	DEN
2015-06-12 13:34:44	Commercial	SWA2081	B733	LAS
2015-06-29 23:22:56	Commercial	SWA21	B737	DEN
2015-06-05 17:29:55	Commercial	SWA2614	B737	SLC
2015-06-10 11:59:37	Commercial	SWA3041	B733	DEN
2015-06-23 08:50:40	Commercial	SWA319	B737	CMH
2015-06-26 09:10:45	Commercial	SWA323	B733	SMF
2015-06-13 16:04:03	Commercial	SWA3367	B733	SMF
2015-06-05 17:38:14	Commercial	SWA3739	B738	DEN
2015-06-17 20:38:03	Commercial	SWA4118	B737	MSP
2015-06-10 14:13:34	Commercial	SWA4170	B737	DEN
2015-06-29 23:20:58	Commercial	SWA423	B737	SLC
2015-06-22 21:29:52	Commercial	SWA429	B738	ABQ
2015-06-10 06:17:33	Commercial	SWA4301	B738	DEN
2015-06-11 18:33:21	Commercial	SWA438	B737	LAS
2015-06-21 17:51:46	Commercial	SWA438	B737	LAS
2015-06-11 15:14:19	Commercial	SWA4501	B737	CMH
2015-06-19 20:22:12	Commercial	SWA661	B737	MDW
2015-06-22 19:24:32	Commercial	SWA661	B737	MDW
2015-06-26 19:42:11	Commercial	SWA661	B737	MDW
2015-06-11 07:23:37	Commercial	SWA908	B737	ABQ
2015-06-28 00:33:45	Commercial	UAL1597	B739	EWR
2015-06-20 14:15:03	Commercial	UAL2000	A319	ORD
2015-06-21 14:49:30	Commercial	UAL2000	A319	ORD
2015-06-26 07:11:43	Commercial	WJA1187	B737	YYZ

Noise Information Office
3400 E Sky Harbor Blvd Suite 3300
Phoenix, AZ 85034

Phone: 844-244-7430
Fax: 602-273-3472
Email: aircraft.noise@phoenix.gov

Special accommodations/alternate format (large print, Braille, audio tape or diskette) are available upon request. Call 602-273-4062 ADA/TTY 1-800-781-1010.