

PHX DVT GYR

 CITY OF PHOENIX AVIATION DEPARTMENT

Monthly Noise Report

February 2016

Contents

- Page 2 – Introduction/Summary
- Page 3 – Noise Complaints
- Page 4 – Airport Operation Totals & Noise Monitoring Sites
- Page 5 – Fly Friendly Procedures
- Page 7 – “Early Turns” Grand Avenue

Introduction/Summary

The City of Phoenix Aviation Department Airspace and Noise Section collects aircraft noise monitoring and flight operations data to provide the community with up-to-date information concerning aircraft noise exposure. Additionally, staff receive and address noise concerns from residents through either the noise hotline (844-244-7430) or the electronic complaint form available on the Phoenix Sky Harbor International Airport (PHX) webpage:

<https://www.skyharbor.com/FlightPaths/FileAConcernContactUs>

The following report provides a summary of the data collected for the preceding month. Each component of the report is intended to show observable trends in operation counts, flight direction, complaints, and adherence to noise abatement procedures.

Summary:

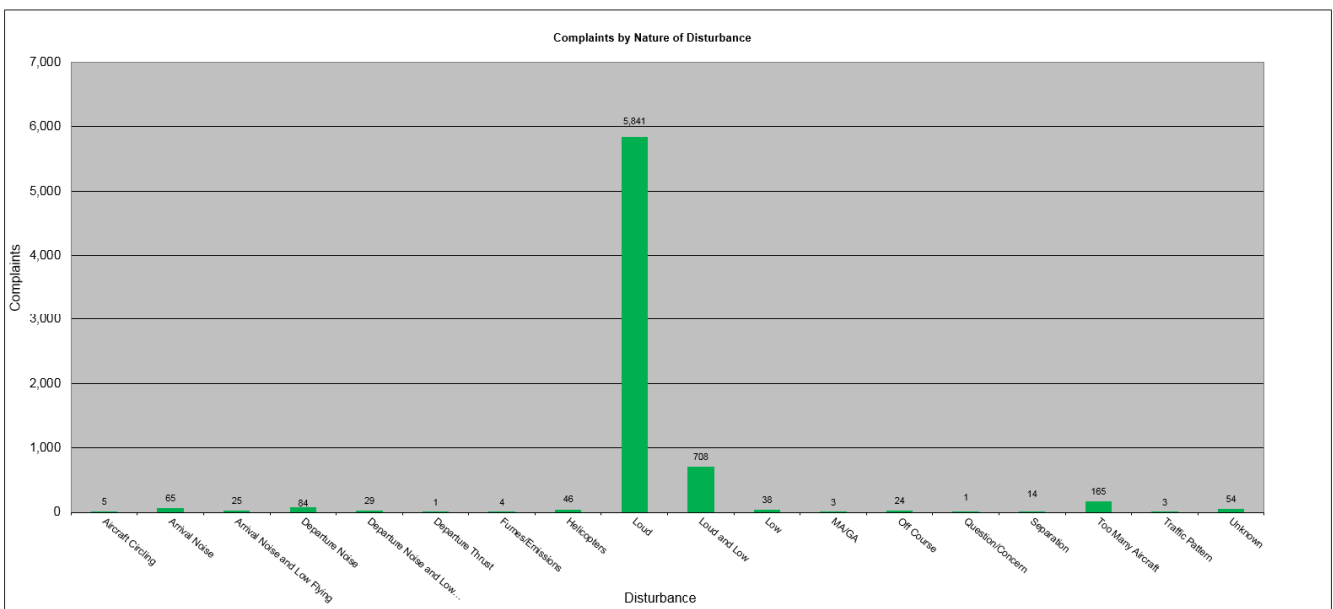
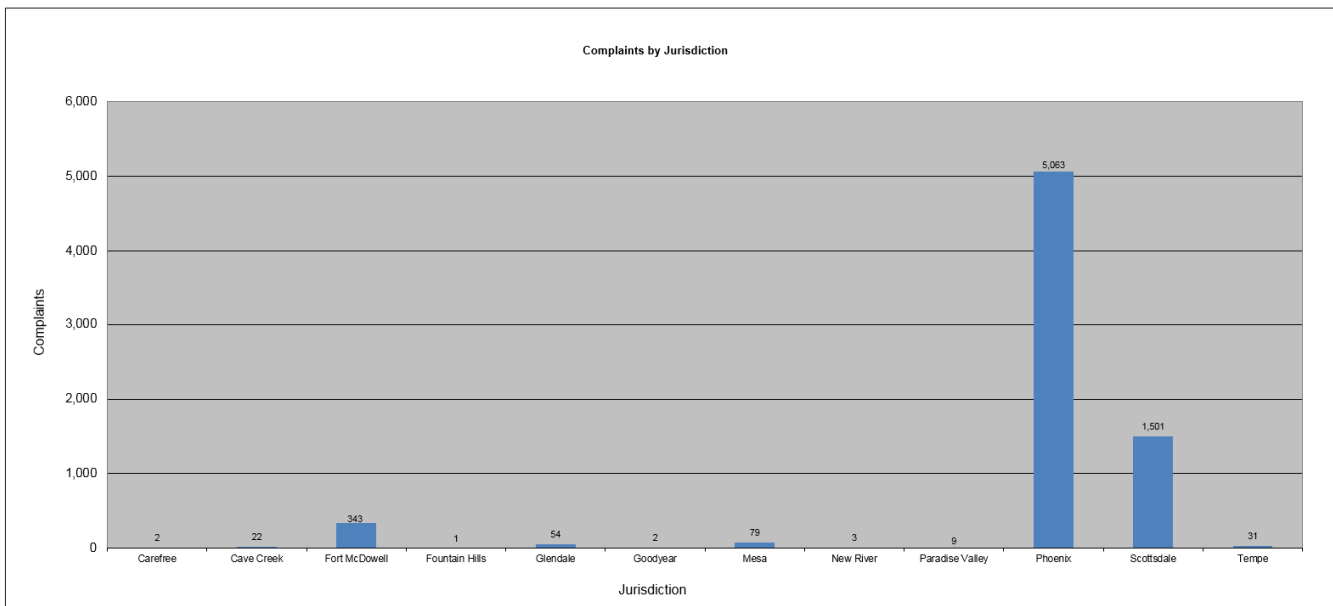
- The Airspace and Noise Section received 6,914 complaints from 202 households in the month of February 2016.
- PHX had 35,349 operations in February 2016. This is a 5.5% decrease from January 2016. Phoenix Deer Valley Airport (DVT) had 29,545 operations in February 2016. This is a 6.4% decrease from January 2016. Phoenix Goodyear Airport (GYR) had 9,969 operations in February 2016. This is a 2.3% decrease from January 2016.
- The 4 DME Compliance Rate for February 2016 was 99.39%.
- PHX operated 42.48% westerly and 57.52% easterly in the month of February 2016.

February 2016 Noise Complaints

Complaints: Many factors contribute to the amount of complaints received each month and by how many people. Complaint totals are rarely consistent due to factors ranging from one unusual flight event that generates multiple complaints from a large group of people, a bad weather day or change in the weather, or a new homeowner that did not notice the flight paths before they purchased their home.

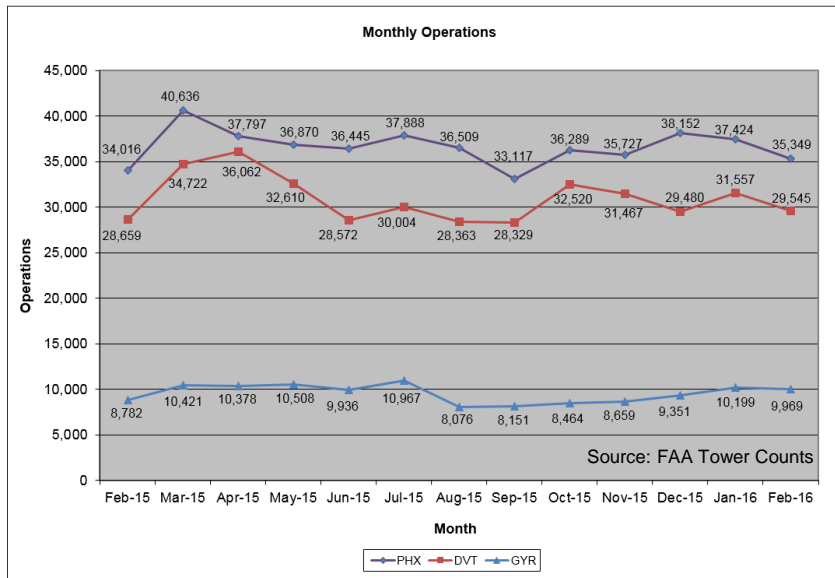
Complaint Statistics

	Feb-15			Feb-16	
	Households	Complaints		Households	Complaints
PHX- Sky Harbor	262	1,268		186	6,855
DVT- Deer Valley	9	9		15	57
GYR- Goodyear	0	0		1	2
Totals	271	1,277		202	6,914



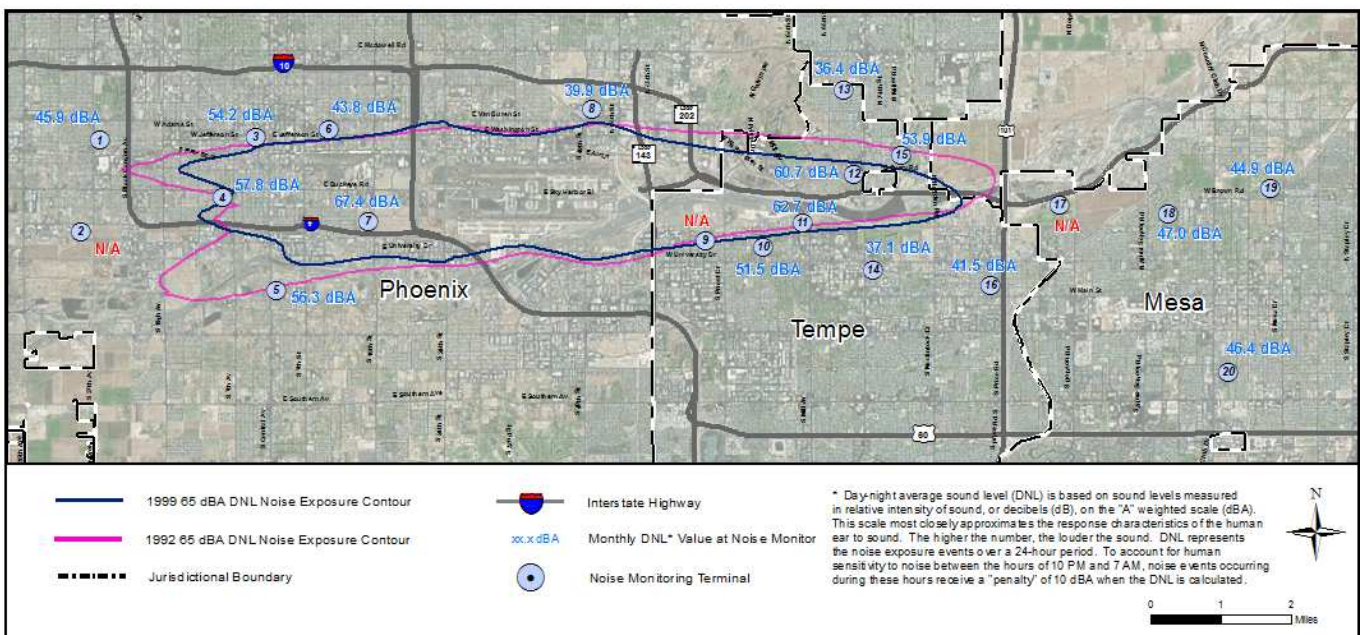
Airport Operations

Aircraft operations generally fluctuate due to seasonal and passenger demand. The graphic below depicts operation totals at Phoenix Sky Harbor International Airport (PHX), Phoenix Deer Valley Airport (DVT) and Phoenix Goodyear Airport (GYR). Examples of peak travel times are spring break, major sporting events, the end of the school year and winter holidays.



Noise Monitoring Sites

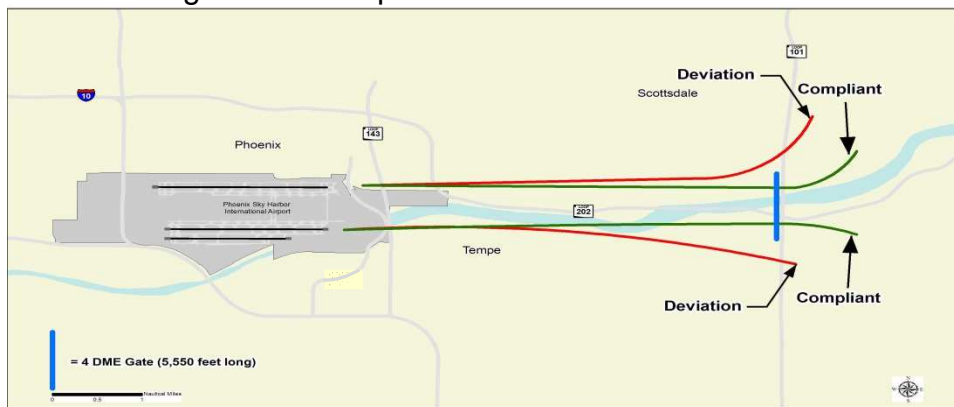
Noise Monitors: PHX has 20 noise monitors in the communities surrounding the Airport. These are located underneath the arrival and departure paths and in areas close to the Airport’s noise contours. The monitors record aircraft noise events on a continual basis which then are compared with actual flight data from the FAA. Staff can then tie noise complaints to aircraft operations and any noise events correlated with those flights. Staff also monitors changes in monthly and annual noise readings at each location.



Note: Noise Monitoring Sites with an "N/A" did not provide usable data for the preceding month due to maintenance or operational testing, or non-aircraft noise events around the site.

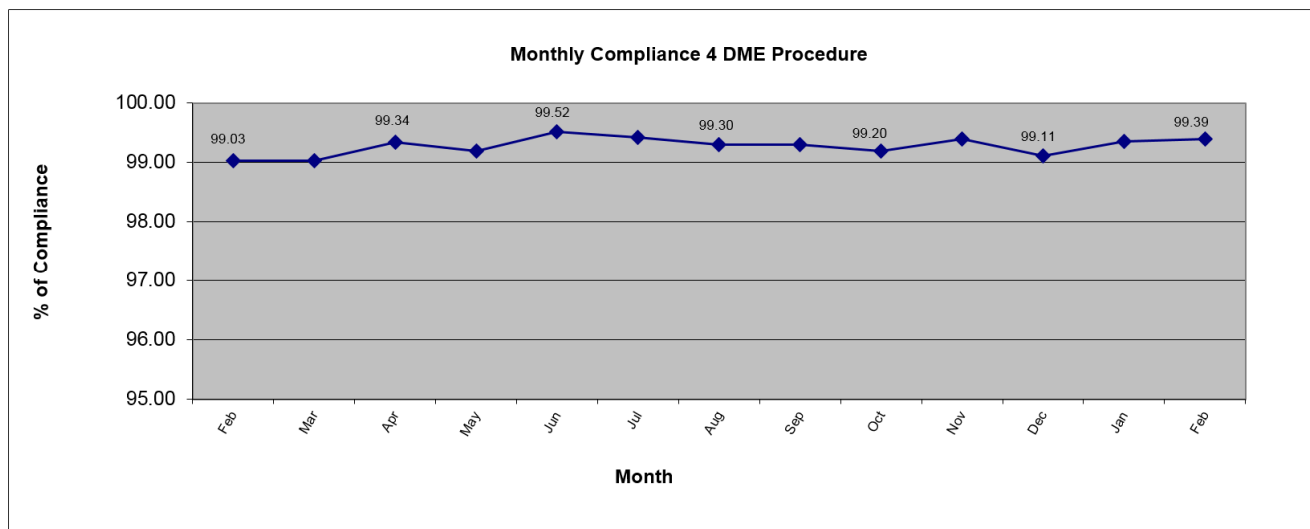
Fly Friendly Procedures

4 DME: The 4 DME (Distance Measuring Equipment) departure procedure directs jet aircraft departing to the east to travel generally along the Salt River for approximately 5 miles from the airport before turning. In the event that an aircraft deviates from the 4 DME departure procedure, Airspace and Noise Section staff will contact the carrier to determine the reason for the deviation and encourage future compliance.



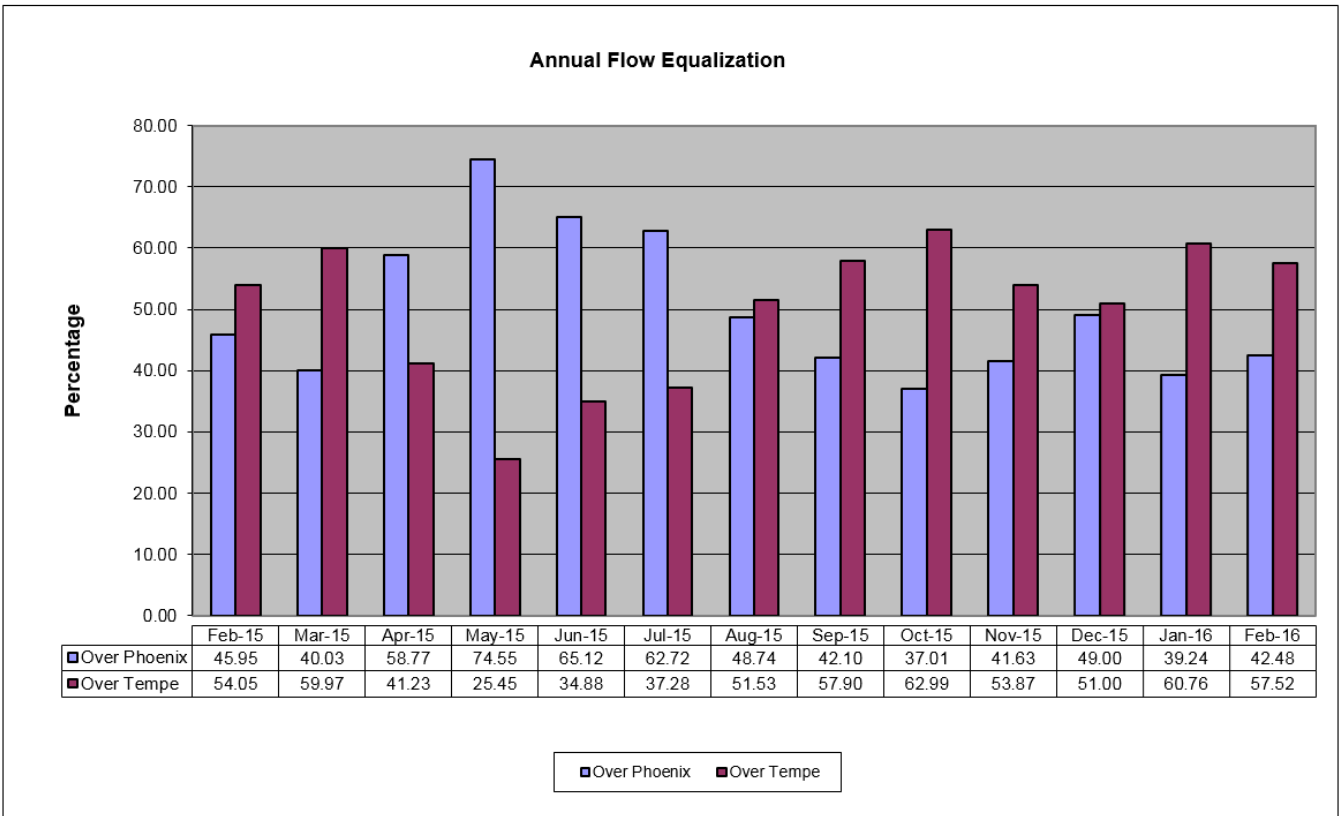
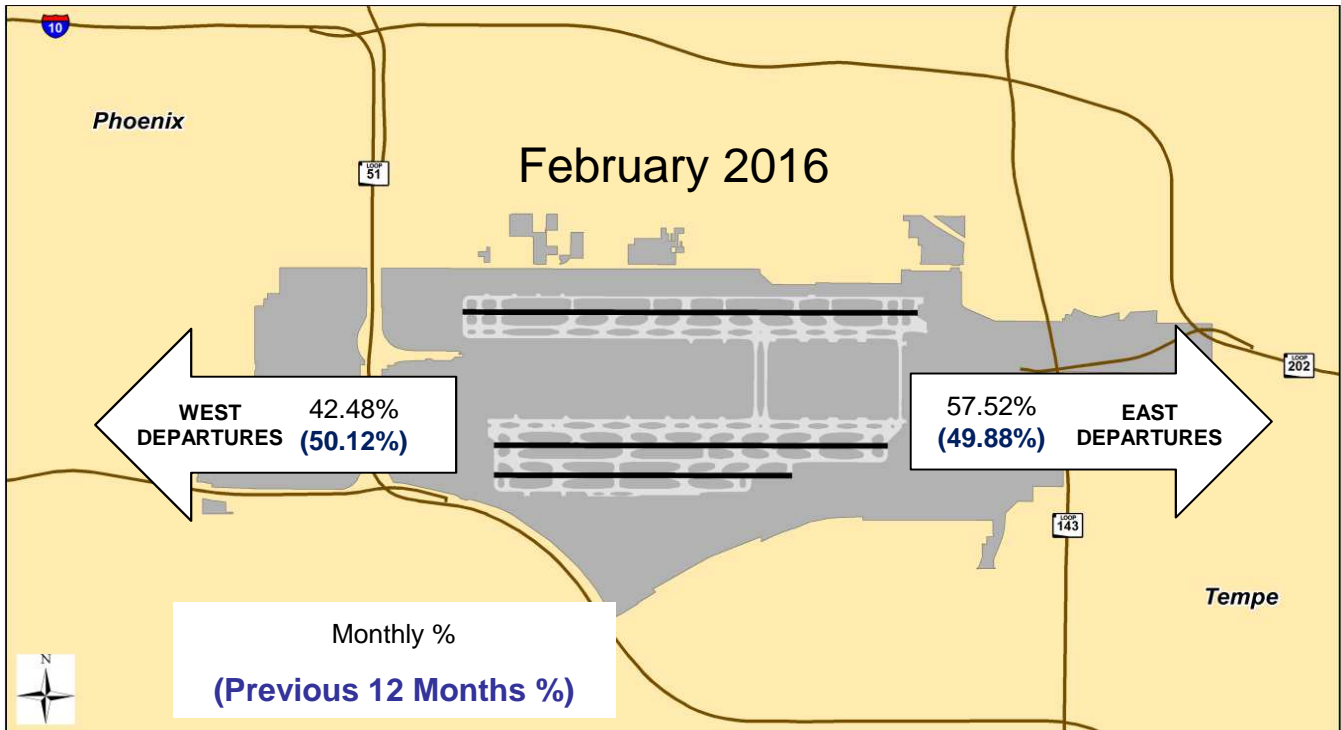
February 2016 4DME compliance rate: 99.39%

February 2016 4 DME Deviations			
Operators with 75 or more jet flights to the east shown			
Airline Name	Deviations	Total Departures to the East	% Compliance
American Airlines	3	2,970	99.90
Southwest Airlines	15	2,532	99.41
Mesa Airlines	1	875	99.89
SkyWest Airlines	1	621	99.84
United Airlines	1	446	99.78
Delta Airlines	0	434	100.00
General Aviation	14	216	93.52
Alaska Airlines	3	110	97.27
FedEx Airlines	0	104	100.00
WestJet Airlines	0	98	100.00
Frontier Airlines	2	78	97.44



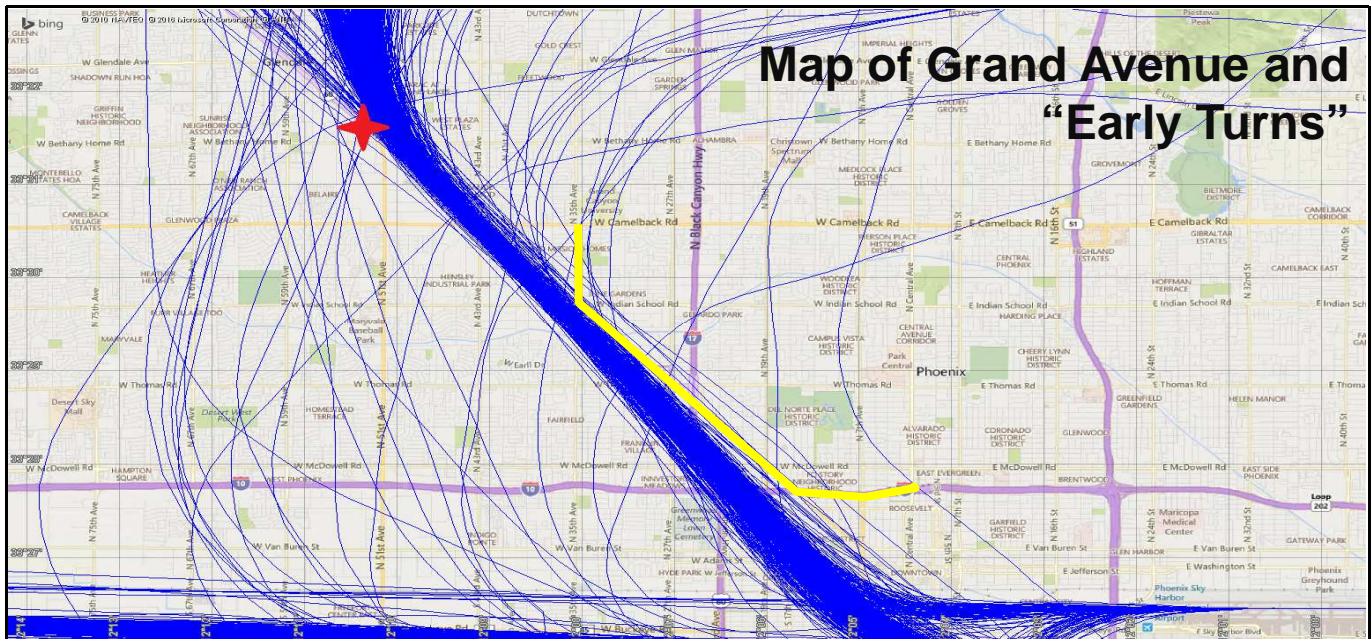
Fly Friendly Procedures Continued

Equalization: Phoenix Sky Harbor International Airport has a goal to equalize the amount of aircraft departures between the east and west over an annualized period. Because aircraft need to fly into the wind for added lift, there are times when weather can cause longer periods of flow in one direction versus the other.



“Early Turns” - Grand Avenue Month of February 2016

While a formal turning “gate” does not exist for RNAV northwest departures, the City has informally established a gate for monitoring purposes; generally depicted by the yellow line on the map below. Staff monitors the amount of jet aircraft that turn back to due north or east before going past the informal gate and publishes that data so that the community has a sense of aircraft flight paths that deviate from the RNAV corridor; which is consistent with the November 14, 2014 FAA instruction to PHX air traffic controllers to not issue early turns to aircraft unless doing so for safety purposes. Staff continues to work with the FAA on defining Northwest route “early turn” criteria so it is representative of FAA and reflective of community issues.



"Early Turns" - Grand Avenue 2016	
Counts derived from subjective analysis and subject to change	
Month	Counts
January	69
February	21
March	
April	
May	
June	
July	
August	
September	
October	
November	
December	
Year To Date	90

**“Early Turns” - Grand Avenue
Month of February 2016 Continued
February 1-29 “Early Turns” FAA Info Table**

#	Operation Time	Type	Flight	AC Type	RWY	Destination	FAA Information
1	2016-02-21 00:32:55	Commercial	AAL2020	A321	25R	CLT	Not Available
2	2016-02-28 00:11:15	Commercial	AAL420	A319	25R	CLE	Not Available
3	2016-02-15 21:50:22	Commercial	AAL529	A319	25L	SJO	Not Available
4	2016-02-20 16:27:18	Commercial	AAL562	A319	25R	BOS	Not Available
5	2016-02-20 14:07:35	Commercial	AAL680	A321	25R	DCA	Not Available
6	2016-02-19 22:02:15	Commercial	AJ19258	DC91	25L	BFI	Not Available
7	2016-02-01 22:50:14	Commercial	ASH5616	CRJ9	26	ABQ	Not Available
8	2016-02-11 15:37:07	Commercial	DAL518	A320	25R	DTW	Not Available
9	2016-02-23 00:48:06	Commercial	JBU602	A320	25R	BOS	Not Available
10	2016-02-21 15:56:34	Commercial	JTN613	A320	25L	PSM	Not Available
11	2016-02-28 20:39:56	Commercial	SCX608	B738	25R	MSP	Not Available
12	2016-02-02 19:10:13	Commercial	SWA1910	B738	25R	MDW	Not Available
13	2016-02-21 18:26:21	Commercial	SWA2556	B733	25R	ABQ	Not Available
14	2016-02-01 21:42:10	Commercial	SWA2776	B737	25R	ABQ	Not Available
15	2016-02-02 18:12:45	Commercial	SWA2974	B733	25R	ABQ	Not Available
16	2016-02-29 14:08:49	Commercial	SWA591	B733	25R	ABQ	Not Available
17	2016-02-19 14:09:27	Commercial	SWA9007	B733	25R	ABQ	Not Available
18	2016-02-11 15:22:34	Commercial	UAL1225	B738	25R	ORD	Not Available
19	2016-02-28 23:41:47	Commercial	UAL1976	B739	25R	EWR	Not Available
20	2016-02-21 00:41:01	Commercial	UAL797	B739	25R	ORD	Not Available
21	2016-02-29 21:22:37	Commercial	UPS857	B763	25R	SDF	Not Available