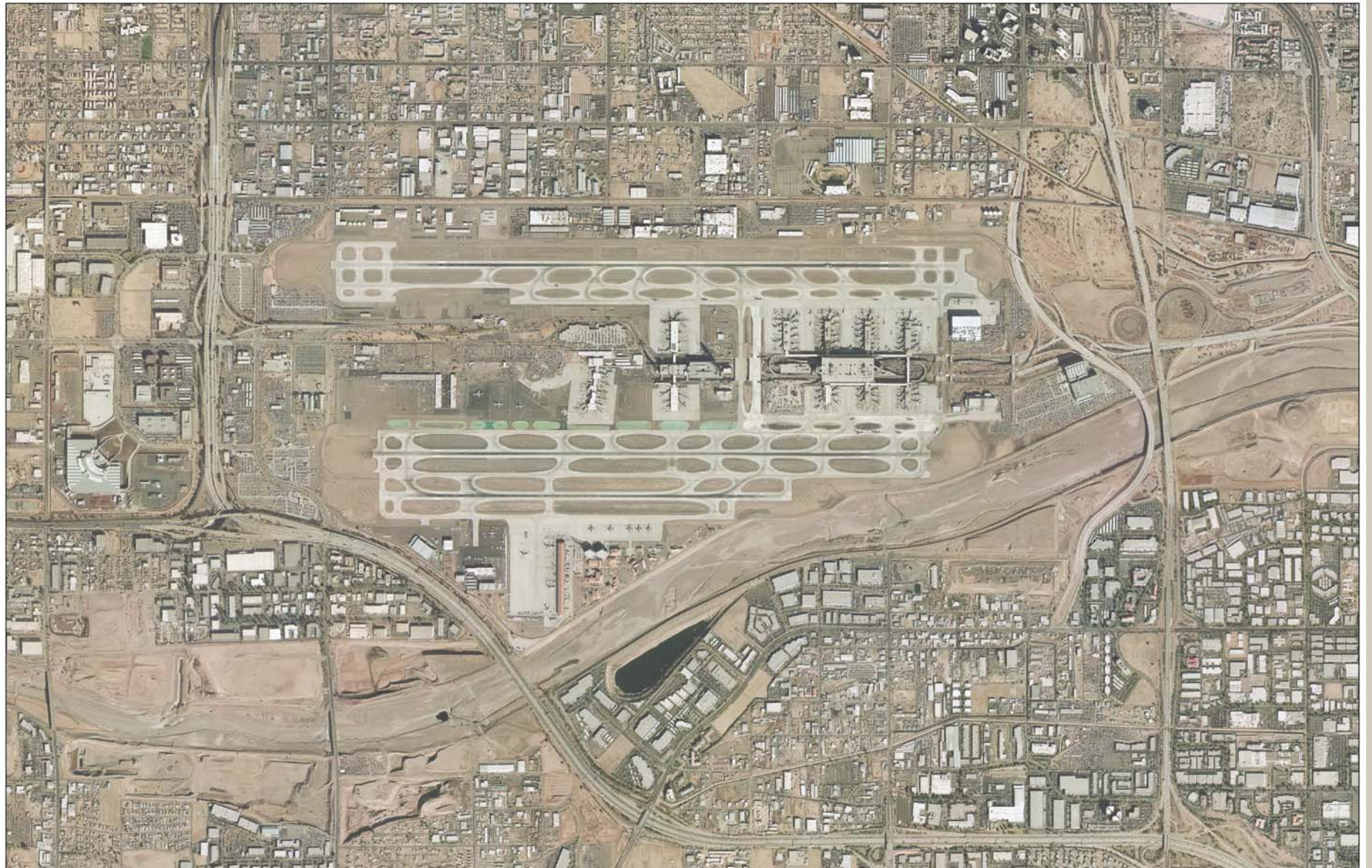
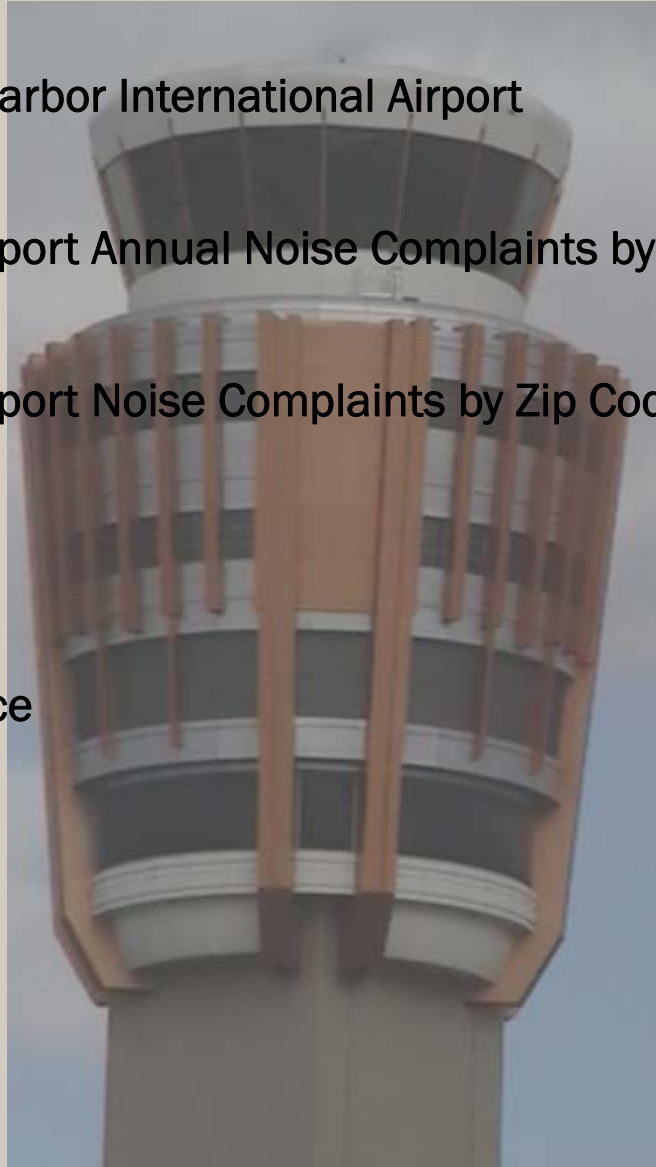


Aviation Noise Report - 2005 Year End Review



Aircraft Operations at Sky Harbor International Airport	Page 3
Sky Harbor International Airport Annual Noise Complaints by City	Page 4
Sky Harbor International Airport Noise Complaints by Zip Code	Page 5
Annual Runway Utilization	Page 6
4DME Departure Compliance	Page 7
Noise Monitoring Results	Page 8
General Aviation Airports	Page 9



Aircraft Operations at Sky Harbor International Airport

Jet Propelled Aircraft

Jet aircraft that are operating in the United States continue to change. At Sky Harbor International Airport this can be seen in the decrease in operations of older aircraft such as the 73Q (Hush-Kitted 737s) and MD80s being replaced by more modern aircraft such as the CARJ. These aircraft are able to accommodate similar passenger loads and cover the same flight distances but are quieter and more fuel efficient than the older aircraft that they are replacing.

[Aircraft Designators (Equipment) can be identified by their common names at: <http://ntl.bts.gov/lib/5000/5300/5385/916.PDF>]

Equipment	2001	2002	2003	2004	2005
A306	1240	1594	1,158	1,056	1,971
A310	36	23	46	51	25
A318	0	1	29	371	293
A319	26,294	27,975	32,958	31,773	37,016
A320	43,771	45,257	50,026	63,903	74,640
A321	809	1,434	510	1,951	1,471
A332	0	0	0	0	0
A340	7	383	358	26	0
ASTR	78	181	260	256	326
AV8	2	18	12	41	32
B707	2	3	0	0	3
B712	12	0	0	0	2
B720	155	91	14	41	43
B72Q	9,561	4,313	3,898	4,429	3,048
B737	192,190	166,611	188,574	184,204	191,060
B73Q	22,105	15,118	14,707	8,041	121
B744	413	46	57	488	630
B757	27,429	22,192	25,360	26,293	24,340
B762	4,409	4,621	4,072	3,923	3,584
B772	506	616	700	172	19
BE40	612	624	930	1,048	1,070
C135	9	16	23	12	3
C141	89	86	73	9	0
C25A	0	5	0	76	105
C500	167	75	94	40	49
C501	152	99	86	61	114
C525	275	349	516	554	549

Equipment	2001	2002	2003	2004	2005
C526	0	6	104	175	10
C550	768	898	1,048	966	1,101
C551	56	27	23	13	14
C560	874	895	2,058	1,487	1,718
C56X	0	284	0	949	1,353
C650	864	491	479	405	456
C680	0	0	0	6	36
C750	374	555	656	933	1,147
CARJ	27	36,254	66,943	74,437	84,054
CL60	0	365	627	874	1,119
DA20	23	31	13	11	25
DC10	1,720	644	43	28	306
DC8	137	0	217	16	0
DC8Q	41	11	20	15	288
DC9	67	45	58	85	808
DC9Q	884	755	869	862	76
E135	0	4,493	178	427	604
E145	1	173	48	17	7
F100	6	11	0	0	0
F2TH	0	311	437	609	760
F900	262	232	329	286	305
FA10	90	90	100	71	81
FA20	366	297	320	264	239
FA50	403	434	419	239	251
GALX	0	57	100	208	385
GLF2	183	127	175	179	187
GLF3	259	199	158	104	167

Equipment	2001	2002	2003	2004	2005
GLF3	259	199	158	104	167
GLF4	557	498	614	722	750
GLF5	114	116	120	163	203
H25A	133	128	181	91	57
H25B	817	916	1,120	1,266	1,248
H25C	104	109	107	105	76
KC35	726	871	1,353	1,118	1,143
L101	22	5	24	3	6
LJ23	3	2	4	1	0
LJ24	97	75	142	112	98
LJ25	343	164	326	354	272
LJ28	19	7	3	6	4
LJ29	73	50	77	59	36
LJ31	171	268	372	351	355
LJ35	2,632	2,534	2,745	3,104	2,743
LJ36	0	7	12	0	0
LJ45	0	145	305	417	595
LJ55	234	131	126	165	155
LJ60	476	449	517	543	666
MD11	21	23	54	18	21
MD80	19,667	19,355	19,171	12,778	12,907
MD90	15	13	6	2	550
MU30	204	283	190	147	116
SBR1	111	123	92	94	46
WW23	7	8	2	2	0
WW24	374	244	198	174	190
Totals	364,740	366,052	427,906	434,825	458,816

Notes: *These totals reflect only aircraft propelled by jet engines with significant operations at Sky Harbor Airport.

Cells which are highlighted in aqua highlight a significant change in operations by a particular aircraft.

Annual Operations

Year	Jan.	Feb.	Mar.	Apr.	May	Jun.	Jul.	Aug.	Sept.	Oct.	Nov.	Dec.	Total
2005	46,062	42,748	48,686	47,144	48,584	46,889	47,449	48,125	45,829	47,573	46,845	47,602	563,536
2004	49,797	48,627	50,607	50,269	50,555	49,105	50,141	50,409	48,654	46,218	45,043	47,110	586,535
2003	50,622	45,302	50,879	49,716	50,156	48,350	49,674	50,025	47,845	50,989	47,741	49,793	591,092
2002	47,495	44,131	50,601	49,430	50,637	49,012	49,359	50,886	47,832	51,335	49,486	50,125	590,329
2001	54,254	50,172	56,832	53,457	54,331	51,905	52,761	53,556	40,961	47,739	44,986	45,712	606,666
Avg.	49,646	46,196	51,521	50,003	50,853	49,052	49,877	50,600	46,224	48,771	46,820	48,068	



Sky Harbor International Airport Annual Noise Complaints by City

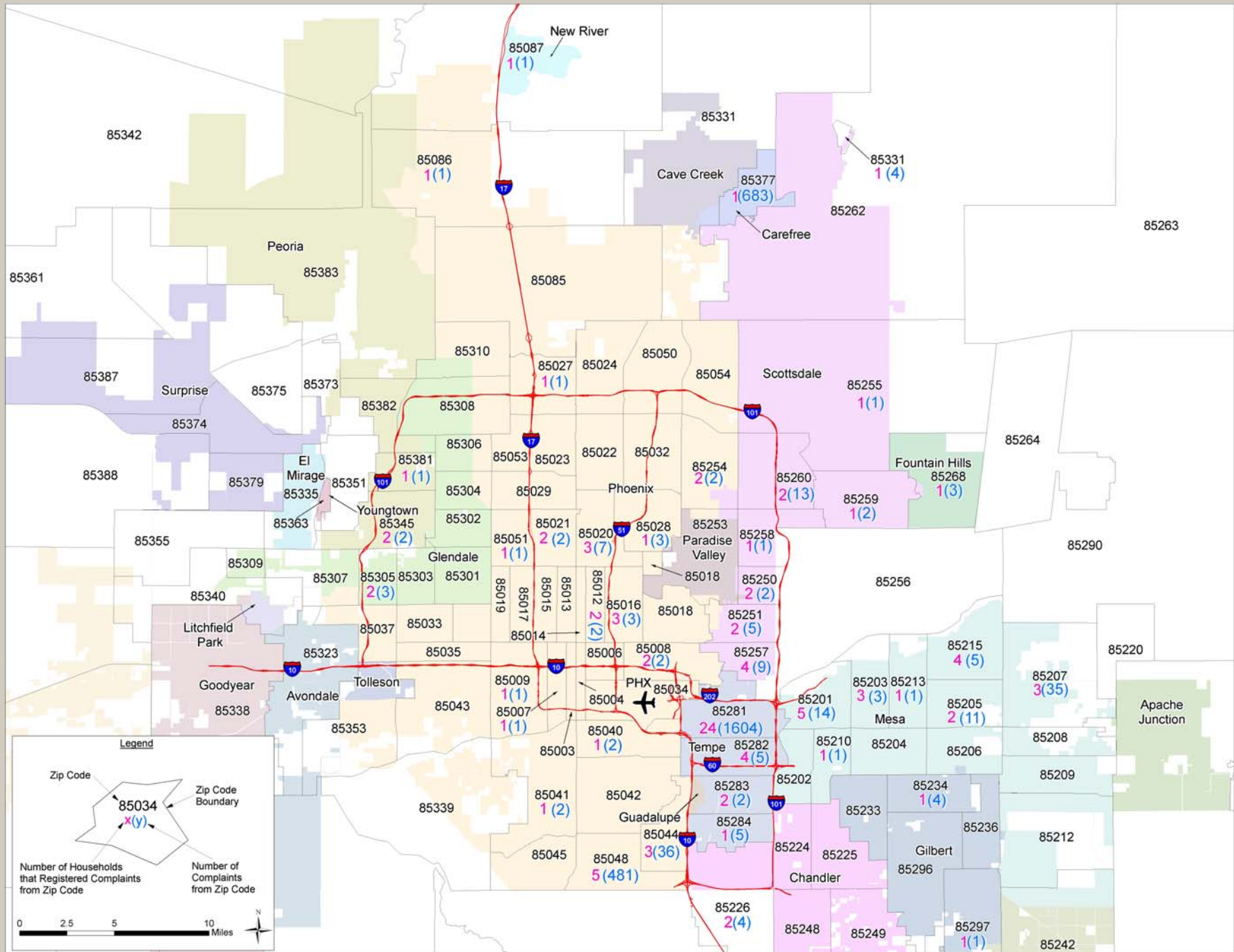
City	2005		2004		2003		2002		2001	
	Households	Complaints	Households	Complaints	Households	Complaints	Households	Complaints	Households	Complaints
Anthem	1	1	0	0	0	0	0	0	0	0
Apache Junction	0	0	2	2	0	0	1	4	2	2
Carefree	1	683	1	2,026	5	1,671	24	3,879	3	5
Cave Creek	0	0	1	3	6	1,208	31	1,832	7	8
Chandler	2	4	2	2	4	8	1	1	14	16
Fountain Hills	1	3	3	3	4	12	12	59	40	76
Gilbert	3	6	6	18	4	11	4	6	8	14
Glendale	2	3	1	1	1	1	1	1	11	11
Laveen	0	0	0	0	0	0	0	0	1	1
Maricopa County	0	0	2	10	6	38	9	28	1	3
Mesa	19	70	14	58	9	66	36	91	47	123
New River	1	1	1	2	1	10	2	4	4	6
Paradise Valley	2	2	1	3	3	3	8	18	4	4
Peoria	0	0	0	0	1	2	2	2	1	1
Phoenix	29	549	27	1,327	52	3,207	79	5,152	237	20,422
Queen Creek	0	0	0	0	1	1	0	0	0	0
Rio Verde	0	0	1	1	2	2	5	5	1	2
Scottsdale	14	34	16	73	29	3,806	77	847	98	399
Sun City West	0	0	0	0	1	2	0	0	0	0
Sun Lakes	0	0	0	0	0	0	0	0	2	2
Surprise	0	0	0	0	1	1	0	0	1	2
Tempe	31	1,115	20	1,029	36	1,066	66	571	176	913
Unknown	0	0	1	1	0	0	3	12	12	24
Totals:	106	2,972	99	4,559	166	10,155	361	12,512	670	22,034

Notes:

*1 Household made 442 Complaints from Phoenix; 1 Household made 1115 Complaints from Tempe; 1 Household made 683 Complaints from Carefree



Sky Harbor International Airport Noise Complaints by Zip Code



Runway Utilization January- December 2005

Departures		Easterly Departures (Over Tempe)				Westerly Departures (Over Phoenix)			
		8	7L	7R	Total 8,7L,7R	26	25L	25R	Total 26,25L,25R
		Daytime (07:00:00-21:59:59)	Daytime Departures	8195	94065	7499	109759	15891	8819
	% of Daytime Departures	7.47%	85.70%	6.83%	100.00%	12.12%	6.73%	81.15%	100.00%
Nighttime (22:00:00-06:59:59)	Nighttime Departures	3725	9141	3620	16486	4233	1568	3890	9691
	% on Nighttime Departures	22.59%	55.45%	21.96%	100.00%	43.68%	16.18%	40.14%	100.00%
All Hours	Total Departures	11920	103206	11119	126245	20124	10387	110257	140768
	% of Total Departures	9.44%	81.75%	8.81%	100.00%	14.30%	7.38%	78.33%	100.00%
	% of Total Directional Operations	47.28				52.72			



Arrivals		Easterly Arrivals (Over Phoenix)				Westerly Arrivals (Over Tempe)			
		8	7L	7R	Total 8,7L,7R	26	25L	25R	Total 26,25L,25R
		Daytime (07:00:00-21:59:59)	Daytime Arrivals	59,018	6,691	37,921	103,630	73,506	45,825
	% of Daytime Arrivals	56.95%	6.46%	36.59%	100.00%	53.12%	33.11%	13.77%	100.00%
Nighttime (22:00:00-06:59:59)	Nighttime Arrivals	4,601	4,473	2,686	11,760	3,673	2,233	6,784	12,690
	% on Nighttime Arrivals	39.12%	38.04%	22.84%	100.00%	28.94%	17.60%	53.46%	100.00%
All Hours	Total Arrivals	63,619	11,164	40,607	115,390	77,179	48,058	25,839	151,076
	% of Total Arrivals	55.13%	9.68%	35.19%	100.00%	51.09%	31.81%	17.10%	100.00%
	% of Total Directional Operations	43.30				56.70			

Per a 1994 Intergovernmental Agreement between the cities of Phoenix and Tempe, the City of Phoenix encourages the FAA to distribute departure traffic equally over Phoenix and Tempe, weather and traffic permitting. This measurement is based on a 12-month period.

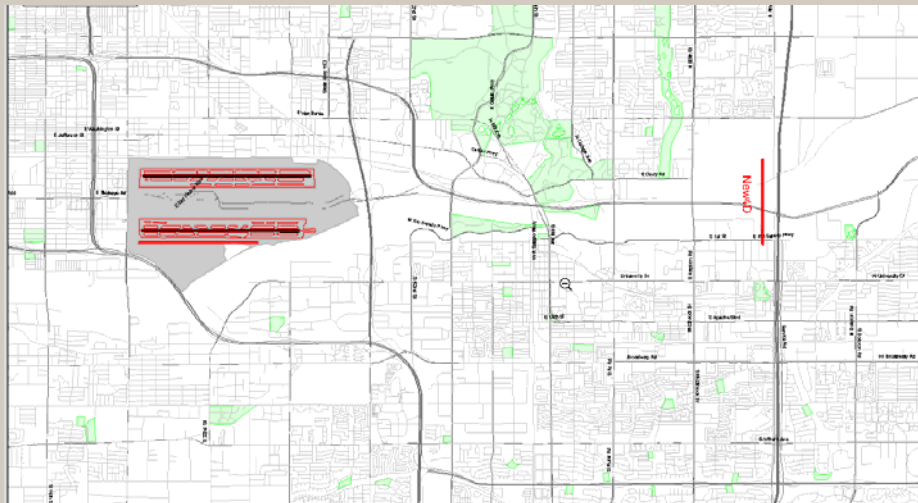


4DME Departure Compliance

Since the early 1980's, the City of Phoenix has taken measures to reduce the exposure of airport-area residents from aircraft noise. One such measure was the development and implementation of the 4-DME noise abatement departure procedure. Established in 1984 and formalized in 1994 through an Intergovernmental Agreement (IGA) between the cities of Phoenix and Tempe, the route directs jets departing to the east to travel approximately 5 miles from the airport (4-DME) before turning on any assigned heading. The IGA also requires the City of Phoenix to monitor procedure compliance. This is done through the creation of a gate located at the 4 DME turning point. The gate measures 5,550 feet long and runs 1,000 feet north of the north runway (RWY 8/26) to 1,000 feet south of the center runway (RWY 7L/25R).

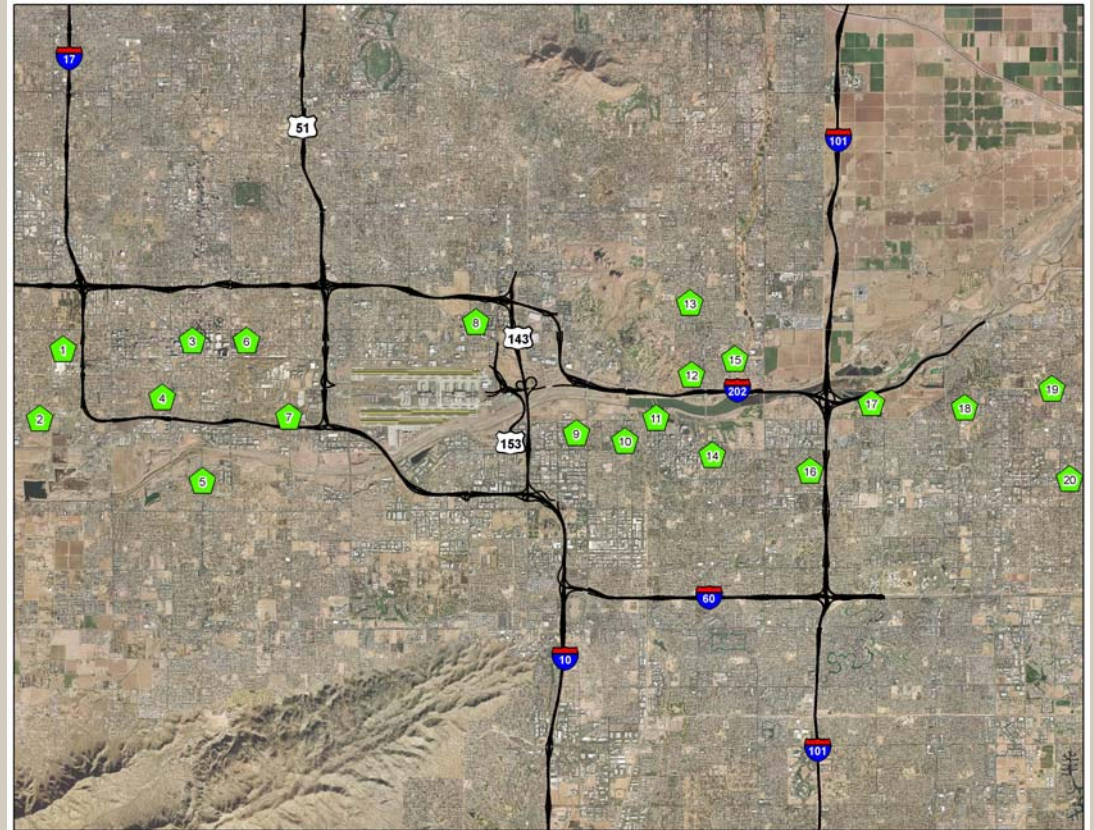
Aircarrier Code	Aircarrier Name	Deviations	Total Departures to the East	%Compliance
AAL	American Airlines	144	2,660	94.59
AAY	Allegiant Air Inc.	0	5	100.00
ABX	Airborne Express, Inc.	55	372	85.22
ACA	Air Canada	3	141	97.87
AJM	Air Jamaica	0	1	100.00
AMF	Ameriflight	1	7	85.71
AMT	American Trans Air, Inc.	9	531	98.31
AMX	Aeromexico	24	174	86.21
ASA	Alaska Airlines, Inc.	83	1,782	95.34
ASH	US Airways	538	16,260	96.69
AWE		474	22,013	97.85
USA		10	1,642	99.39
ATN	Air Transport International	0	3	100.00
BAW	British Airways	0	50	100.00
BSK	Miami Air International	0	13	100.00
CAA	Civil Aviation Authority	44	398	88.94
CCI	Capital Cargo International Airlines	4	29	86.21
CCP	Champion Air	7	48	85.42
COA	Continental Airlines	29	2,327	98.75
CTT	Custom Air Transport	3	6	50.00
CXP	XTRA Airways	0	11	100.00
DAL	Delta Airlines	19	2,183	99.13
DHL	DHL Air Cargo	44	238	81.51
EIA	Evergreen International Airlines	0	2	100.00

Aircarrier Code	Aircarrier Name	Deviations	Total Departures to the East	%Compliance
EJA	Netjets Aviation Inc.	94	493	80.93
EJM	Executive Jet Management	0	1	100.00
FDX	Federal Express	95	566	83.22
FFT	Frontier Airlines, Inc.	16	1,088	98.53
GA	General Aviation	395	4,107	90.38
HAL	Hawaiian Airlines	3	272	98.90
JBU	Jetblue Airways	14	113	87.61
KHA	Kitty Hawk Air Cargo	10	131	92.37
MEP	Midwest Airlines, Inc.	5	340	98.53
MPH	Martinair	0	2	100.00
MXA	Mexicana	0	1	100.00
NWA	Northwest Orient Airlines, Inc.	44	2,176	97.98
OPT	Flight Options	67	307	78.18
ROK	National Airlines Inc.	0	4	100.00
SCX	Sun Country Airlines	6	220	97.27
SKW	Sky West Aviation, Inc.	126	1,943	93.52
SWA	Southwest Airlines Co.	1,075	30,515	96.48
TAG	Tag Aviation USA, Inc.	0	7	100.00
UAL	United Air Lines, Inc.	87	3,552	97.55
UPS	United Parcel Service	124	695	82.16
USC	US Check Airlines	142	426	66.67
WJA	Westjet Airlines, LLC	0	38	100.00
Totals		3,794	97,893	96.12



Noise monitoring sites (NMS) 1-8 are located in Phoenix, 9-16 in Tempe, and 17-20 in Mesa.

Noise Monitoring Site	2005 Annual DNL	2004 Annual DNL	2003 Annual DNL	2002 Annual DNL	2001 Annual DNL
NMS1	58.9	57.1	56.7	54.6	56.4
NMS2	61.9	59.7	58.8	59.7	61.2
NMS3	62.0	59.3	59.8	58.2	57.4
NMS4	61.6	61.8	61.9	61.3	63.4
NMS5	59.6	59.2	59.5	59.1	60.9
NMS6	56.4	54.1	57.7	54.8	54.6
NMS7	69.5	70.5	69.6	69.7	72.3
NMS8	56.9	54.2	56.2	55.7	54.2
NMS9	66.2	66.9	65.0	65.8	68.2
NMS10	63.3	62.7	61.7	62.4	64.9
NMS11	67.5	66.6	65.5	66.1	68.5
NMS12	65.0	64.1	64.7	64.7	65.8
NMS13	55.1	51.0	48.8	50.4	49.3
NMS14	60.0	55.7	55.9	57.2	59.4
NMS15	61.4	60.2	61.0	59.7	61.1
NMS16	56.8	53.6	50.8	52.2	52.5
NMS17	61.7	60.3	58.8	59.9	62.2
NMS18	59.3	58.0	57.1	57.1	58.7
NMS19	55.6	52.4	52.7	52.4	52.8
NMS20	56.0	52.5	49.5	50.0	49.7



Day-night average sound level (DNL) means the 24-hour average sound level, in decibels, for the period from midnight to midnight, obtained after the addition of ten decibels to sound levels for the periods between midnight and 7 a.m., and between 10 p.m., and midnight, local time. The symbol for DNL is Ldn.



Annual Operations

Deer Valley Airport (DVT)

Year	Jan.	Feb.	Mar.	Apr.	May	Jun.	Jul.	Aug.	Sept.	Oct.	Nov.	Dec.	Total
2005	29,862	29,344	32,480	28,661	30,991	30,925	28,640	33,516	32,255	35,833	32,592	32,742	377,841
2004	31,156	30,780	32,193	30,308	28,378	26,110	24,192	26,694	29,087	27,886	27,848	25,805	340,437
2003	32,957	28,627	37,247	34,100	33,204	28,926	29,633	30,138	35,686	38,390	32,604	27,797	389,309
2002	35,727	32,899	36,225	34,381	33,832	29,307	30,427	31,385	33,377	36,573	26,136	29,301	389,570
2001	25,983	27,164	33,946	27,566	27,003	23,725	26,374	30,907	19,159	34,105	34,864	29,274	340,070
Average	31,137	29,763	34,418	31,003	30,682	27,799	27,853	30,528	29,913	34,557	30,809	28,984	

Goodyear Airport (GYR)

Year	Jan.	Feb.	Mar.	Apr.	May	Jun.	Jul.	Aug.	Sept.	Oct.	Nov.	Dec.	Total
2005	6,815	7,455	9,941	9,558	8,194	8,083	7,164	8,506	8,478	9,931	8,429	8,492	101,046
2004	12,112	11,527	13,101	8,688	9,118	6,894	6,582	8,092	7,340	7,475	7,578	6,964	105,471
2003	11,198	9,919	14,042	14,059	10,457	10,393	8,416	9,532	10,042	12,729	9,115	12,779	132,681
2002	13,675	11,330	10,746	12,781	11,139	11,100	10,934	10,315	10,668	14,192	10,681	11,013	138,574
2001	11,709	10,112	14,582	13,671	13,143	10,298	9,923	10,400	5,088	13,421	11,769	10,494	134,610
Average	11,102	10,069	12,482	11,751	10,410	9,354	8,604	9,369	8,323	11,550	9,514	9,948	

Noise Complaints

	Jan		Feb		Mar		Apr.		May		Jun.	
	Households	Complaints	Households	Complaints	Households	Complaints	Households	Complaints	Households	Complaints	Households	Complaints
DVT	6	48	6	107	2	98	1	112	3	31	6	7
GYR	0	0	1	1	0	0	1	1	4	5	2	3

	Jul.		Aug.		Sept.		Oct.		Nov.		Dec.	
	Households	Complaints	Households	Complaints	Households	Complaints	Households	Complaints	Households	Complaints	Households	Complaints
DVT	1	1	3	3	5	6	5	6	0	0	1	4
GYR	0	0	1	1	0	0	0	0	0	0	1	1

