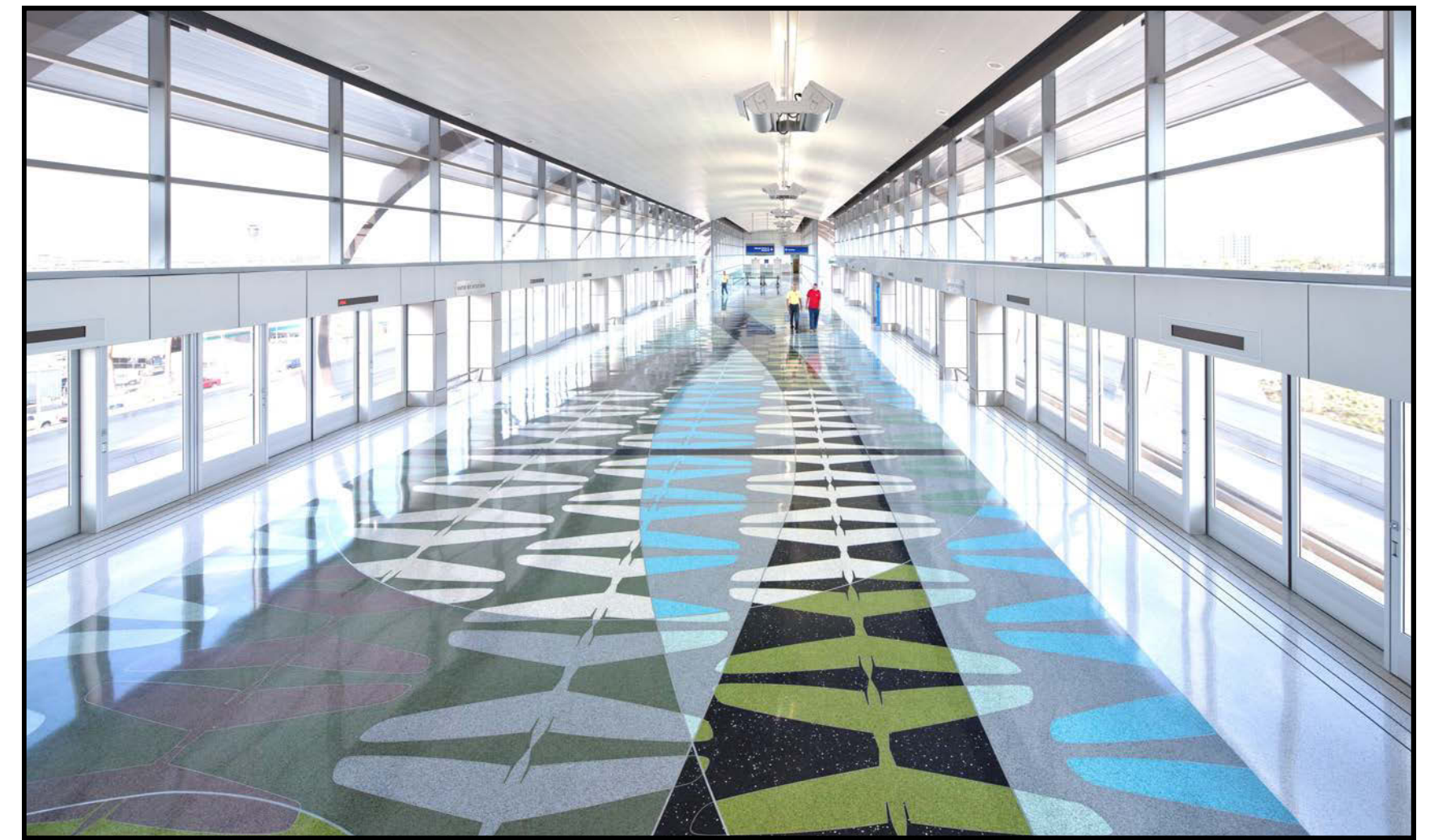


Terrazzo Floor Fabrication Process

Artist **Fausto Fernandez** was inspired by the outline of an airplane's horizontal stabilizer (also known as a tailplane) for the design of the terrazzo floor, ***Tailplane Patterns***. He began the floor's design as a series of color pencil drawings on paper. The drawings were translated into a digital image that was enlarged to fit the 440 x 40 foot platform floor. A metal fabricator water-jet cut aluminum into the various design out-line shapes. The metal line shapes were attached to the floor. The terrazzo mixtures of aggregates, coloring and polymer binder were poured and hand-troweled in place. After curing, the hardened terrazzo floor was ground and polished to a smooth finish. The result is a durable floor that is a work of art.



Fausto Fernandez, *Tailplane Patterns*, 2013, image by Bill Timmerman

The terrazzo floor's design incorporates rhythmic geometric patterns and sweeping bands of color.



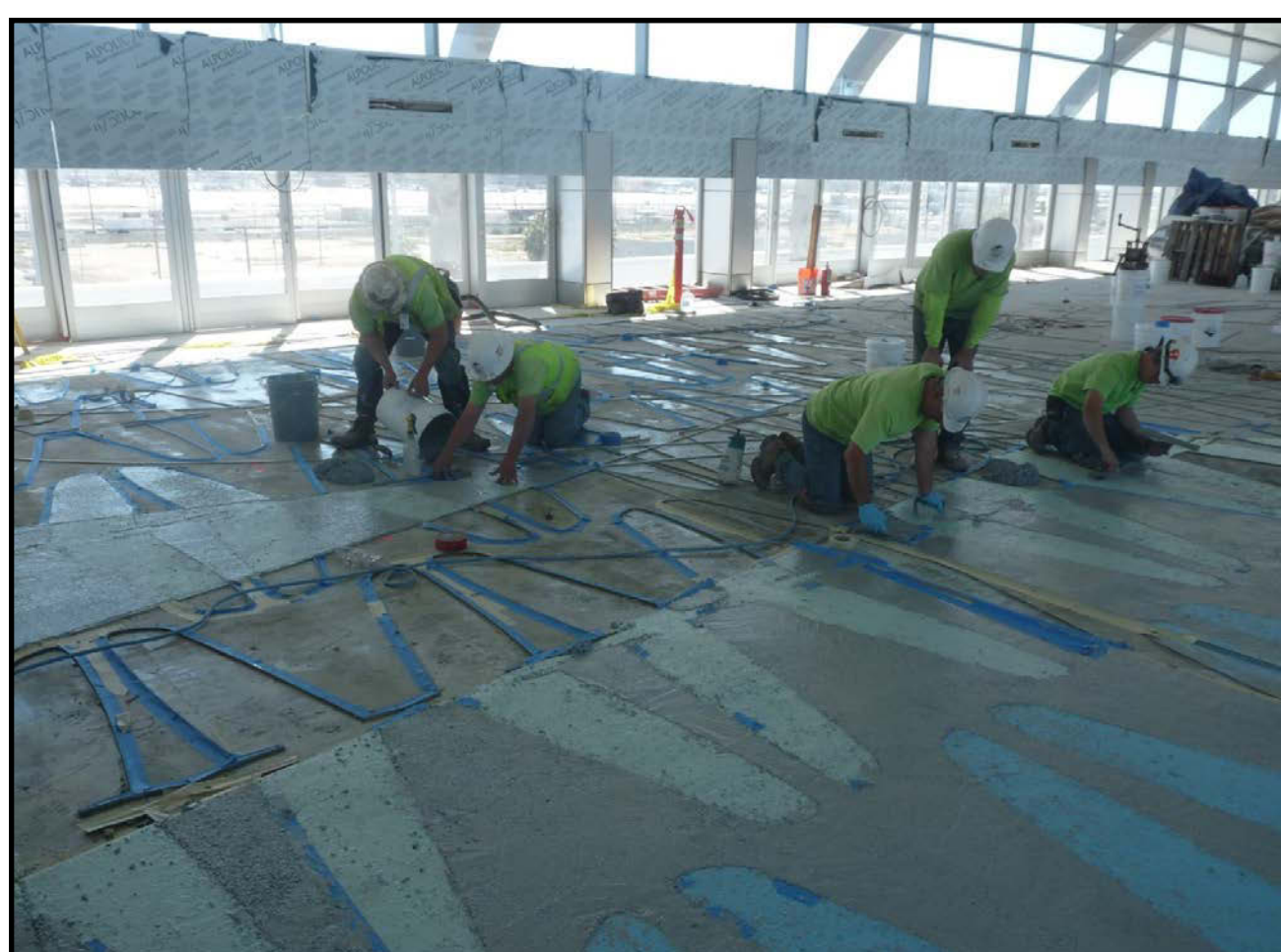
Stencils were used to transfer the design's outline shapes onto the floor.



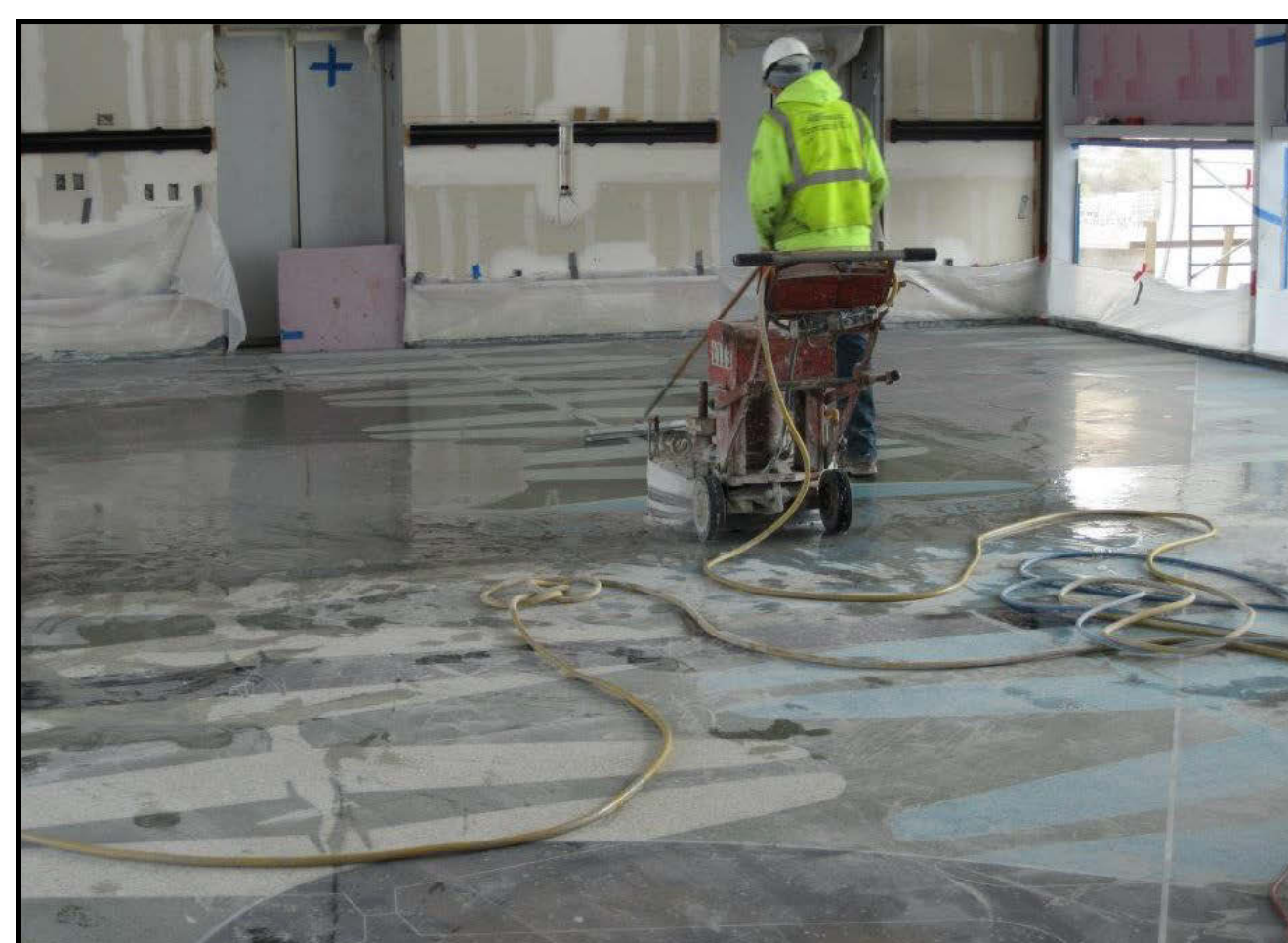
Advance Terrazzo specialists attaching the metal components to the floor. The metal outlines define the various fields of color.



Green and grey terrazzo mixtures have been poured and troweled in place.



Advance Terrazzo specialists pouring terrazzo mixtures into the metal forms with other colors hardened in place .



Advance Terrazzo specialist mechanically grinding the cured and hardened floor.



The finished terrazzo floor (detail) after grinding and polishing. The floor's design incorporates ten different colors.

Project Team:

Fausto Fernandez, Artist
Advance Terrazzo, Fabricator, Phoenix
MarZee Water Jet Services, Fabricator, Phoenix
HOK Architecture, Architect
Hensel Phelps, General Contractor
Phoenix Office of Arts and Culture Public Art Program
Phoenix Aviation Department