

Getting Started

PublicVue allows the public to view actual flight tracks to/from Phoenix Sky Harbor International Airport (PHX) as well as from other valley airports. *Please Note: There is a 10 minute delay of live flight information due to security reasons.*

PublicVue is supported by most browsers, including Internet Explorer, Chrome and Mozilla, as well as from mobile devices.

To get started please go to this link: <https://secure.symphonycdm.com/publicvue/?sys=PHX>

At the Home page, you will see four (4) links in the upper left corner of your screen.



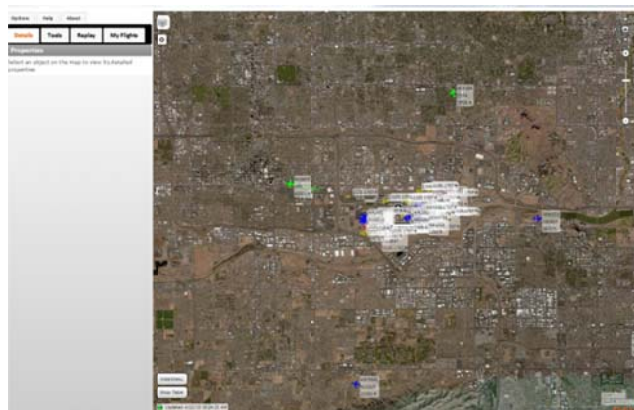
Welcome to Phoenix Sky Harbor International Airport (PHX) Aircraft Noise and Operations Portal

Our goal is to provide you with useful information about aircraft noise and flight operations taking place at the airport. This is your place to learn, share and stay in touch.

Home – This link will take you back to this Welcome screen.

Complaint – This link will take you to a Login screen where you can register, and then file a complaint. Creating a PublicVue account will save your location, easily allow you to file a complaint and view any previous complaints you may have made in PublicVue.

Flight Tracking – This link will take you to a map where you can view the flights valley wide, or enter your address to locate flights near your property. By clicking on a flight, more information and options, such as the ability to file a noise complaint, are available. *Please Note: Replay speed may vary due to system demand, internet connection and your own computer/device.*



Contact Us – This link will give you additional contact information for the City of Phoenix Aviation Department.