



**PHOENIX SKY HARBOR  
INTERNATIONAL AIRPORT**



**Monthly Commercial Ground Transportation Report  
July 2023**

## **TABLE OF CONTENTS**

A - Events

B - Section 1: Revenue GT Trips

1- All Ground Transportation Trips

Vehicle Size

Taxi

Rideshare

Prearranged

Off-Airport Parking

Hotel/Motel

Intercity

Charter Bus

Courtesy

C - Section 2: Non-Revenue GT Trips

RCC Bus Ridership

PHX Sky Train® Ridership

## Events Impacting Number of Trips

<b>Date</b>	<b>Event</b>	<b>Notes</b>
Jan-11	BCS Championship Game in Glendale	Auburn vs Oregon, busiest rental car event ever for Phoenix (Bigger than SuperBowl)
Jul-11	MLB All Star Game	Held downtown at Chase MLB All Star is a week long event.
Apr-13	PHX Sky Train Stage 1 open	
Oct-13	TNCs arrived in Phoenix	Uber & Lyft operating in Phoenix
Jan-14	AVI System Change	Trips now calculated by AVI system
Jun-14	Ended Contracted Limo Service	
Dec-14	PHX Sky Train Stage 1A open	PHX Sky Train service provided to Terminal 3 (and Terminal 2 via walking path)
Jan-15	Change to AVI	Have started calculating trip fees for Supershuttle...will be the same calculation for all vehicles. They now receive 4 entry & 4 exits per trip, has caused a reduction in the number of trips.
Feb-15	SuperBowl	SuperBowl impacted number of fares during 2 week event.
Jan-16	BCS Championship Game	Clemson vs. Alabama, RCC had high pax counts.
Jun-16	Implement New GT Policy	Transportation Network Companies began service, Charter Operators required to more completely report trips through AVI, has caused an increase in the number of trips.
Dec-16	New Trip Logic	Implement new trip logic for calculation of trips for all AVI users (excluding taxi, trip applied upon entrance to C-Lot). Begin tracking providers for only pick-ups, old logic tracked all airport access.
Jan-17	Begin Phased Trip Fees	Begin the three-year phase in of trip fees to providers permitted prior to 6/18/16.
Mar-17	NCAA Final Four	Phoenix hosted the NCAA Final Four and associated events from March 24 - 27; the event increased overall GT traffic for the month.
May-18	New Taxi Contract	New taxi contract w/ PHX Sky Harbor Airport effective 5/1/18
Dec-19	SuperShuttle Ends Service	SuperShuttle ended service effective 12/31/19 at PHX Sky Harbor Airport.
15-Mar-20	Health Emergency - COVID-19	Health crisis due to COVID-19 affecting global economy.
May-20	New GT Trip Policy	New trip policy effective 5/1/20 to implement new trip fees and include drop-off fees.
Dec-22	PHX Sky Train Stage 2 opens	PHX Sky Train service to Rental Car Center begins 12/20/22, no RCC bus service thereafter.
Feb-23	Superbowl LVII	Increased trips and passenger activity due to Superbowl.

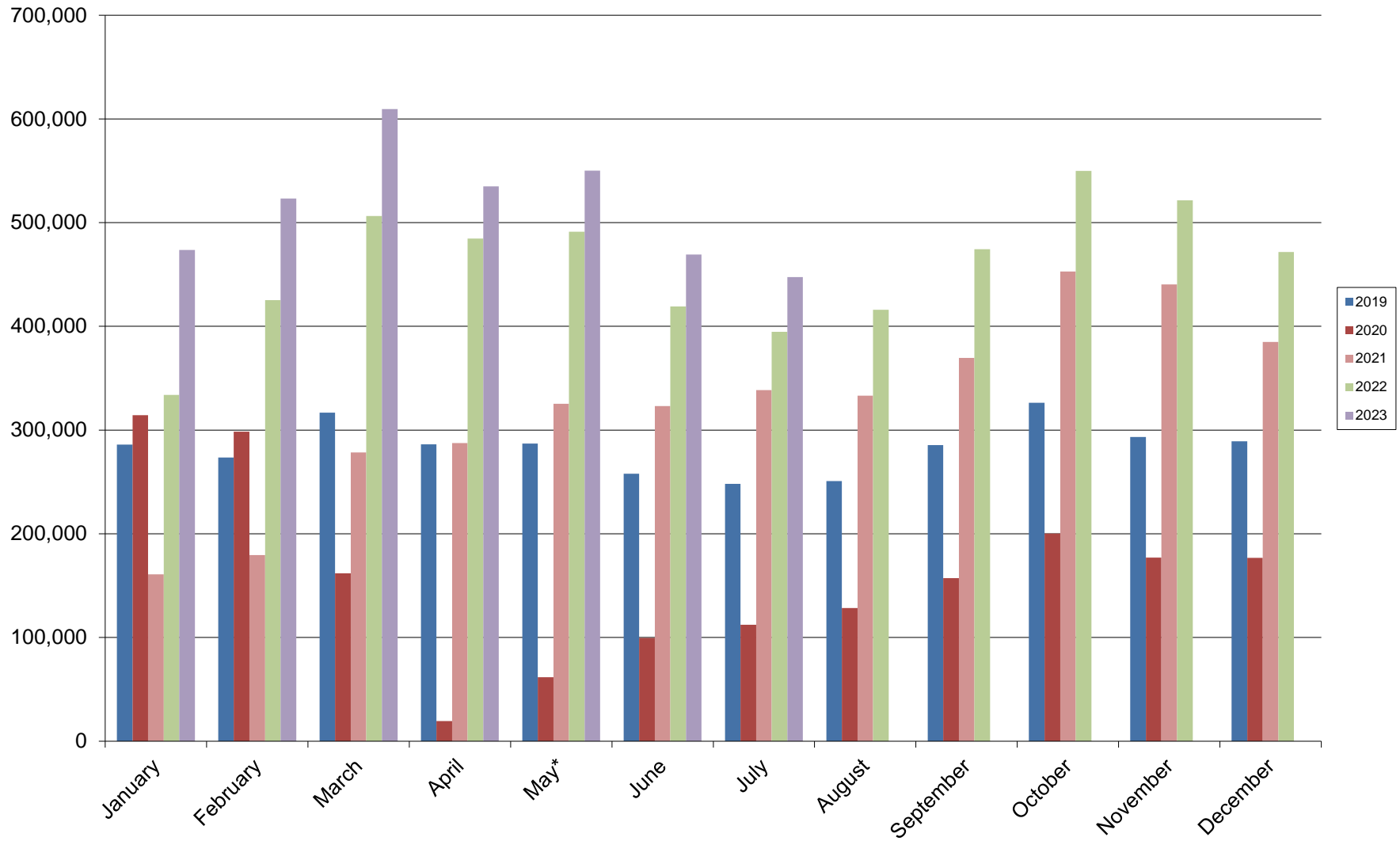
## SECTION 1: REVENUE GT TRIPS

\*Figures reported in trips using AVI and GPS trip-tracking

## Total Monthly Ground Transportation Trips

<u>Month</u>	<u>2019</u>	<u>2020</u>	<u>2021</u>	<u>2022</u>	<u>2023</u>
January	286,025	314,421	160,970	333,804	473,700
February	273,511	298,592	179,488	425,211	523,212
March	316,751	161,956	278,356	506,324	609,590
April	286,145	19,546	287,486	484,716	535,003
May*	287,107	61,776	325,358	491,244	550,089
June	257,893	99,536	323,053	419,241	469,166
July	248,109	112,350	338,523	394,701	447,536
August	250,907	128,399	333,235	415,995	
September	285,541	157,359	369,633	474,359	
October	326,284	200,277	452,791	549,942	
November	293,355	176,944	440,309	521,592	
December	289,189	176,696	385,022	471,656	
<b>TOTAL</b>	<b>3,400,817</b>	<b>1,907,852</b>	<b>3,874,224</b>	<b>5,488,785</b>	<b>3,608,296</b>
*Trips include pick-ups and drop-offs effective 5/1/2020					

### Total Monthly Ground Transportation Trips



## Trips by Vehicle Size

### All Operators

<b>2019</b>	<b>Jan</b>	<b>Feb</b>	<b>Mar</b>	<b>Apr</b>	<b>May</b>	<b>Jun</b>	<b>Jul</b>	<b>Aug</b>	<b>Sep</b>	<b>Oct</b>	<b>Nov</b>	<b>Dec</b>
1-8 Seats	243,470	235,135	271,720	242,361	242,291	215,387	205,158	209,121	244,185	278,016	241,713	228,998
9-23 Seats	39,639	35,084	41,571	39,519	41,433	39,936	40,076	38,898	38,475	41,908	38,238	40,328
24+ Seats	1,048	1,464	927	654	539	354	323	232	321	546	495	286
<b>Total</b>	<b>284,157</b>	<b>271,683</b>	<b>314,218</b>	<b>282,534</b>	<b>284,263</b>	<b>255,677</b>	<b>245,557</b>	<b>248,251</b>	<b>282,981</b>	<b>320,470</b>	<b>280,446</b>	<b>269,612</b>

### All Operators

<b>2020</b>	<b>Jan</b>	<b>Feb</b>	<b>Mar</b>	<b>Apr</b>	<b>May</b>	<b>Jun</b>	<b>Jul</b>	<b>Aug</b>	<b>Sep</b>	<b>Oct</b>	<b>Nov</b>	<b>Dec</b>
1-8 Seats	277,011	263,433	136,149	14,432	55,278	85,552	95,125	110,101	137,534	177,511	155,664	154,793
9-23 Seats	36,669	34,491	25,386	5,088	6,453	13,911	17,278	18,336	19,798	22,698	21,191	21,781
24+ Seats	670	556	354	0	0	6	5	21	16	68	79	101
<b>Total</b>	<b>314,350</b>	<b>298,480</b>	<b>161,889</b>	<b>19,520</b>	<b>61,731</b>	<b>99,469</b>	<b>112,408</b>	<b>128,458</b>	<b>157,348</b>	<b>200,277</b>	<b>176,934</b>	<b>176,675</b>

### All Operators

<b>2021</b>	<b>Jan</b>	<b>Feb</b>	<b>Mar</b>	<b>Apr</b>	<b>May</b>	<b>Jun</b>	<b>Jul</b>	<b>Aug</b>	<b>Sep</b>	<b>Oct</b>	<b>Nov</b>	<b>Dec</b>
1-8 Seats	141,610	163,265	249,422	253,248	287,527	280,530	294,352	289,477	327,381	403,281	394,060	341,090
9-23 Seats	19,330	16,059	28,712	33,952	37,488	42,028	43,653	43,037	41,458	48,532	45,170	43,055
24+ Seats	131	172	233	290	364	544	490	706	776	963	1,053	865
<b>Total</b>	<b>161,071</b>	<b>179,496</b>	<b>278,367</b>	<b>287,490</b>	<b>325,379</b>	<b>323,102</b>	<b>338,495</b>	<b>333,220</b>	<b>369,615</b>	<b>452,776</b>	<b>440,283</b>	<b>385,010</b>

### All Operators

<b>2022</b>	<b>Jan</b>	<b>Feb</b>	<b>Mar</b>	<b>Apr</b>	<b>May</b>	<b>Jun</b>	<b>Jul</b>	<b>Aug</b>	<b>Sep</b>	<b>Oct</b>	<b>Nov</b>	<b>Dec</b>
1-8 Seats	295,374	384,015	456,144	433,316	439,329	369,696	346,916	368,203	425,023	496,773	471,186	420,410
9-23 Seats	37,440	39,863	48,352	49,741	50,319	48,449	46,992	46,929	48,027	51,544	48,922	50,202
24+ Seats	926	1,052	1,496	1,340	1,278	840	573	579	1,027	1,451	1,183	783
<b>Total</b>	<b>333,740</b>	<b>424,930</b>	<b>505,992</b>	<b>484,397</b>	<b>490,926</b>	<b>418,985</b>	<b>394,481</b>	<b>415,711</b>	<b>474,077</b>	<b>549,768</b>	<b>521,291</b>	<b>471,395</b>

## Trips by Vehicle Size

### *All Operators*

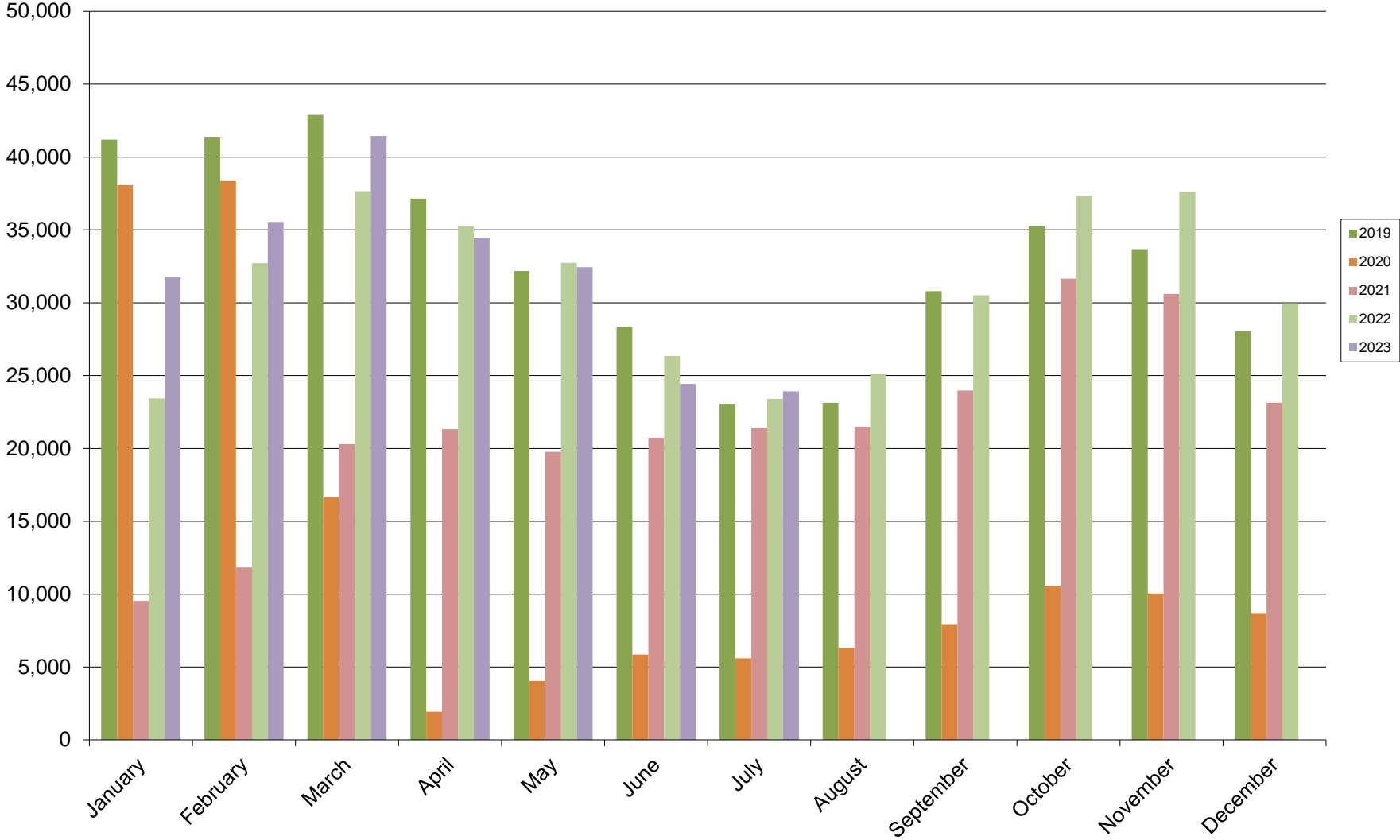
<b>2023</b>	<b>Jan</b>	<b>Feb</b>	<b>Mar</b>	<b>Apr</b>	<b>May</b>	<b>Jun</b>	<b>Jul</b>	<b>Aug</b>	<b>Sep</b>	<b>Oct</b>	<b>Nov</b>	<b>Dec</b>
1-8 Seats	425,443	475,233	552,915	482,218	496,614	420,469	399,353					
9-23 Seats	46,692	46,501	54,989	51,404	52,324	47,984	47,655					
24+ Seats	1,273	1,204	1,322	1,063	994	683	495					
<b>Total</b>	<b>473,408</b>	<b>522,938</b>	<b>609,226</b>	<b>534,685</b>	<b>549,932</b>	<b>469,136</b>	<b>447,503</b>	<b>0</b>	<b>0</b>	<b>0</b>	<b>0</b>	<b>0</b>



# Taxi Trips

<u>Month</u>	<u>2019</u>	<u>2020</u>	<u>2021</u>	<u>2022</u>	<u>2023</u>
January	41,204	38,077	9,533	23,435	31,738
February	41,329	38,360	11,823	32,712	35,544
March	42,897	16,660	20,285	37,651	41,446
April	37,142	1,930	21,313	35,254	34,467
May	32,178	4,044	19,768	32,735	32,437
June	28,331	5,864	20,730	26,337	24,427
July	23,070	5,596	21,427	23,399	23,923
August	23,135	6,319	21,491	25,120	
September	30,794	7,928	23,973	30,518	
October	35,247	10,571	31,648	37,313	
November	33,682	10,046	30,605	37,620	
December	28,063	8,701	23,129	29,964	
<b>TOTAL</b>	<b>397,072</b>	<b>154,096</b>	<b>255,725</b>	<b>372,058</b>	<b>223,982</b>

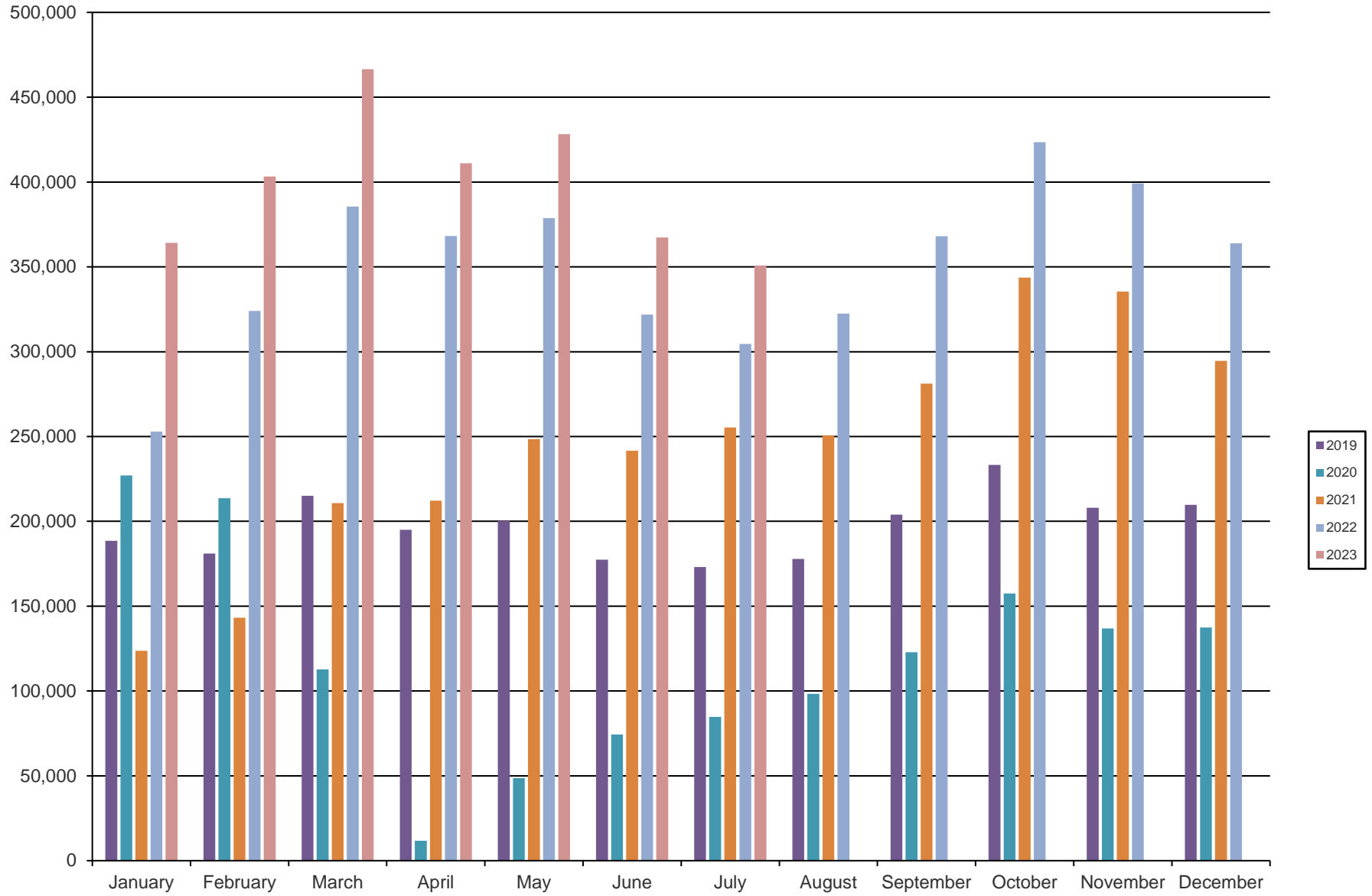
# Taxi Trips



# RideshareTrips

<u>Month</u>	<u>2019</u>	<u>2020</u>	<u>2021</u>	<u>2022</u>	<u>2023</u>
January	188,569	227,028	123,700	252,837	364,227
February	180,978	213,683	143,177	324,082	403,207
March	215,082	112,695	210,767	385,521	466,437
April	195,017	11,795	212,228	368,271	411,032
May	200,331	48,678	248,366	378,781	428,278
June	177,409	74,412	241,663	321,932	367,389
July	173,029	84,704	255,313	304,592	350,678
August	177,786	98,309	250,689	322,473	
September	204,017	122,913	281,242	368,008	
October	233,327	157,486	343,722	423,458	
November	208,034	136,827	335,517	399,181	
December	209,699	137,502	294,671	363,934	
<b>TOTAL</b>	<b>2,363,278</b>	<b>1,426,032</b>	<b>2,941,055</b>	<b>4,213,070</b>	<b>2,791,248</b>
*Rideshare data is based on monthly GPS trip tracking reports submitted by TNC providers					

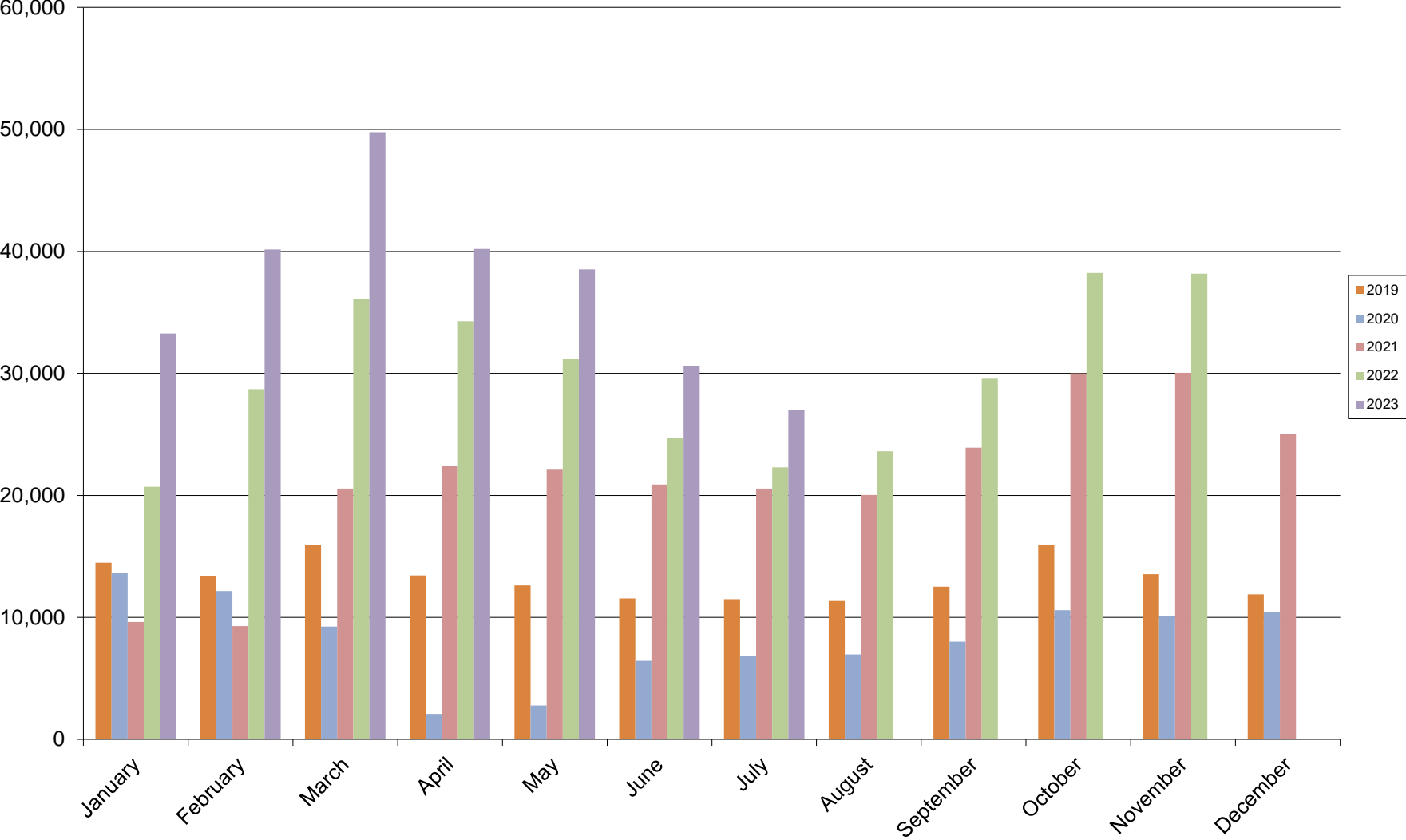
# Rideshare Trips



## Prearranged Trips

<b><u>Month</u></b>	<b><u>2019</u></b>	<b><u>2020</u></b>	<b><u>2021</u></b>	<b><u>2022</u></b>	<b><u>2023</u></b>
January	14,494	13,663	9,635	20,714	33,261
February	13,425	12,169	9,290	28,709	40,164
March	15,899	9,239	20,565	36,101	49,781
April	13,437	2,077	22,424	34,272	40,201
May	12,630	2,787	22,162	31,173	38,516
June	11,560	6,439	20,891	24,725	30,638
July	11,481	6,828	20,566	22,299	27,000
August	11,349	6,959	20,024	23,608	
September	12,506	8,012	23,901	29,569	
October	15,977	10,596	30,009	38,227	
November	13,546	10,088	30,041	38,176	
December	11,897	10,425	25,054	30,485	
<b>TOTAL</b>	<b>158,201</b>	<b>99,282</b>	<b>254,562</b>	<b>358,058</b>	<b>259,561</b>

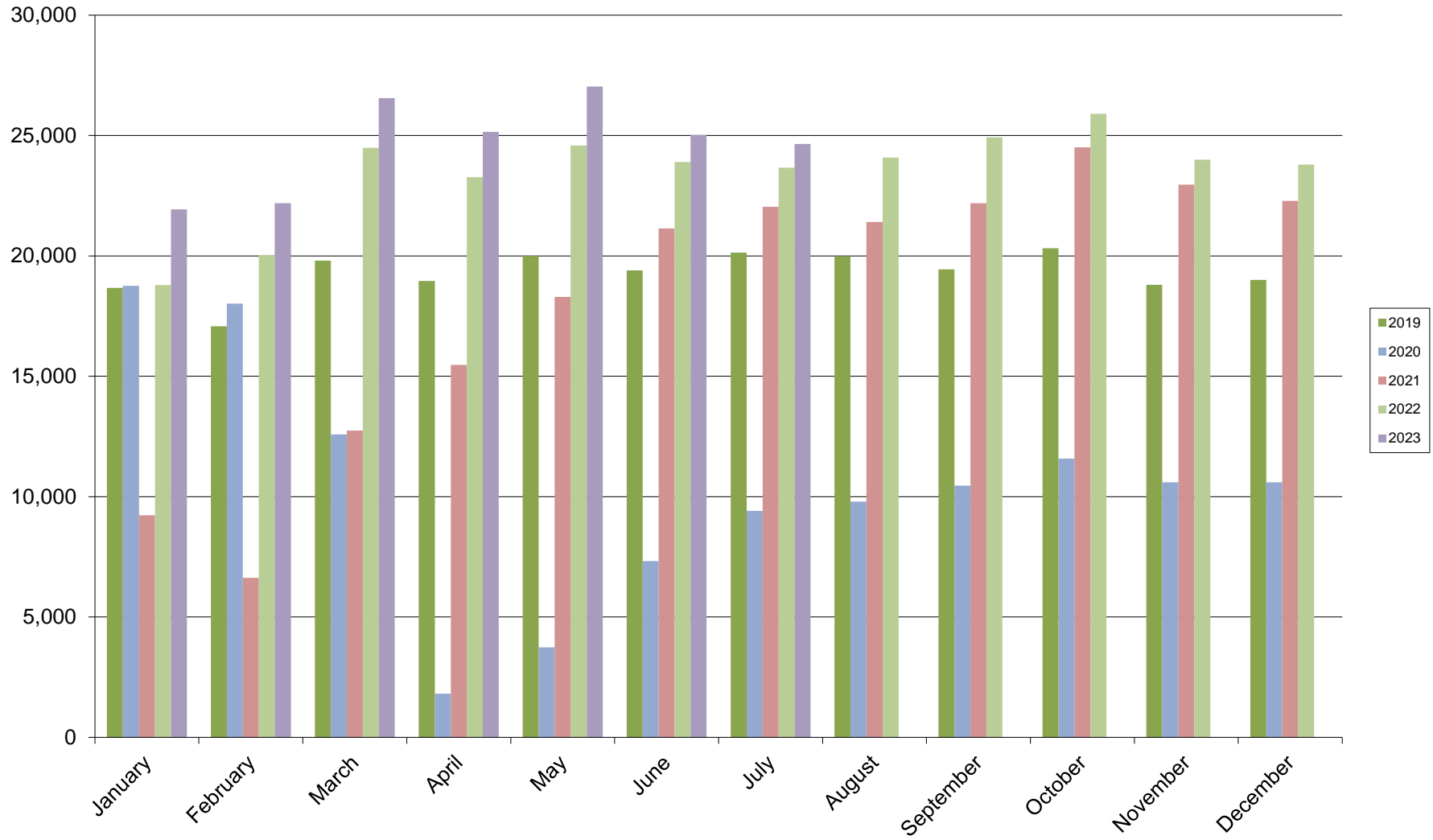
# Prearranged Trips



## Off-Airport Parking Trips

<u>Month</u>	<u>2019</u>	<u>2020</u>	<u>2021</u>	<u>2022</u>	<u>2023</u>
January	18,666	18,759	9,227	18,792	21,938
February	17,075	18,014	6,627	20,039	22,187
March	19,804	12,584	12,746	24,490	26,555
April	18,956	1,814	15,471	23,275	25,157
May	19,997	3,742	18,295	24,590	27,035
June	19,396	7,325	21,138	23,906	25,022
July	20,132	9,409	22,038	23,671	24,655
August	19,983	9,795	21,410	24,088	
September	19,441	10,454	22,185	24,928	
October	20,317	11,578	24,511	25,901	
November	18,802	10,598	22,955	24,002	
December	19,004	10,596	22,283	23,799	
<b>TOTAL</b>	<b>231,573</b>	<b>124,668</b>	<b>218,886</b>	<b>281,481</b>	<b>172,549</b>

### Off-Airport Parking Trips

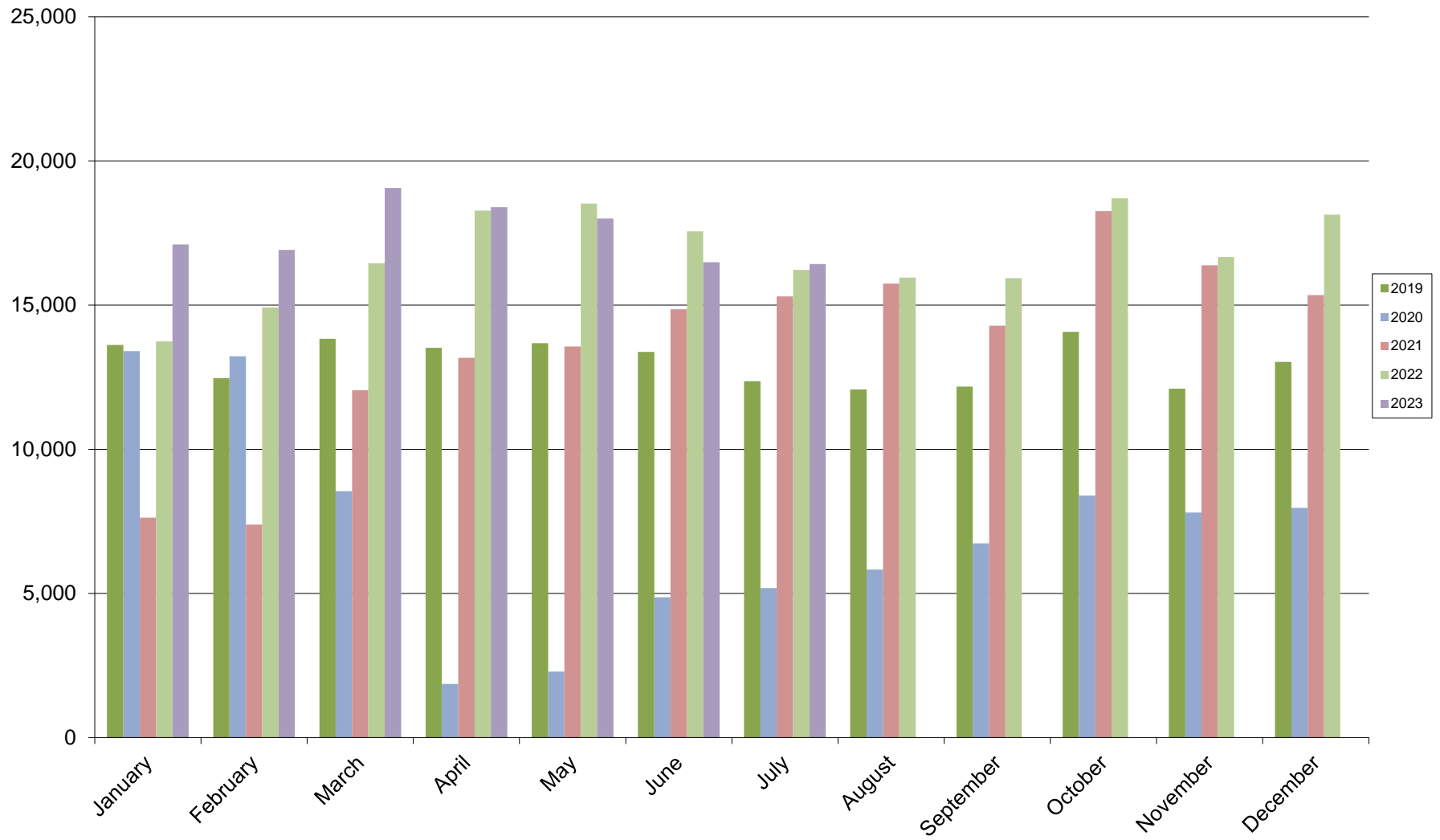




## Hotel/Motel Trips

<b><u>Month</u></b>	<b><u>2019</u></b>	<b><u>2020</u></b>	<b><u>2021</u></b>	<b><u>2022</u></b>	<b><u>2023</u></b>
January	13,612	13,402	7,628	13,743	17,098
February	12,468	13,225	7,387	14,916	16,912
March	13,832	8,542	12,044	16,450	19,060
April	13,517	1,855	13,168	18,278	18,390
May	13,675	2,289	13,560	18,518	17,998
June	13,379	4,861	14,856	17,553	16,490
July	12,363	5,185	15,301	16,217	16,424
August	12,075	5,827	15,746	15,952	
September	12,172	6,734	14,284	15,936	
October	14,070	8,393	18,261	18,709	
November	12,103	7,800	16,376	16,668	
December	13,025	7,963	15,343	18,135	
<b>TOTAL</b>	<b>156,291</b>	<b>86,076</b>	<b>163,954</b>	<b>201,075</b>	<b>122,372</b>

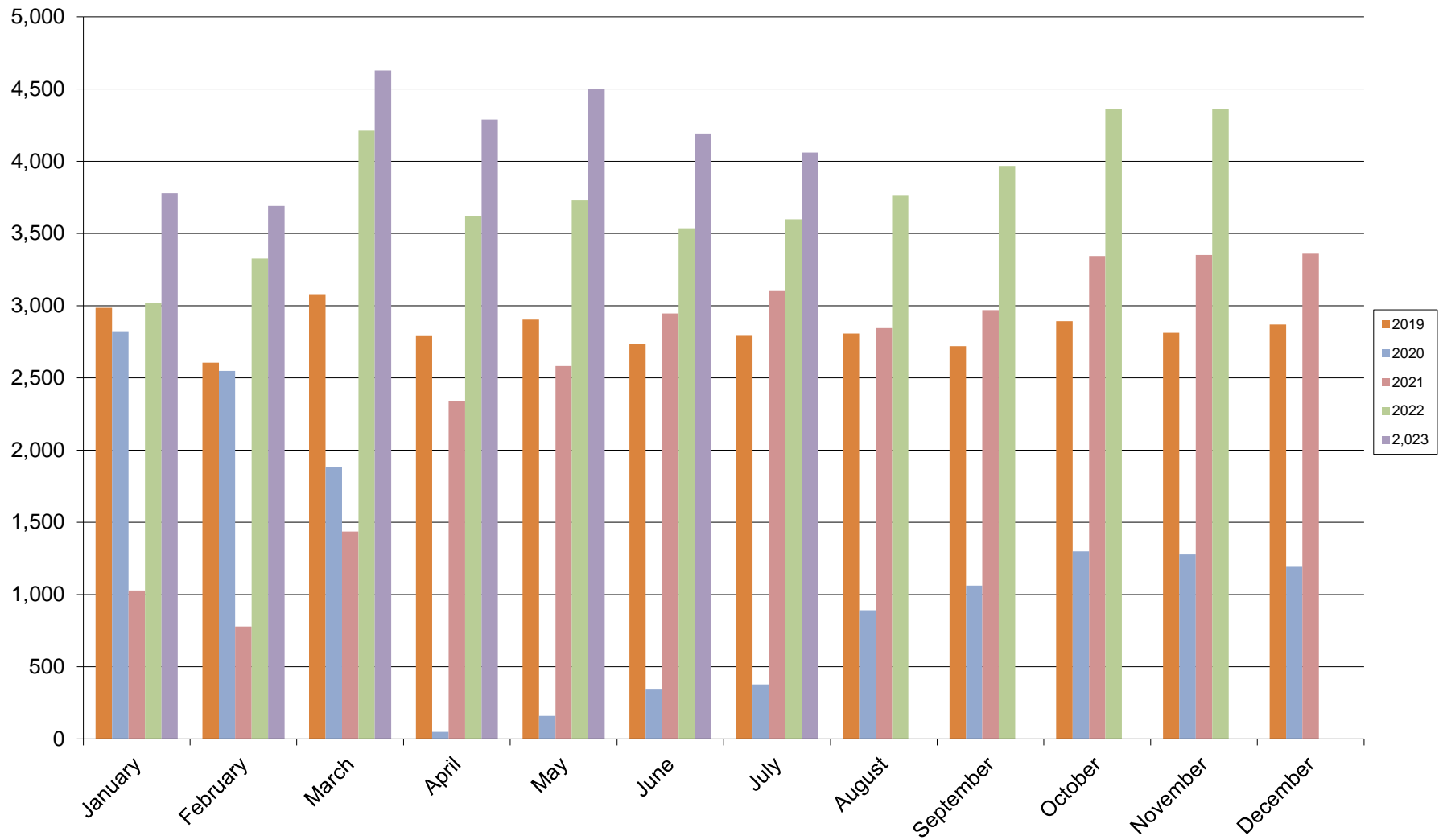
### Hotel/Motel Trips



# Intercity Trips

<b><u>Month</u></b>	<b><u>2019</u></b>	<b><u>2020</u></b>	<b><u>2021</u></b>	<b><u>2022</u></b>	<b><u>2,023</u></b>
January	2,986	2,817	1,027	3,021	3,778
February	2,606	2,548	778	3,326	3,691
March	3,074	1,881	1,436	4,212	4,628
April	2,794	49	2,338	3,620	4,288
May	2,904	160	2,583	3,728	4,502
June	2,732	347	2,946	3,536	4,193
July	2,797	378	3,102	3,598	4,061
August	2,807	890	2,845	3,766	
September	2,719	1,061	2,969	3,968	
October	2,892	1,298	3,343	4,363	
November	2,813	1,277	3,351	4,363	
December	2,870	1,191	3,359	4,190	
<b>TOTAL</b>	<b>33,994</b>	<b>13,897</b>	<b>30,077</b>	<b>45,691</b>	<b>29,141</b>

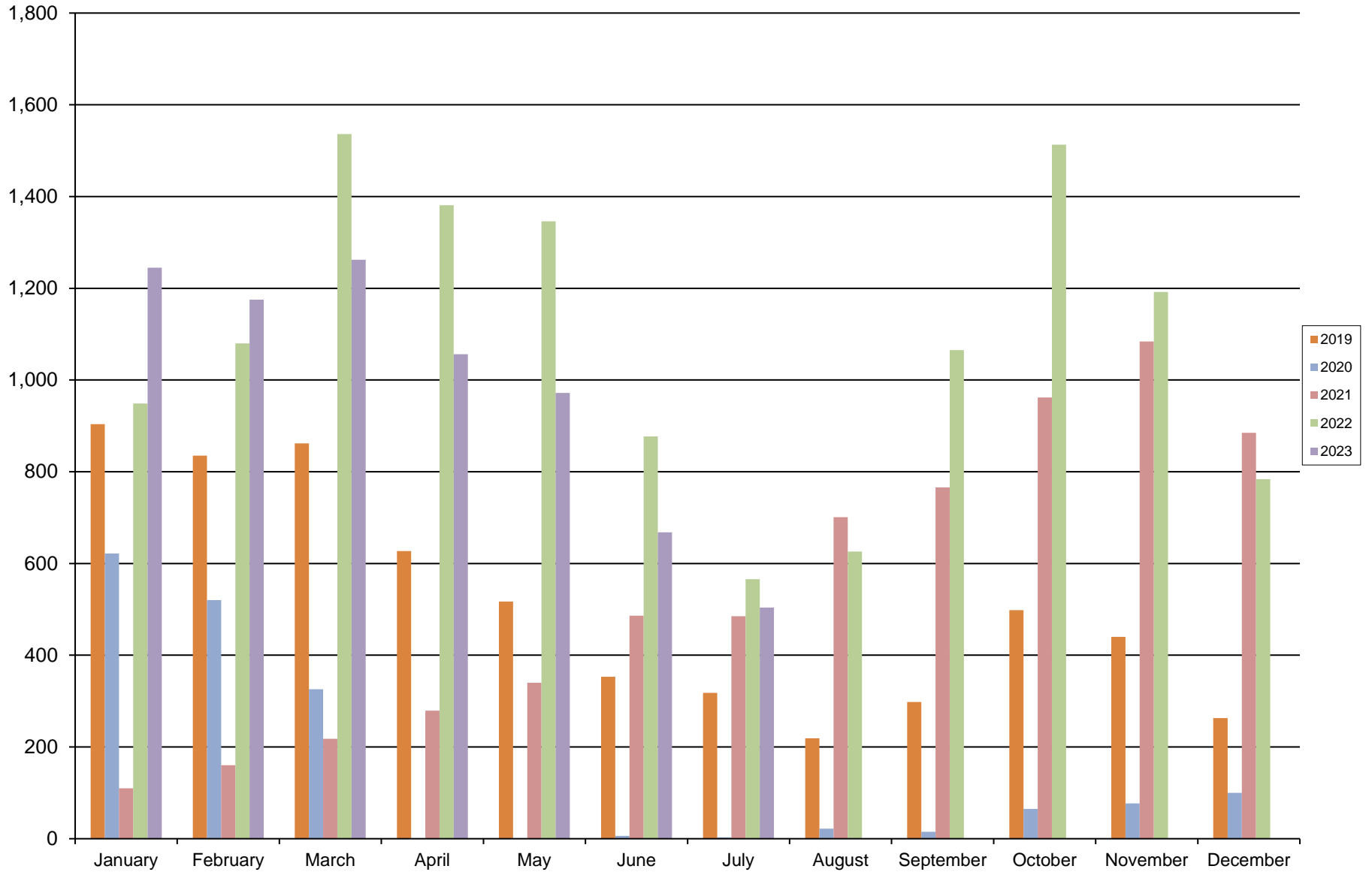
## Intercity Trips



# Charter Trips

<b><u>Month</u></b>	<b><u>2019</u></b>	<b><u>2020</u></b>	<b><u>2021</u></b>	<b><u>2022</u></b>	<b><u>2023</u></b>
January	904	622	110	949	1,245
February	835	520	160	1,080	1,175
March	862	326	218	1,536	1,262
April	627	0	279	1,381	1,056
May	517	0	340	1,346	972
June	353	6	486	877	668
July	318	3	485	566	504
August	219	22	701	626	
September	298	15	766	1,065	
October	498	65	962	1,513	
November	440	77	1,084	1,192	
December	263	100	885	784	
<b>TOTAL</b>	<b>6,134</b>	<b>1,756</b>	<b>6,476</b>	<b>12,915</b>	<b>6,882</b>

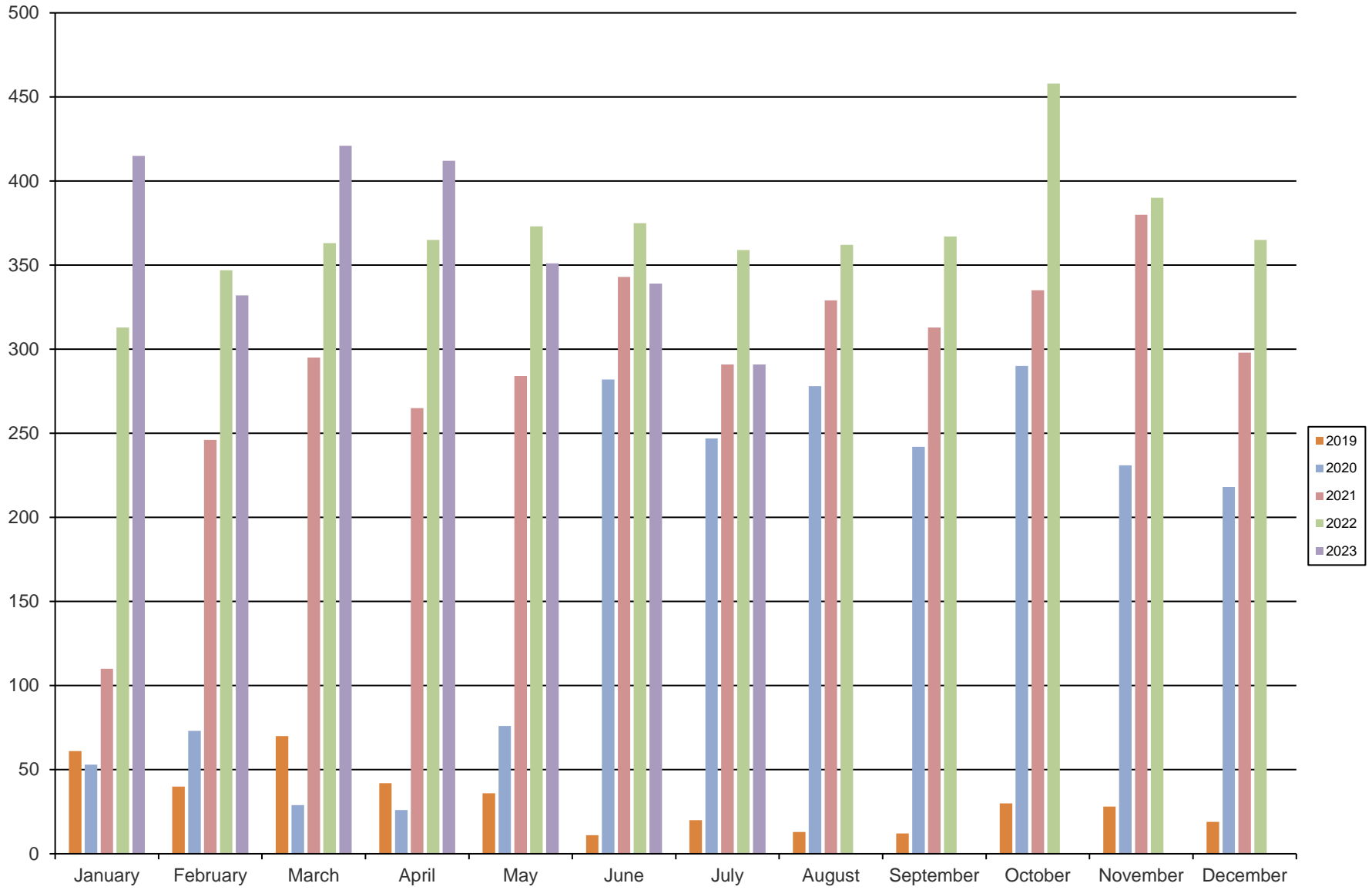
# Charter Trips



# Courtesy Trips

<b><u>Month</u></b>	<b><u>2019</u></b>	<b><u>2020</u></b>	<b><u>2021</u></b>	<b><u>2022</u></b>	<b><u>2023</u></b>
January	61	53	110	313	415
February	40	73	246	347	332
March	70	29	295	363	421
April	42	26	265	365	412
May	36	76	284	373	351
June	11	282	343	375	339
July	20	247	291	359	291
August	13	278	329	362	
September	12	242	313	367	
October	30	290	335	458	
November	28	231	380	390	
December	19	218	298	365	
<b>TOTAL</b>	<b>382</b>	<b>2,045</b>	<b>3,489</b>	<b>4,437</b>	<b>2,561</b>

# Courtesy Trips





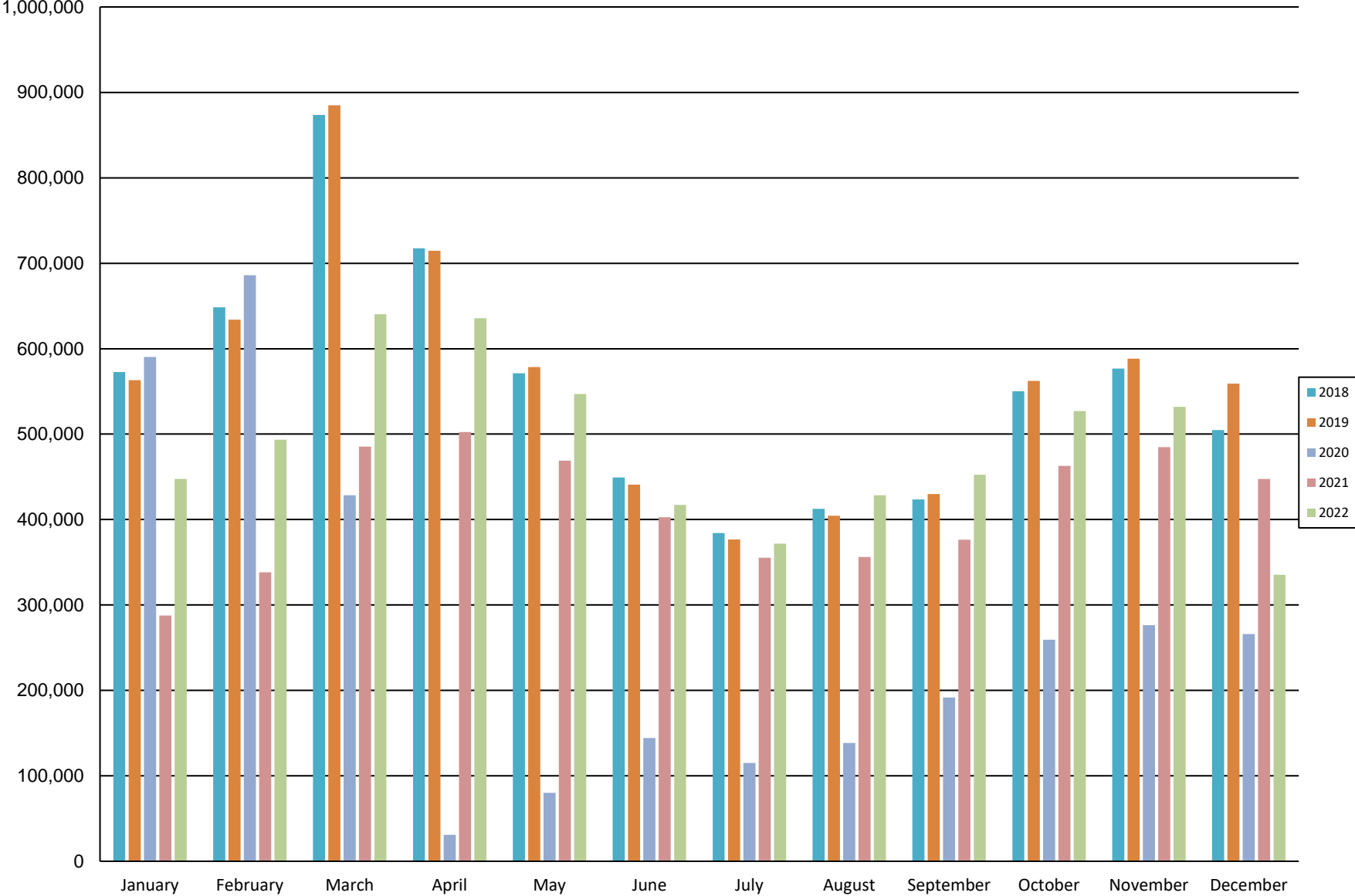
SECTION 2: NON-REVENUE GT TRIPS

\*Figures reported in Passenger Ridership

# RCC Bus Ridership

<u>Month</u>	<u>2018</u>	<u>2019</u>	<u>2020</u>	<u>2021</u>	<u>2022</u>
January	572,787	563,088	590,437	287,683	447,568
February	648,467	633,975	685,947	338,151	493,474
March	873,551	885,003	428,494	485,464	640,419
April	717,425	714,739	31,073	502,531	635,819
May	571,374	578,406	80,004	468,818	547,088
June	449,222	440,747	144,253	402,699	417,155
July	384,118	376,632	115,011	355,260	371,908
August	412,648	404,437	138,635	356,291	428,513
September	423,656	429,748	191,602	376,277	452,363
October	550,051	562,416	259,337	462,864	527,011
November	576,816	588,273	276,461	484,799	532,047
December	504,774	559,015	266,118	447,437	335,344
<b>TOTAL</b>	<b>6,684,889</b>	<b>6,736,479</b>	<b>3,207,372</b>	<b>4,968,274</b>	<b>5,828,709</b>
	*No RCC Bus service effective 12/20/22				

# RCC Bus Ridership



# PHX Sky Train® Ridership

<b><u>Month</u></b>	<b><u>2019</u></b>	<b><u>2020</u></b>	<b><u>2021</u></b>	<b><u>2022</u></b>	<b><u>2023</u></b>
January	445,423	416,980	140,681	331,226	1,081,354
February	417,046	430,209	122,833	347,341	1,141,195
March	485,526	329,320	273,412	449,436	1,482,788
April	405,244	79,820	263,134	330,415	1,299,290
May	440,841	81,761	319,050	409,864	1,180,829
June	482,305	104,490	346,594	406,568	998,519
July	481,076	130,999	413,704	415,175	912,464
August	472,101	140,469	351,223	381,237	
September	446,536	143,951	351,128	404,545	
October	496,200	161,323	382,881	359,095	
November	444,275	149,981	390,206	369,735	
December	447,586	156,544	391,309	705,064	
<b>TOTAL</b>	<b>5,464,159</b>	<b>2,325,847</b>	<b>3,746,155</b>	<b>4,909,701</b>	<b>8,096,439</b>

# PHX Sky Train® Ridership

