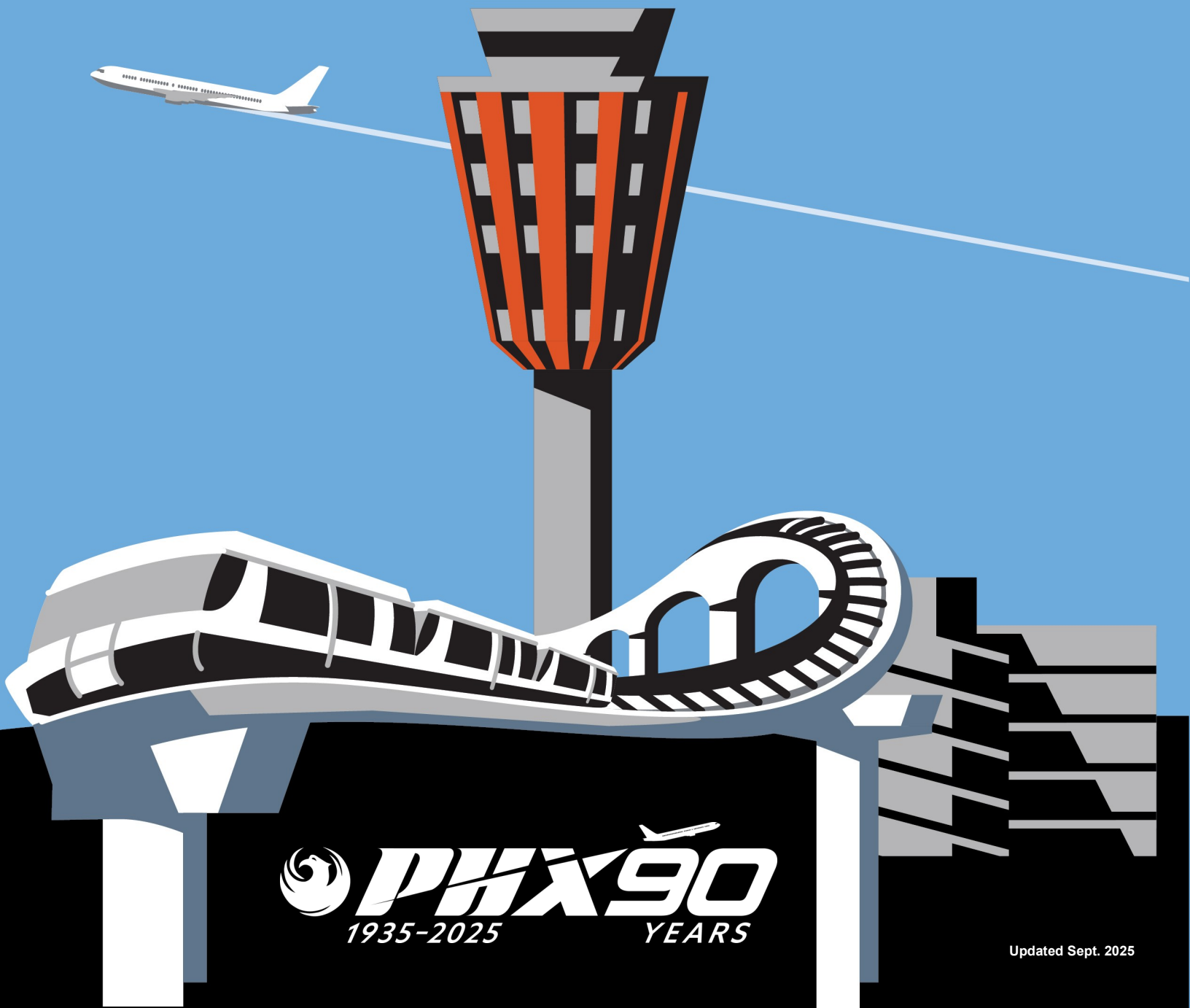


PHX DVT BYR

 CITY OF PHOENIX AVIATION DEPARTMENT

Media Kit 2025



 ***PHX 90***
1935-2025 YEARS

Updated Sept. 2025

Get To Know Us!



Phoenix Sky Harbor International Airport served more than 52 million passengers in 2024, a new record for the airport and an increase of 7.5 percent from the previous record in 2023.

The airport celebrated the arrival of the 50 millionth passenger on Tuesday, Dec. 17, 2024, which was the first time reaching that milestone.

2025 marks the 90th anniversary of the city of Phoenix purchasing the airport.

Get To Know Us!



On average, how many aircraft arrive and depart each day?
More than 1,000

How many different airlines are at Phoenix Sky Harbor?
25 commercial airlines

How many tons of cargo are processed each day?
More than 1,000 tons

What are the names of the two terminals at Phoenix Sky Harbor?
John S. McCain III, Terminal 3 and Barry M. Goldwater, Terminal 4

How long is Phoenix Sky Harbor's longest runway? **11,489 feet**

What is Phoenix Sky Harbor's slogan? **America's Friendliest Airport®**

How often does an airplane land or take off at Phoenix Sky Harbor?
Nearly one takeoff every minute

How many airline gates does Phoenix Sky Harbor have? **114**

How tall is the control tower at Phoenix Sky Harbor? **315 feet**

MILESTONES

In 1928
Scenic Airways
founded
Sky Harbor

In 1935
City of Phoenix
buys Sky Harbor

In 1952
Terminal 1 was
completed for a
cost of \$835,000.

April 1962
Terminal 2 opened
at a cost of \$2.7
million.

October 1979
Terminal 3 with
adjacent parking
garage completed
for \$48 million.

Nov. 1990
Terminal 4 opened
at a cost of \$248
million.

In 2000
Opened third runway.

In 2006
Rental Car Center
was opened.

In 2007
New Air Traffic
Control Tower and
Terminal Radar
Approach Control
Facility opened

2010-2022
Three segments of
the PHX Sky Train®
built and opened.

In 2020
Terminal 3
Modernization
completed.

June 2022
Terminal 4 Eighth
Concourse opens

In 2024
50 million+
passengers in a
single year

July 2025
90th Anniversary

Get To Know Us!



ECONOMIC IMPACT

\$121.5 million daily
into Arizona economy

\$44.3 billion annual
total economic output

120+ domestic
destinations

20+ international
destinations

47,000+ jobs

DAILY STATS

1,200+
aircraft arrive
and depart

140,000+
passengers
each day

PHX Sky Train®



In 2009, construction began on the PHX Sky Train® between Valley Metro Rail, East Economy parking, and Terminal 4. Stage 1 opened April 8, 2013 and is 1.7 miles long. Stage 1A soon followed which extended the PHX Sky Train® 0.7 miles from Terminal 4 to Terminal 3. It began passenger service in December 2014. These two phases included four stations and three miles of dual-lane guideway. The project included a maintenance and storage facility for the 18 vehicle fleet.

The PHX Sky Train® final phase, Stage 2, included the construction of two new stations and 2.5 miles of dual lane guideway. It opened to the public on Dec. 20, 2022.

The Stage 2 stations include the Rental Car Center and 24th Street, near 24th Street and Buckeye Road. The 24th Street Station includes more than 1,600 additional economy parking spaces, along with additional curbside pick-up and drop off areas for passengers.

Stage 2 also added another 24 cars to the fleet enabling a three-car configuration to be used. With each car able to hold 53 passengers, this allows more than 150 passengers to use each three-car train.

PHX Sky Train®



The trains run continuously in both directions 24 hours a day, seven days a week and arrive as frequently as every three minutes. They travel at an average speed of 23 mph, but can go up to 38 mph.

In total, it takes about 13 minutes for the trains to travel the five miles from the 44th Street PHX Sky Train® Station to the Rental Car Center Station.

Initial projections indicated about 2.5 million passengers were expected to ride the train in its first year (7,000/day). However, ridership exceeded expectations with a daily average of about 14,000 riders.

Anticipated daily ridership with the opening of Stage 2 was about 35,000 daily riders. That number has also been exceeded with about 40,000 daily riders in 2024. In the future with airport growth, there are expected to be about 79,000 daily passengers.

The driverless train runs on an electrically powered, center-rail guideway and facilities. After earning gold certification in the Leadership in Energy and Environmental Design (LEED) program for Stages 1 and 1A, the airport sought a different certification for Stage 2. This project received Gold Certification through the Envision program for anticipated reductions in greenhouse gases as well as several measures designed to reduce operational energy needs by 59 percent.

By the Numbers



How many landings/takeoffs happened at each airport in 2024?

PHX 485,745
DVT 432,874
GYR 212,081

How many tons of cargo and mail passed through the airport in 2024?

Cargo 324,191 tons
Mail 14,957 tons

How many passengers went through each terminal in 2024?

Terminal 3 12,661,614
Terminal 4 36,741,147
International 2,922,505

How many moving walkways are there in Terminal 4?

26

How many Automated External Defibrillators (AED) are there in airports after being introduced in January 2001?

Over 115 and they save an average three lives per year since the rollout

By the Numbers

How many runways does Sky Harbor operate? **3**
North Runway designated 8/26 is 11,490 feet long and 150 feet wide; field elevation 1,117.9.
Center Runway designated 7L/25R is 10,300 feet long and 150 feet wide; field elevation 1,118.3.
South Runway designated 7R/25L is 7,800 feet long and 150 feet wide; field elevation 1,115.7.



How many works of art are in the Phoenix Airport Museum collection? More than **1,000 works of art** in all media.

When did the airport start collecting art? **In the early 1960s** with purchases made as terminals were constructed.

Where does the airport show the art work? Exhibitions are at PHX, Deer Valley Airport and Goodyear Airport. At Phoenix Sky Harbor International Airport, the collections are throughout the Airport property from the 44th Street PHX Sky Train® Station to the Rental Car Center.

The First of Many—Sky Harbor continues to be a leader in innovation, achieving many recent firsts including:

- In December 2022, Phoenix Sky Harbor became the first airport in the world to offer travelers fully **autonomous vehicle service** as a means of transportation to and from the airport. Travelers can hail a Waymo straight from the terminal curbs, or from either the 24th or 44th St. PHX Sky Train® station.
- In November 2023, Phoenix Sky Harbor International Airport was once again named the top airport in the nation among large airports by the Wall Street Journal. High scores were given for fewest flight cancellations, taxi out time, and rideshare fees, among other factors.



Accessibility

Phoenix Sky Harbor International Airport is one of the most accessible airports in the world for people with physical and hidden disabilities thanks to the advice provided by the Phoenix Mayor's Commission on Disability Issues.

As part of these modifications to ensure the airport's accessibility both terminals have curb cuts; automatic doors; elevators; ramped access to all lobbies and gate areas; designated areas on inner curbs for vehicles with disability plates to load or unload; and wheelchair accessible telephones, automatic teller machines, accessible (family) restrooms with caregiver access and drinking fountains.

There are services which support customers who are blind or have low vision while they travel. Aira provides guidance through a mobile app to assist passengers with a variety of needs, including moving through crowds, avoiding obstacles, finding gates, using self-service kiosks and navigating through Transportation Security Administration checkpoints.

Additionally, Phoenix was among the first and largest cities to commit to joining Dementia Friendly America (DFA). The DFA program focuses on making everyday life easier to navigate for those affected by dementia or another hidden disability. Programs offered at Phoenix Sky Harbor include, the award-winning Dementia Friendly Air Travel Workshop to help caregivers of those with dementia better understand the travel process, and the Compassion Cacti™ Lanyard Program. The special lanyard, worn around the neck, identifies a traveler as a person who experiences dementia, making it easier for airport staff to recognize them and offer assistance. The lanyard also gives travelers the ability to enter new, quiet areas that offer minimal distractions – something that can help avoid the agitation and confusion that can present itself when a person experiencing dementia is away from home.

The airport's innovative initiative involves specific training, and other options that will make it easier and more comfortable for people experiencing dementia – and their families and traveling companions – to travel through the airport.



Furthermore, Phoenix Sky Harbor added a dementia-friendly safe space for people needing to escape the loud and stimulating crowds. The Sensory Room is located inside the Compassion Corner on Level 3 of Terminal 4.

Children or adults with an intellectual or developmental disability, or sensory issue may also visit the Sensory Room for a respite from the sensory overload that they might experience when in the airport environment. This private room is equipped with tables, chairs, puzzles and coloring books.

Sustainability



Being America's Friendliest Airport® means more than making sure our passengers have an exceptional experience at our airport. It is also ensuring that as a business we are protecting the environment and the resources of Arizona for future generations. Phoenix Sky Harbor International Airport's commitment to being future friendly and an industry leader in sustainability has been recognized by the Airports Council International's Airport Carbon Accreditation (ACA) Program. Phoenix Sky Harbor received the Level 4 "Transformation" rating. Phoenix Sky Harbor is currently one of two airports in the U.S. with the Transformation certification, and only one of four airports in the U.S. to have achieved the Level 4/4+ rating tier.

To meet the Level 4 requirements, Phoenix Sky Harbor collaborated with numerous internal and external stakeholders in identifying an ambitious goal of achieving Net Zero Carbon by 2040 for emissions. In alignment with the City's Climate Action Plan (CAP), Phoenix Sky Harbor identified the following CAP targets:

- Reduce carbon emissions from City operations 40% by 2025, compared to 2005
- Achieve carbon-free electricity by 2030
- Increase efficiency of buildings by 30% by 2030, compared to 2012

Since 2010, Phoenix Sky Harbor has reduced annual carbon emissions 39% through energy conservation measures and on-site renewable energy and other initiatives despite growth and expansion. Some examples include reducing electricity usage by 17% and focusing on solar power.

Sustainability



The City of Phoenix Aviation Department continues to strengthen our deep-rooted commitment to sustainability.

Our progress has been a testament to the dedication of our passionate staff and partners. Phoenix Sky Harbor was recognized for its strong commitment to reducing its environmental impact and presented with the Airports Council International—North America 2021 Environmental Achievement Award in the Innovation Category for the Eighth Concourse in Terminal 4.

In 2024, we advanced sustainability with the Green Business Partner Program, encouraging airport partners to adopt eco-friendly initiatives. An Outreach Plan was developed to foster a sustainability culture across all facets of airport operations. A 2-for-1 tree replacement program was introduced to enhance preservation efforts. Additionally, over 11 acres of turf were finalized for conversion to xeriscaping, saving 5 million gallons of water annually and restoring the desert ecosystem.



The City of Phoenix Aviation Department is focused on sustainability.

The Aviation Department created a Sustainability Management Plan with seven key focus areas.

Visit skyharbor.com/sustainability to read our Roadmap to Net Zero Carbon, and learn about our commitment to reaching net zero carbon emissions by 2040.



Recent Enhancements

New Restaurants

An assortment of new restaurants including Popshop and the Coca-Cola Lounge, Garrett Popcorn, and Tacos Chiwas recently opened in Terminal 4, providing passengers with a great variety of beloved local concepts and nationally recognized brands.



Guy Fieri's Phoenix Kitchen + Bar and the SanTan Spirit House are now open. Guy Fieri's features the notable chef's American dishes and SanTan Spirit House, from the locally beloved SanTan Brewing Company, offers a variety of sharable food items and unique spirits.

Innovative Shops

Travelers who want to take some of Arizona home with them, can take advantage of the Arizona Road trip store, featuring Arizona wines and olive oil among other travel essentials.

Additionally, the PGA Tour Fan Shop provides apparel and accessories for golfers and fans. Passengers can work on their swing with a golf simulator of the famous 16th hole at TPC Scottsdale.



Sapphire Lounge by The Club

Travelers can enjoy the Sapphire Lounge by The Club, a stunning 3,500-square-foot space designed for relaxation and work, and open to all travelers, regardless of airline.

A retrofitted Airstream food truck, featuring a curated local menu from Phoenix favorite The Larder & The Delta creates an extraordinary dining experience.

Continued Growth

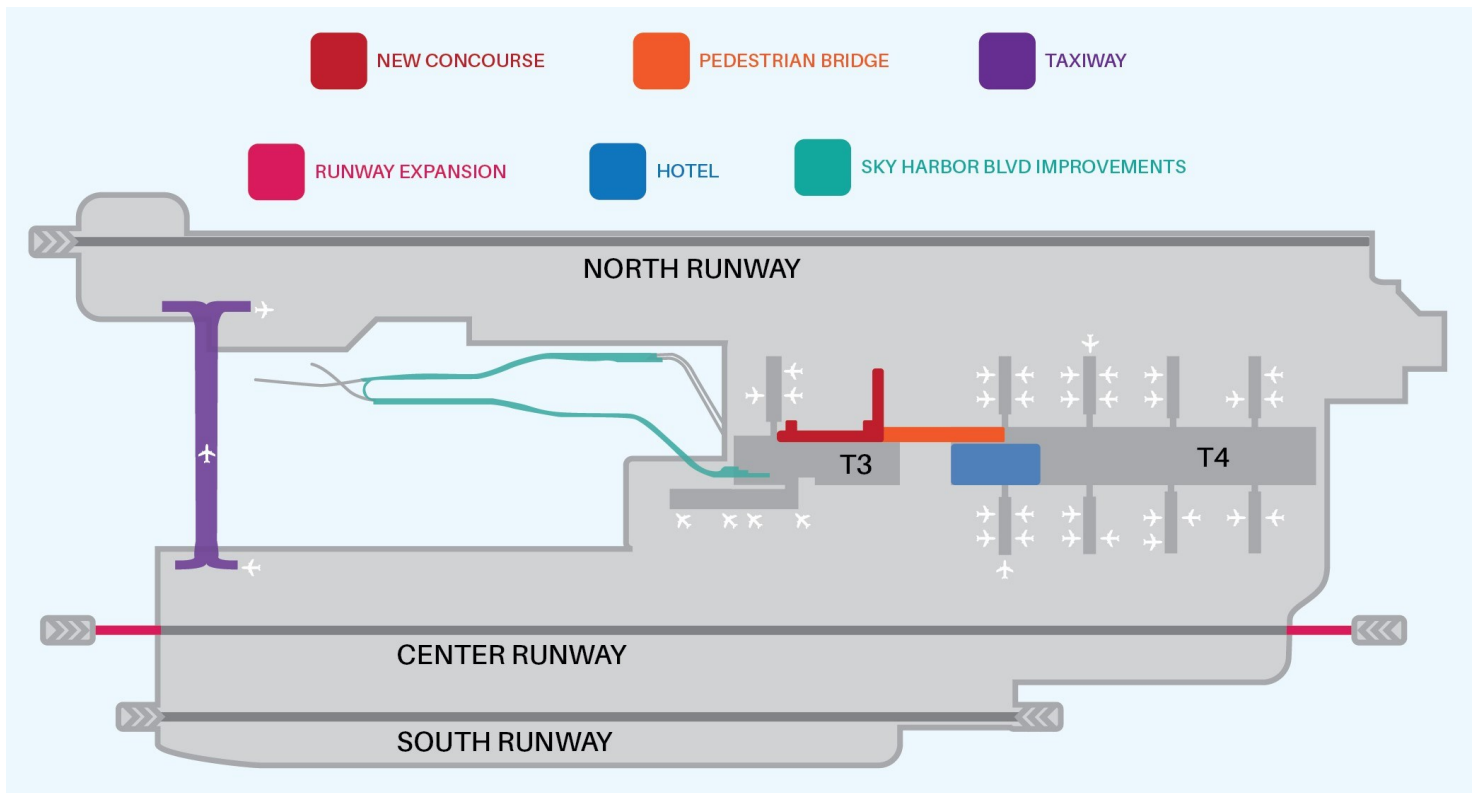
Comprehensive Asset Management Plan (CAMP)

Our customers expect America's Friendliest Airport® to provide availability for all types of air transportation, have comfortable terminals with a variety of amenities and services, and offer easy access on the roadways.

To accomplish these goals, in 2019, Phoenix Sky Harbor developed a 20-year plan that would provide a roadmap for meeting future demand. In 2022, the plan was updated, and near-term goals were identified:

- Improve airfield efficiency with a new north/south taxiway on the west side of the Airport.
- Move cargo operations to make room for the new taxiway.
- Connect Terminals 3 and 4 with a post-security walkway.
- Add a second north concourse to Terminal 3 and renovate select areas of Terminal 4 to provide more comfortable and operable spaces.
- Build more gates to provide availability to the airlines.
- Adjust the Airport's roadways to increase traffic flow and security as well as improve access to and from the freeway system.
- Lengthen the center runway to satisfy the increased need for a longer departure runway.
- Explore the feasibility of a high-end hotel in the terminal core.

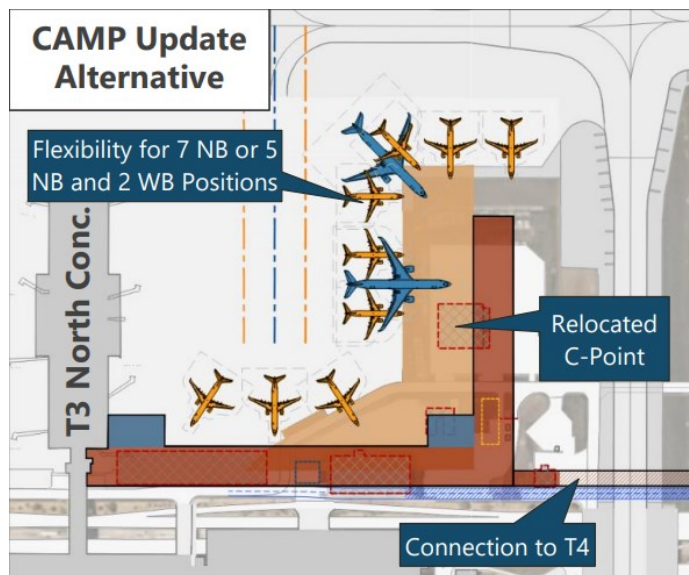
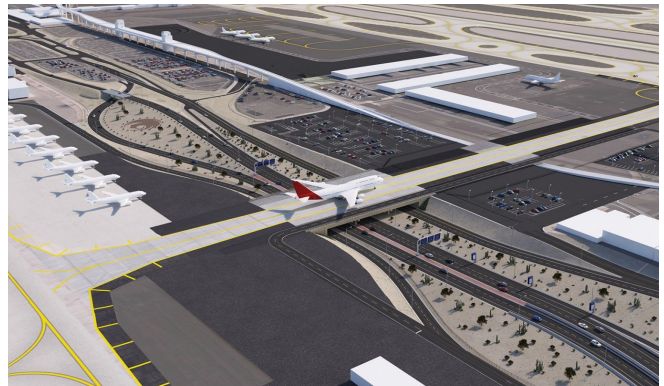
No local tax dollars would be used for these projects. All projects would be paid for through grants, airport revenues, facility charges and bonds, and each individual project would be required to go through a City Council approval process and finance plan.



Coming Up

Taxiway U

Construction is ongoing on the new 2,000-foot taxiway. This new infrastructure will bridge the north and south airfields on the west end of the airport, allowing for better aircraft flow and streamlined airfield operations. Work will include major utility relocation, west airport roadway reconfiguration, and modifications to existing airport facilities. The project is anticipated to be completed in mid-2027. View more info [on our site](#).



Second North Concourse

Terminal 3 will have a second north concourse (T3N2) with flexibility to serve airlines in both terminals. The concourse concepts provide six or seven narrowbody aircraft (NB) parking positions with the ability to park one widebody aircraft (WB) or two narrowbody aircraft at two locations. This will provide flexibility to serve a changing fleet mix, accommodating more widebody domestic aircraft to serve the Airport. Access to Terminal 4 will be made especially easier with the addition of a post-security passenger connection bridge between the terminals. Construction on T3N2 began in April 2025. View more info [on our website](#).

New Terminal

A future terminal on the west side of the airport has been part of Phoenix Sky Harbor's long-range Comprehensive Asset Management Plan. With a continued increase in passenger traffic and larger aircraft flying into Phoenix Sky Harbor, additional capacity will be needed. The new terminal will be built where the former Terminals 1 and 2 were located. This will be the first new terminal construction since Terminal 4 opened in 1990. Details of the terminal design are still underway. Planning and environmental preparation will take several years, and construction is not anticipated to begin until after 2030.



Deer Valley Airport



Phoenix Deer Valley Airport (DVT) can accommodate all segments of civil aviation, with the exception of scheduled airline service. Services offered include fuel, avionics, maintenance, parts, flight training, and aircraft sales.

Cutter Aviation recently added a new hangar complex at DVT that offers 60,000 square feet of corporate aircraft hangar space.

- A 100,000+ square foot corporate aircraft hangar campus constructed by a company called Sky Harbour opened in 2025.
- In January 2024, the Tucson native Barrio Brewing Company opened a restaurant at Deer Valley Airport to the excitement of the local community. The space includes seating for up to 200 people with two party rooms.
- DVT was the 13th busiest airport in the world for takeoffs and landings according to the 2024 world airport traffic rankings released by the Airports Council International - ACI World.



Goodyear Airport



Phoenix Goodyear Airport (GYR) is a general aviation airport supporting significant maintenance, repair, and overhaul (MRO) of large aircraft, airline flight training, and corporate aircraft. Goodyear Airport is owned by the City of Phoenix, but is located inside the City of Goodyear limits.

In 2016, Lux Aire Jet Centers, the GYR fixed base operator, completed a new state-of-the-art \$10 million project, including three large corporate hangars, and a modern office space supporting corporate aviation.

Additionally, GYR is home to AerSale, a large MRO facility, performing heavy maintenance and storage for aircraft up to a B-777. In December 2021, United Airlines opened the United Aviate Academy (UAA) flight training school at GYR. UAA is expanding, taking delivery of additional Cirrus aircraft and will train nearly 500 pilots a year.

GYR has invested more than \$24 million in capital projects the last seven years including repaving the runway and taxiway and constructing T hangar aprons. Over the next five years, the airport Capital Improvement Plan has identified about \$45 million in infrastructure improvements.

