



**PHOENIX SKY HARBOR  
INTERNATIONAL AIRPORT**



**Monthly Commercial Ground Transportation Report  
July 2025**

## **TABLE OF CONTENTS**

A - Events

B - Section 1: Revenue GT Trips

1- All Ground Transportation Trips

Taxi

Rideshare

Autonomous

Pearranged

Off-Airport Parking

Hotel/Motel

Intercity

Charter Bus

Courtesy

C - Section 2: Non-Revenue GT Trips

PHX Sky Train® Ridership

## Events Impacting Number of Trips

Date	Event	Notes
Jan-11	BCS Championship Game in Glendale	Auburn vs Oregon, busiest rental car event ever for Phoenix (Bigger than SuperBowl)
Jul-11	MLB All Star Game	Held downtown at Chase MLB All Star is a week long event.
Apr-13	PHX Sky Train Stage 1 open	
Oct-13	TNCs arrived in Phoenix	Uber & Lyft operating in Phoenix
Jan-14	AVI System Change	Trips now calculated by AVI system
Jun-14	Ended Contracted Limo Service	
Dec-14	PHX Sky Train Stage 1A open	PHX Sky Train service provided to Terminal 3 (and Terminal 2 via walking path)
Jan-15	Change to AVI	Have started calculating trip fees for Supershuttle...will be the same calculation for all vehicles. They now receive 4 entry & 4 exits per trip, has caused a reduction in the number of trips.
Feb-15	SuperBowl	SuperBowl impacted number of fares during 2 week event.
Jan-16	BCS Championship Game	Clemson vs. Alabama, RCC had high pax counts.
Jun-16	Implement New GT Policy	Transportation Network Companies began service, Charter Operators required to more completely report trips through AVI, has caused an increase in the number of trips.
Dec-16	New Trip Logic	Implement new trip logic for calculation of trips for all AVI users (excluding taxi, trip applied upon entrance to C-Lot). Begin tracking providers for only pick-ups, old logic tracked all airport access.
Jan-17	Begin Phased Trip Fees	Begin the three-year phase in of trip fees to providers permitted prior to 6/18/16.
Mar-17	NCAA Final Four	Phoenix hosted the NCAA Final Four and associated events from March 24 - 27; the event increased overall GT traffic for the month.
May-18	New Taxi Contract	New taxi contract w/ PHX Sky Harbor Airport effective 5/1/18
Dec-19	SuperShuttle Ends Service	SuperShuttle ended service effective 12/31/19 at PHX Sky Harbor Airport.
15-Mar-20	Health Emergency - COVID-19	Health crisis due to COVID-19 affecting global economy.
May-20	New GT Trip Policy	New trip policy effective 5/1/20 to implement new trip fees and include drop-off fees.
Oct-22	Autonomous Service Begins	Waymo begins limited service at PHX Sky Harbor Airport
Dec-22	PHX Sky Train Stage 2 opens	PHX Sky Train service to Rental Car Center begins 12/20/22, no RCC bus service thereafter.
Feb-23	Superbowl LVII	Increased trips and passenger activity due to Superbowl.
Apr-24	NCAA Final Four	NCAA Final Four and events increased overall GT traffic for the month.
Aug-24	Full Autonomous Service	Waymo provides full terminal service at PHX Sky Harbor Airport

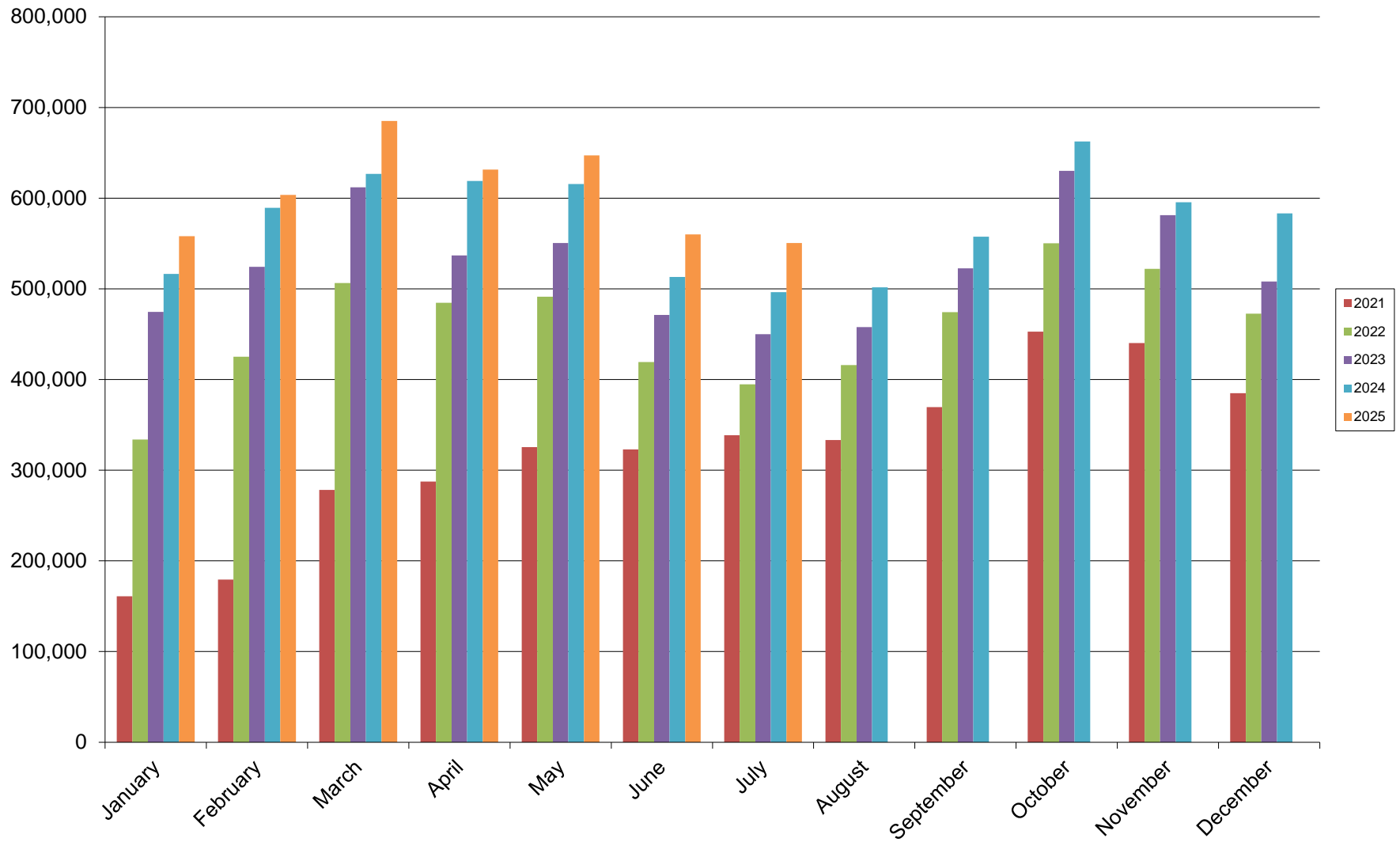
## SECTION 1: REVENUE GT TRIPS

\*Figures reported in trips using AVI and GPS trip-tracking

## Total Monthly Ground Transportation Trips

<u>Month</u>	<u>2021</u>	<u>2022</u>	<u>2023</u>	<u>2024</u>	<u>2025</u>
January	160,975	333,847	474,693	516,401	558,187
February	179,500	425,240	524,244	589,392	603,725
March	278,381	506,398	612,065	626,751	685,070
April	287,509	484,716	536,904	619,046	631,407
May	325,393	491,304	550,637	615,612	647,074
June	323,074	419,283	471,153	513,130	560,063
July	338,538	394,728	450,118	496,325	550,510
August	333,254	416,032	457,886	501,769	
September	369,659	474,405	522,717	557,601	
October	452,808	550,146	630,206	662,400	
November	440,334	522,184	581,292	595,471	
December	385,046	472,628	507,983	583,187	
<b>TOTAL</b>	<b>3,874,471</b>	<b>5,490,911</b>	<b>6,319,898</b>	<b>6,877,085</b>	<b>4,236,036</b>
*Trips include autonomous service effective October 2022					

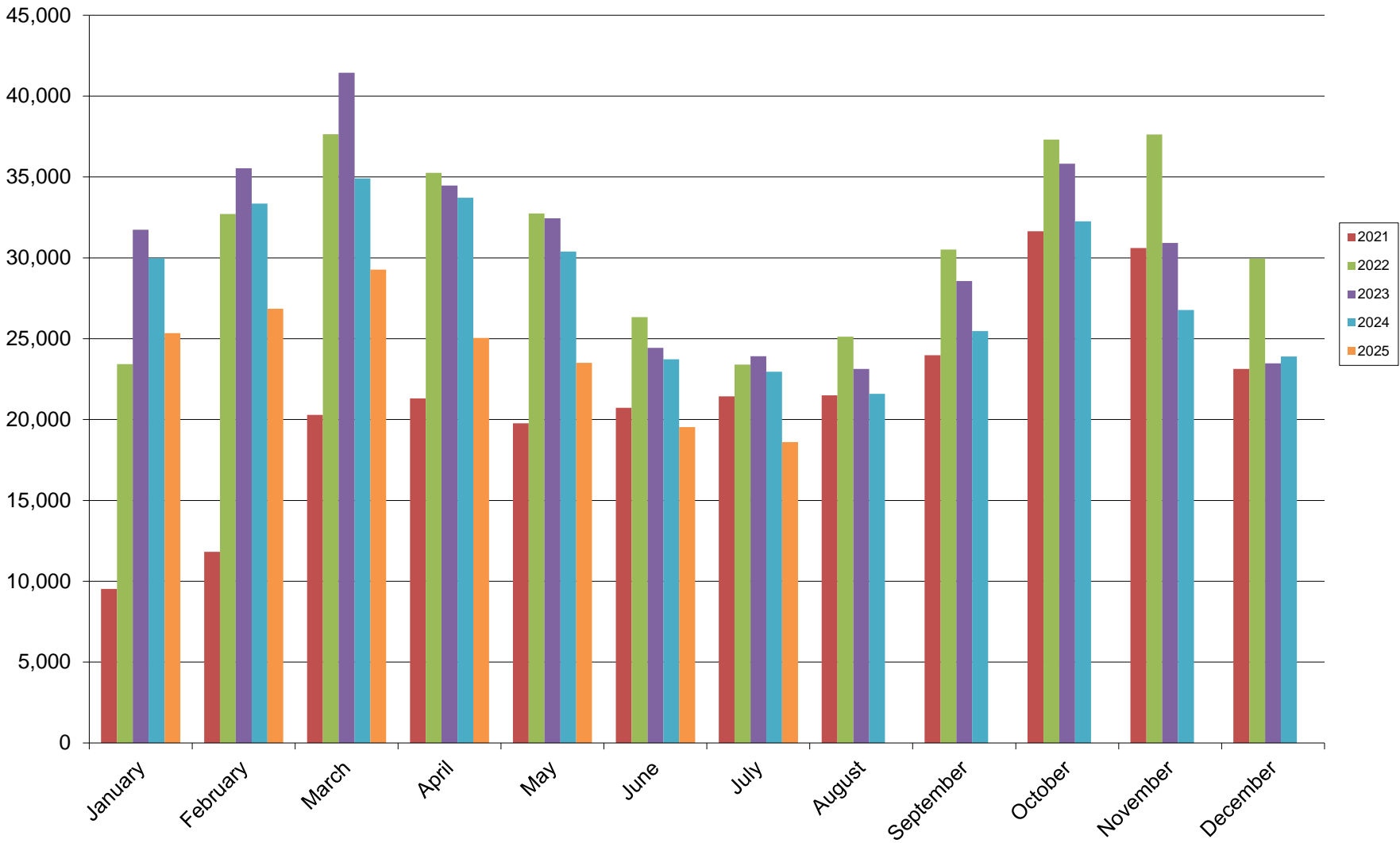
## Total Monthly Ground Transportation Trips



# Taxi Trips

<u>Month</u>	<u>2021</u>	<u>2022</u>	<u>2023</u>	<u>2024</u>	<u>2025</u>
January	9,533	23,435	31,738	29,977	25,340
February	11,823	32,712	35,544	33,359	26,847
March	20,285	37,651	41,446	34,905	29,275
April	21,313	35,254	34,467	33,720	25,051
May	19,768	32,735	32,437	30,389	23,509
June	20,730	26,337	24,427	23,725	19,532
July	21,427	23,399	23,923	22,951	18,611
August	21,491	25,120	23,135	21,585	
September	23,973	30,518	28,570	25,476	
October	31,648	37,313	35,820	32,260	
November	30,605	37,620	30,924	26,777	
December	23,129	29,964	23,476	23,898	
<b>TOTAL</b>	<b>255,725</b>	<b>372,058</b>	<b>365,907</b>	<b>339,022</b>	<b>168,165</b>

Taxi Trips

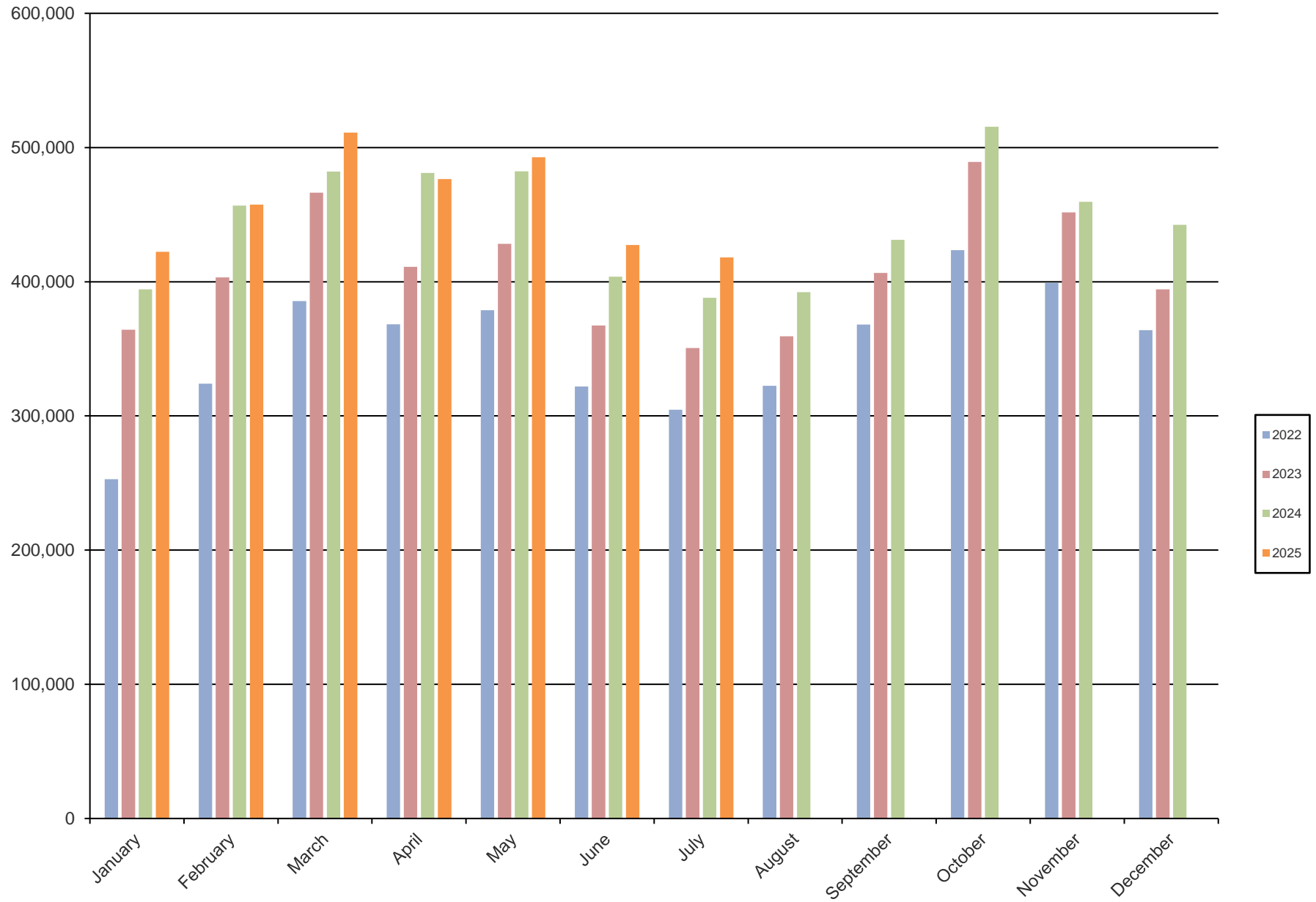




# RideshareTrips

<u>Month</u>	<u>2022</u>	<u>2023</u>	<u>2024</u>	<u>2025</u>		
January	252,837	364,227	394,364	422,344		
February	324,082	403,207	456,772	457,534		
March	385,521	466,437	482,020	511,110		
April	368,271	411,032	480,969	476,430		
May	378,781	428,278	482,203	492,802		
June	321,932	367,389	403,829	427,325		
July	304,592	350,678	387,972	418,105		
August	322,473	359,422	392,286			
September	368,008	406,535	431,190			
October	423,458	489,360	515,495			
November	399,181	451,714	459,477			
December	363,934	394,398	442,344			
<b>TOTAL</b>	<b>4,213,070</b>	<b>4,892,677</b>	<b>5,328,921</b>	<b>3,205,650</b>		
*Rideshare data is based on monthly GPS trip tracking reports submitted by TNC providers						

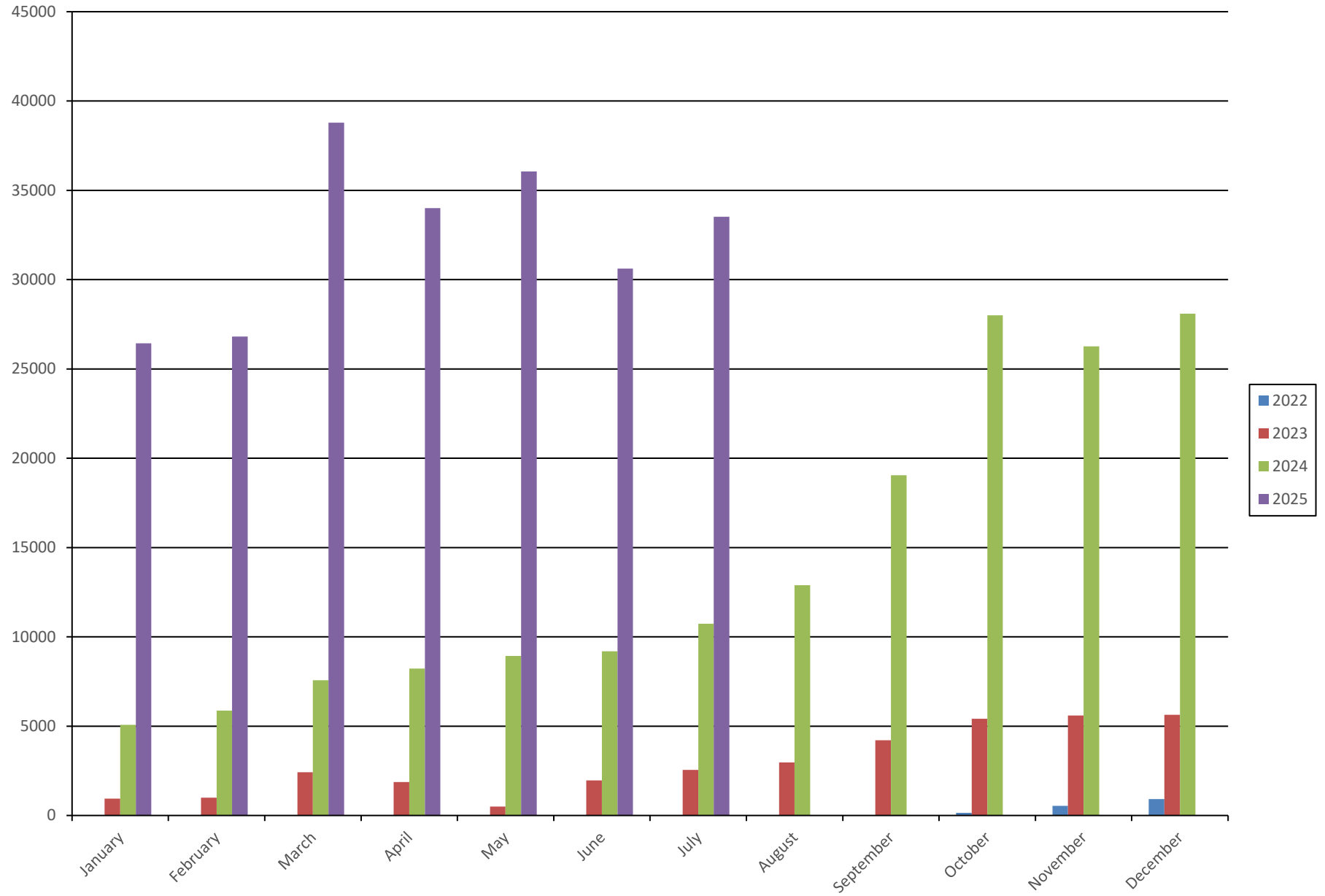
## Rideshare Trips



## Autonomous Trips

<b><u>Month</u></b>	<b><u>2022</u></b>	<b><u>2023</u></b>	<b><u>2024</u></b>	<b><u>2025</u></b>
January	-	942	5,071	26,436
February	-	1,000	5,875	26,809
March	-	2,416	7,566	38,782
April	-	1,869	8,224	34,003
May	-	504	8,928	36,057
June	-	1,962	9,192	30,613
July	-	2,555	10,731	33,516
August	-	2,966	12,897	
September	-	4,205	19,043	
October	151	5,414	28,009	
November	542	5,599	26,270	
December	916	5,638	28,098	
<b>TOTAL</b>	<b>1,609</b>	<b>35,070</b>	<b>169,904</b>	<b>226,216</b>

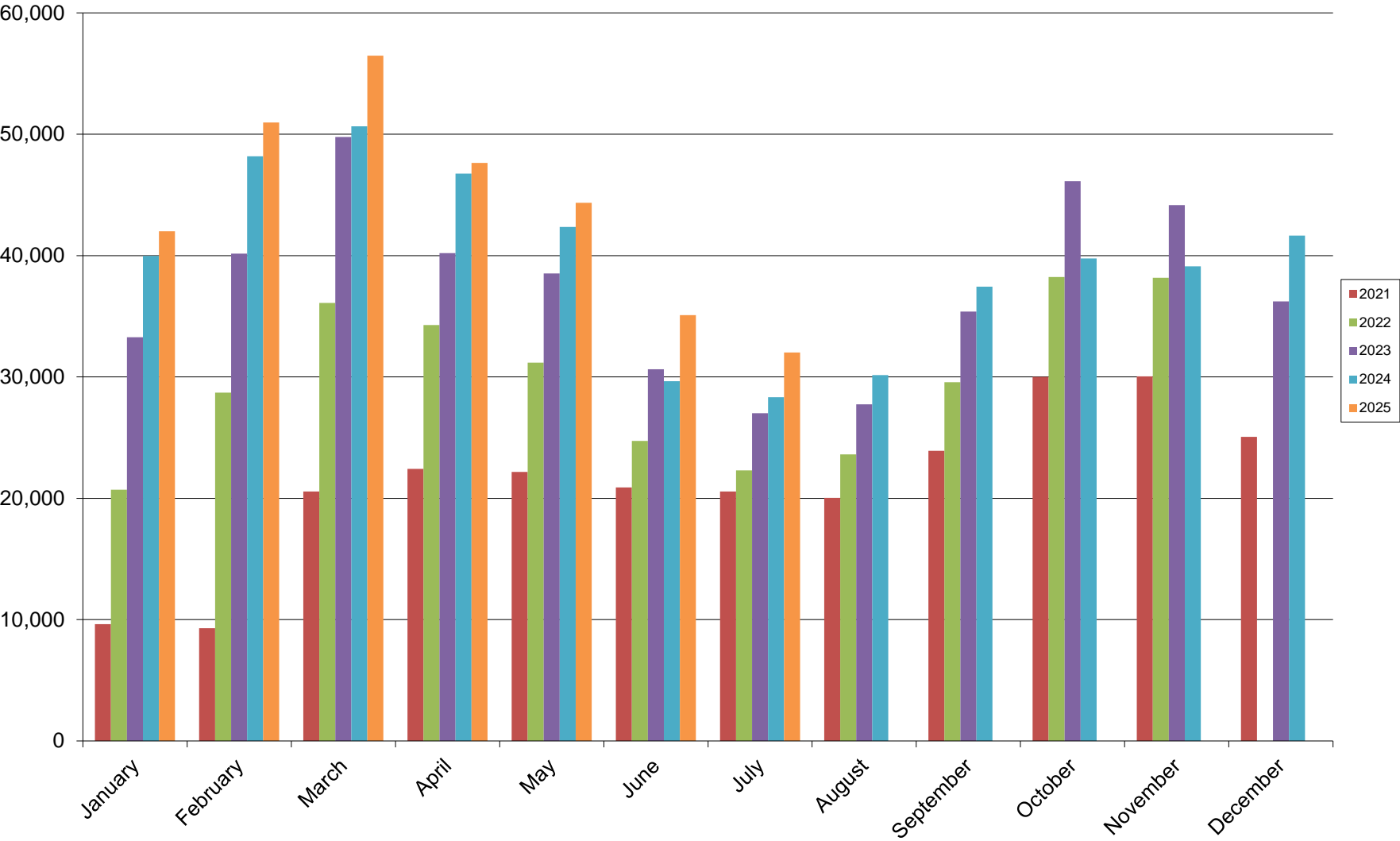
## Autonomous Trips



## Prearranged Trips

<b><u>Month</u></b>	<b><u>2021</u></b>	<b><u>2022</u></b>	<b><u>2023</u></b>	<b><u>2024</u></b>	<b><u>2025</u></b>
January	9,635	20,714	33,261	39,964	42,003
February	9,290	28,709	40,164	48,190	50,969
March	20,565	36,101	49,781	50,652	56,476
April	22,424	34,272	40,201	46,759	47,638
May	22,162	31,173	38,516	42,348	44,351
June	20,891	24,725	30,638	29,647	35,087
July	20,566	22,299	27,000	28,327	32,013
August	20,024	23,608	27,736	30,153	
September	23,901	29,569	35,390	37,431	
October	30,009	38,227	46,128	39,752	
November	30,041	38,176	44,162	39,121	
December	25,054	30,485	36,231	41,640	
<b>TOTAL</b>	<b>254,562</b>	<b>358,058</b>	<b>449,208</b>	<b>473,984</b>	<b>308,537</b>

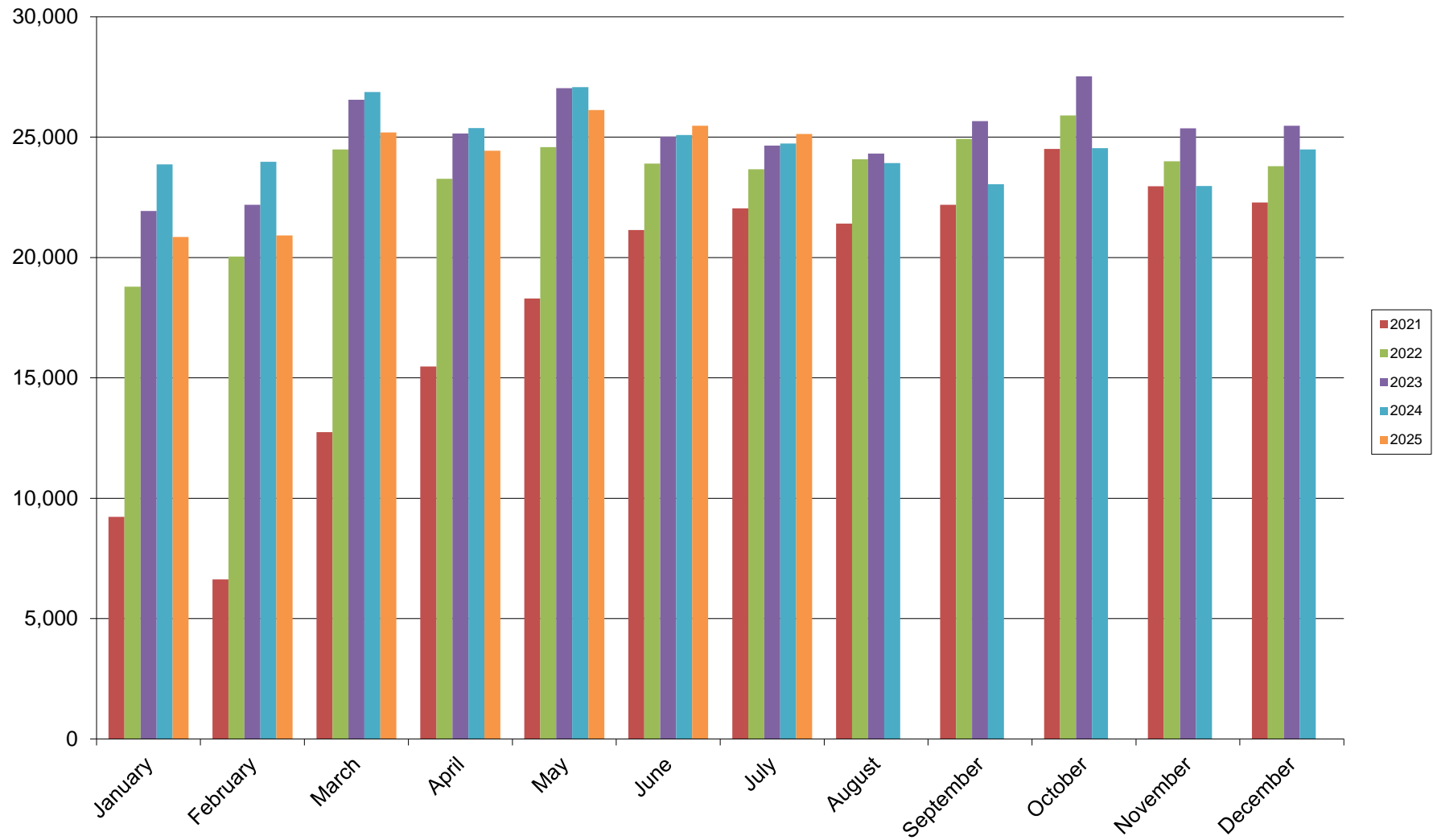
P rearranged Trips



## Off-Airport Parking Trips

<b><u>Month</u></b>	<b><u>2021</u></b>	<b><u>2022</u></b>	<b><u>2023</u></b>	<b><u>2024</u></b>	<b><u>2025</u></b>
January	9,227	18,792	21,938	23,865	20,856
February	6,627	20,039	22,187	23,981	20,920
March	12,746	24,490	26,555	26,875	25,199
April	15,471	23,275	25,157	25,376	24,438
May	18,295	24,590	27,035	27,081	26,124
June	21,138	23,906	25,022	25,091	25,469
July	22,038	23,671	24,655	24,734	25,128
August	21,410	24,088	24,315	23,920	
September	22,185	24,928	25,668	23,044	
October	24,511	25,901	27,528	24,538	
November	22,955	24,002	25,366	22,973	
December	22,283	23,799	25,478	24,490	
<b>TOTAL</b>	<b>218,886</b>	<b>281,481</b>	<b>300,904</b>	<b>295,968</b>	<b>168,134</b>

## Off-Airport Parking Trips

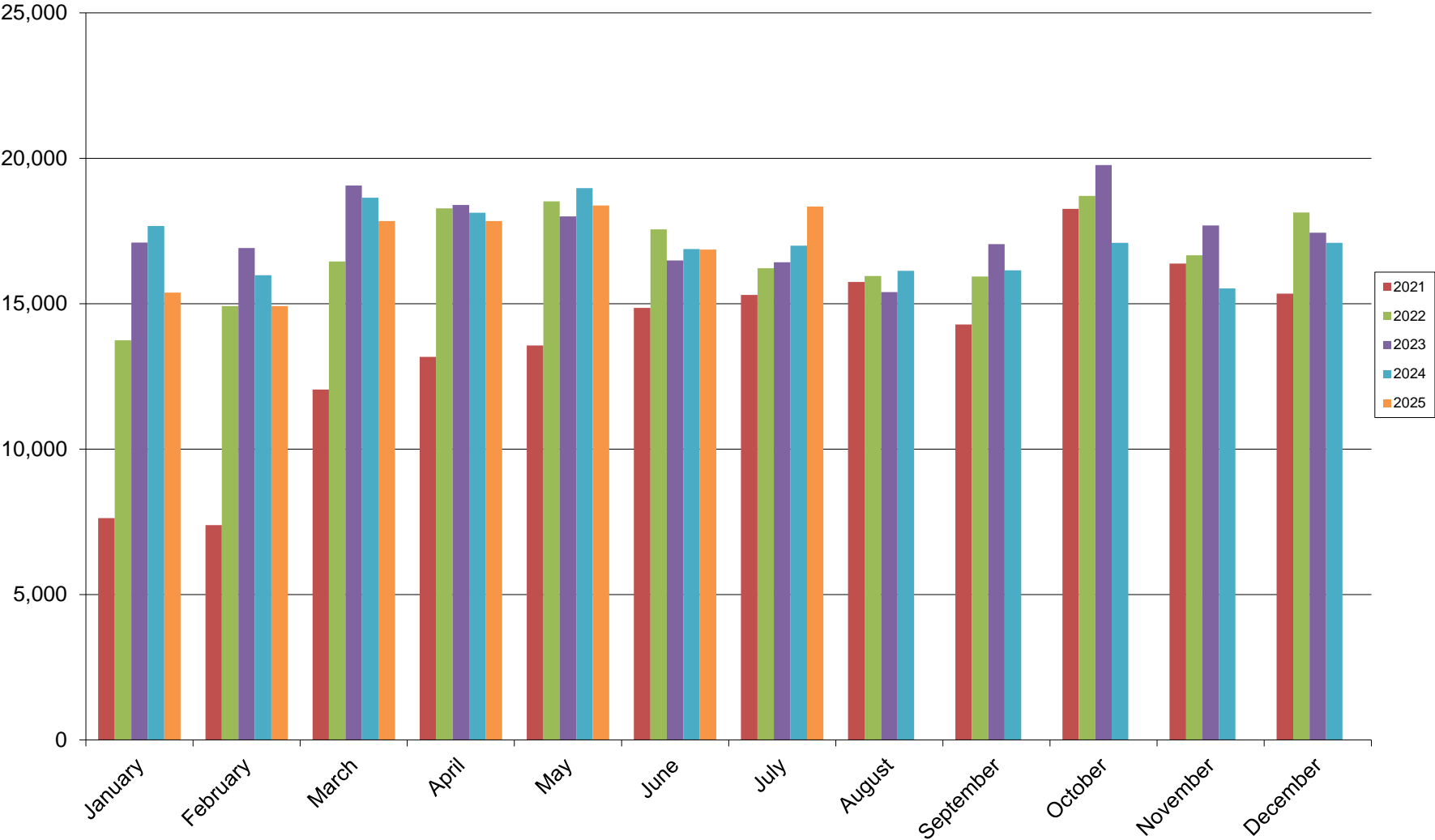




## Hotel/Motel Trips

<u>Month</u>	<u>2021</u>	<u>2022</u>	<u>2023</u>	<u>2024</u>	<u>2025</u>
January	7,628	13,743	17,098	17,673	15,384
February	7,387	14,916	16,912	15,982	14,915
March	12,044	16,450	19,060	18,646	17,841
April	13,168	18,278	18,390	18,127	17,844
May	13,560	18,518	17,998	18,974	18,377
June	14,856	17,553	16,490	16,876	16,860
July	15,301	16,217	16,424	16,998	18,336
August	15,746	15,952	15,395	16,132	
September	14,284	15,936	17,049	16,149	
October	18,261	18,709	19,762	17,096	
November	16,376	16,668	17,691	15,525	
December	15,343	18,135	17,442	17,093	
<b>TOTAL</b>	<b>163,954</b>	<b>201,075</b>	<b>209,711</b>	<b>205,271</b>	<b>119,557</b>

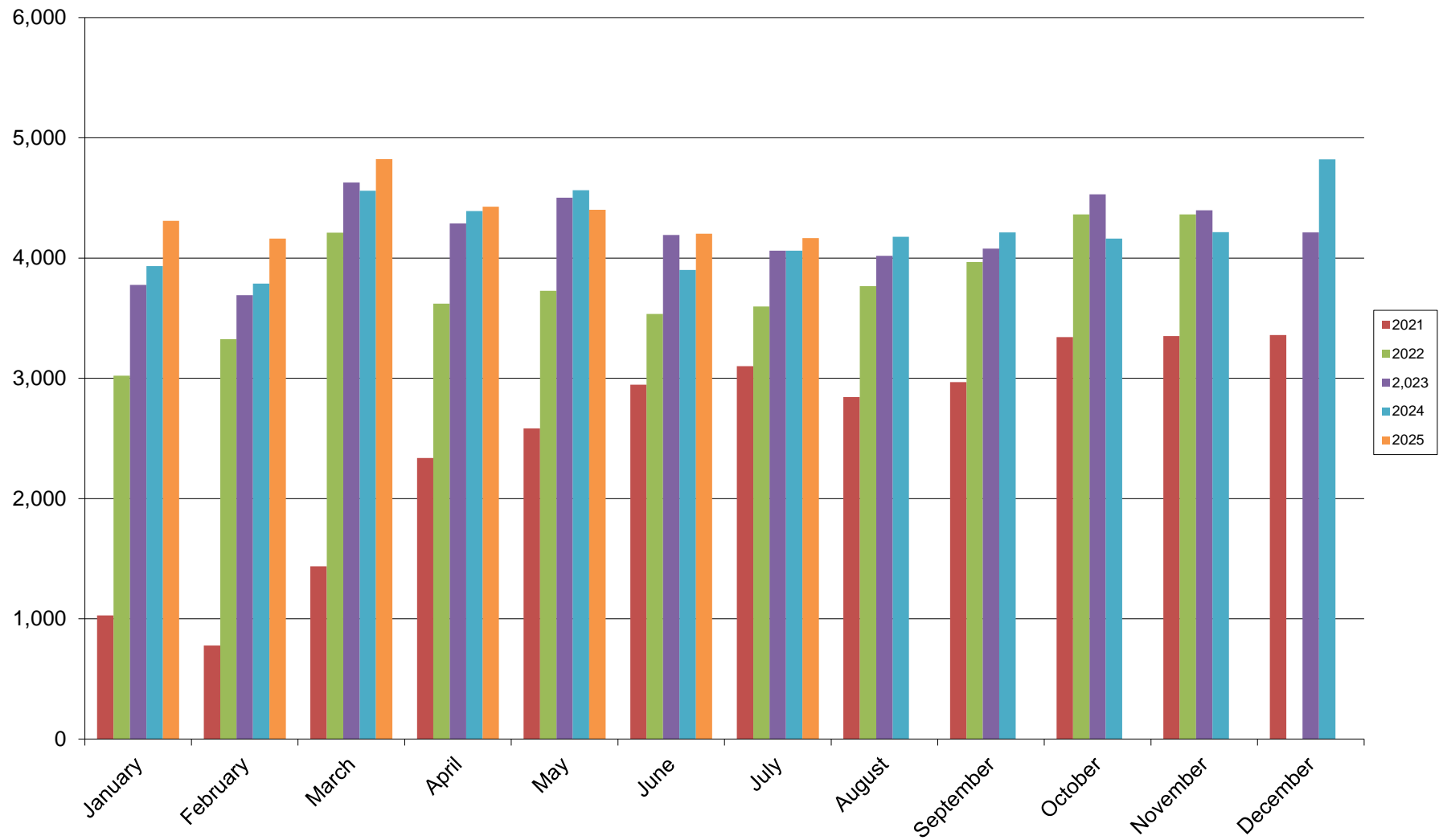
Hotel/Motel Trips



## Intercity Trips

<u>Month</u>	<u>2021</u>	<u>2022</u>	<u>2,023</u>	<u>2024</u>	<u>2025</u>
January	1,027	3,021	3,778	3,934	4,310
February	778	3,326	3,691	3,788	4,161
March	1,436	4,212	4,628	4,560	4,823
April	2,338	3,620	4,288	4,391	4,427
May	2,583	3,728	4,502	4,564	4,401
June	2,946	3,536	4,193	3,902	4,203
July	3,102	3,598	4,061	4,062	4,166
August	2,845	3,766	4,019	4,178	
September	2,969	3,968	4,078	4,213	
October	3,343	4,363	4,531	4,162	
November	3,351	4,363	4,397	4,215	
December	3,359	4,190	4,213	4,820	
<b>TOTAL</b>	<b>30,077</b>	<b>45,691</b>	<b>50,379</b>	<b>50,789</b>	<b>30,491</b>

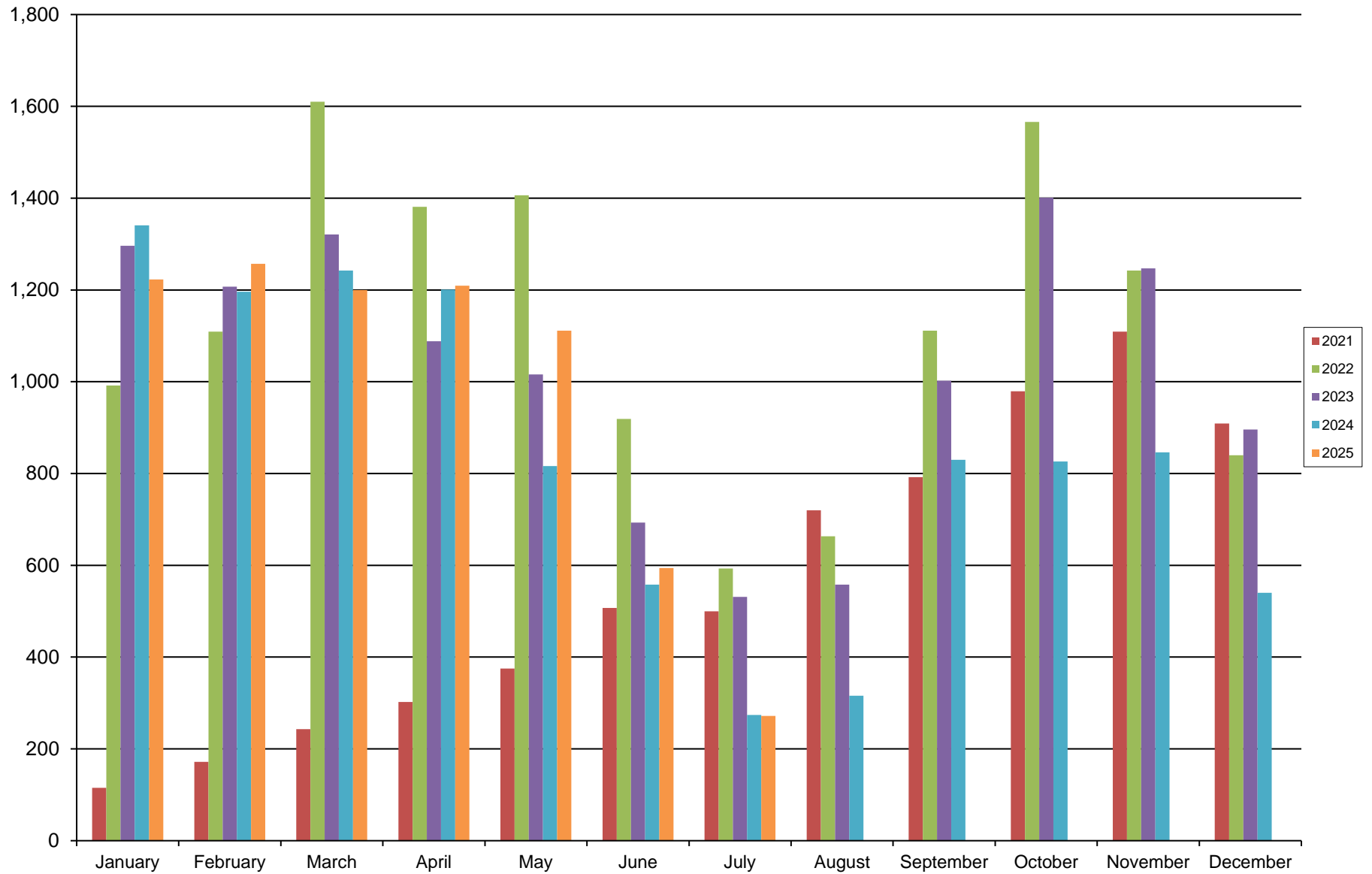
## Intercity Trips



# Charter Trips

<u>Month</u>	<u>2021</u>	<u>2022</u>	<u>2023</u>	<u>2024</u>	<u>2025</u>
January	115	992	1,296	1,341	1,223
February	172	1,109	1,207	1,196	1,257
March	243	1,610	1,321	1,242	1,200
April	302	1,381	1,088	1,201	1,209
May	375	1,406	1,016	816	1,111
June	507	919	693	558	594
July	500	593	531	274	272
August	720	663	558	316	
September	792	1,111	1,002	830	
October	979	1,566	1,401	826	
November	1,109	1,242	1,247	846	
December	909	840	896	540	
<b>TOTAL</b>	<b>6,723</b>	<b>13,432</b>	<b>12,256</b>	<b>9,986</b>	<b>6,866</b>

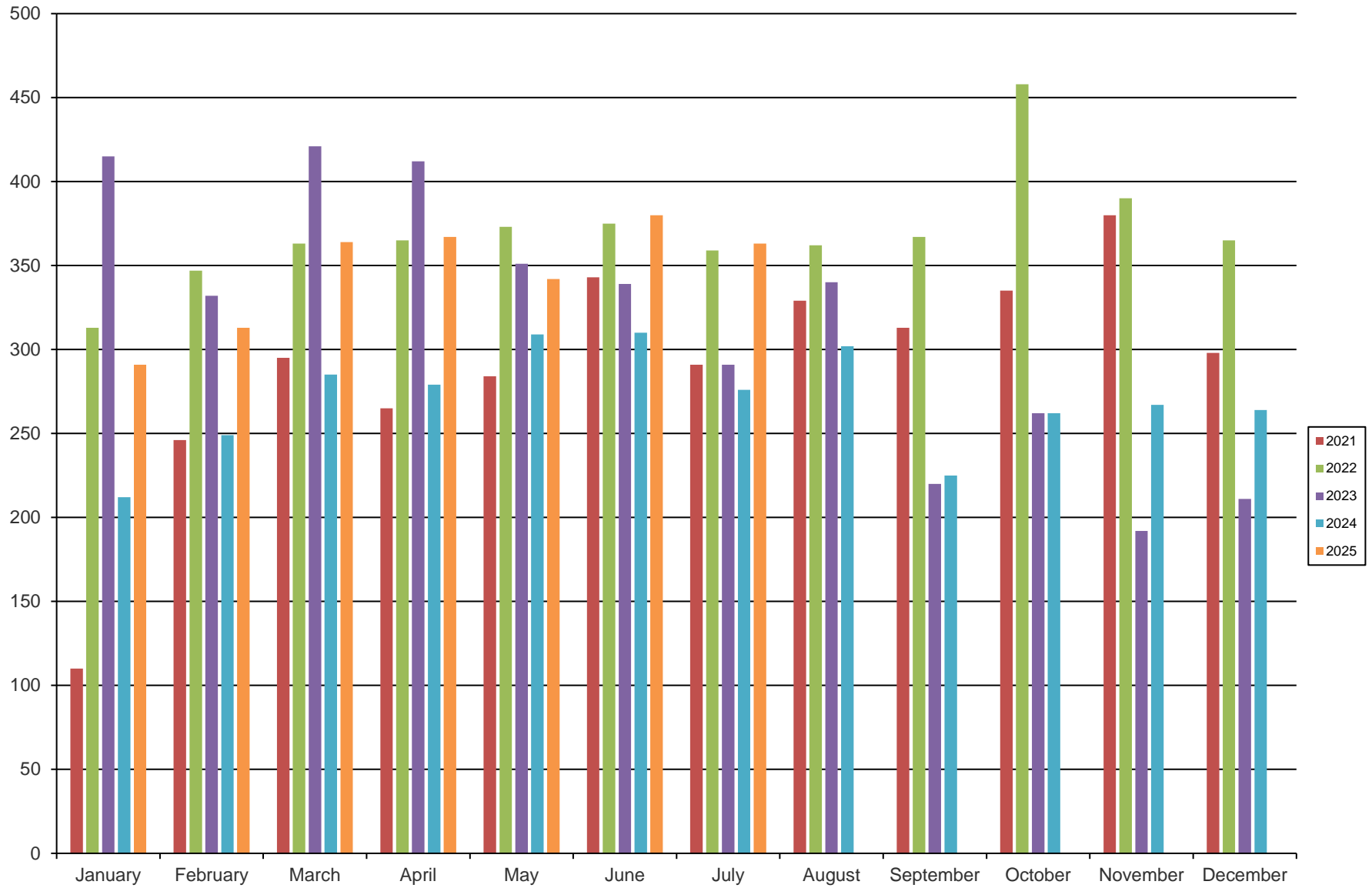
## Charter Trips



# Courtesy Trips

<u>Month</u>	<u>2021</u>	<u>2022</u>	<u>2023</u>	<u>2024</u>	<u>2025</u>
January	110	313	415	212	291
February	246	347	332	249	313
March	295	363	421	285	364
April	265	365	412	279	367
May	284	373	351	309	342
June	343	375	339	310	380
July	291	359	291	276	363
August	329	362	340	302	
September	313	367	220	225	
October	335	458	262	262	
November	380	390	192	267	
December	298	365	211	264	
<b>TOTAL</b>	<b>3,489</b>	<b>4,437</b>	<b>3,786</b>	<b>3240</b>	<b>2,420</b>

## Courtesy Trips





## SECTION 2: NON-REVENUE GT TRIPS

\*Figures reported in Passenger Ridership

# PHX Sky Train® Ridership

<u>Month</u>	<u>2021</u>	<u>2022</u>	<u>2023</u>	<u>2024</u>	<u>2025</u>
January	140,681	331,226	1,081,354	1,104,178	1,193,171
February	122,833	347,341	1,141,195	1,215,552	1,263,949
March	273,412	449,436	1,482,788	1,596,380	1,619,052
April	263,134	330,415	1,299,290	1,416,625	1,417,884
May	319,050	409,864	1,180,829	1,310,443	1,280,326
June	346,594	406,568	998,519	1,077,985	1,045,129
July	413,704	415,175	912,464	1,004,659	952,396
August	351,223	381,237	898,579	973,932	
September	351,128	404,545	1,004,298	1,049,445	
October	382,881	359,095	1,207,267	1,296,269	
November	390,206	369,735	1,206,609	1,301,221	
December	391,309	705,064	1,144,613	1,241,050	
<b>TOTAL</b>	<b>3,746,155</b>	<b>4,909,701</b>	<b>13,557,805</b>	<b>14,587,739</b>	<b>8,771,907</b>

# PHX Sky Train® Ridership

