

PHX DVT GYR

 CITY OF PHOENIX AVIATION DEPARTMENT

Monthly Noise Report

June 2016

Contents

- Page 2 – Introduction/Summary
- Page 3 – Noise Complaints
- Page 4 – Airport Operation Totals & Noise Monitoring Sites
- Page 5 – Fly Friendly Procedures
- Page 7 – “Early Turns” Grand Avenue

Introduction/Summary

The City of Phoenix Aviation Department Airspace and Noise Section collects aircraft noise monitoring and flight operations data to provide the community with up-to-date information concerning aircraft noise exposure. Additionally, staff addresses noise concerns received from residents through either the noise hotline (844-244-7430) or the electronic complaint forms available on the Phoenix Sky Harbor International Airport's (PHX) webpage:

<https://www.skyharbor.com/FlightPaths/FileAConcernContactUs> (PublicVue, Webform, or Mobile App).

The following report provides a summary of the data collected for the preceding month. Each component of the report is intended to show observable trends in operation counts, flight direction, complaints, and adherence to noise abatement procedures.

Staff has received an increased amount of complaints regarding "early turns". Upon further investigation, these flights were primarily go-arounds or missed approaches. Staff continues to collect data to analyze trends, as well as compare the amount of these procedures which occurred pre and post RNAV implementation. Staff will begin including this data next month.

Summary:

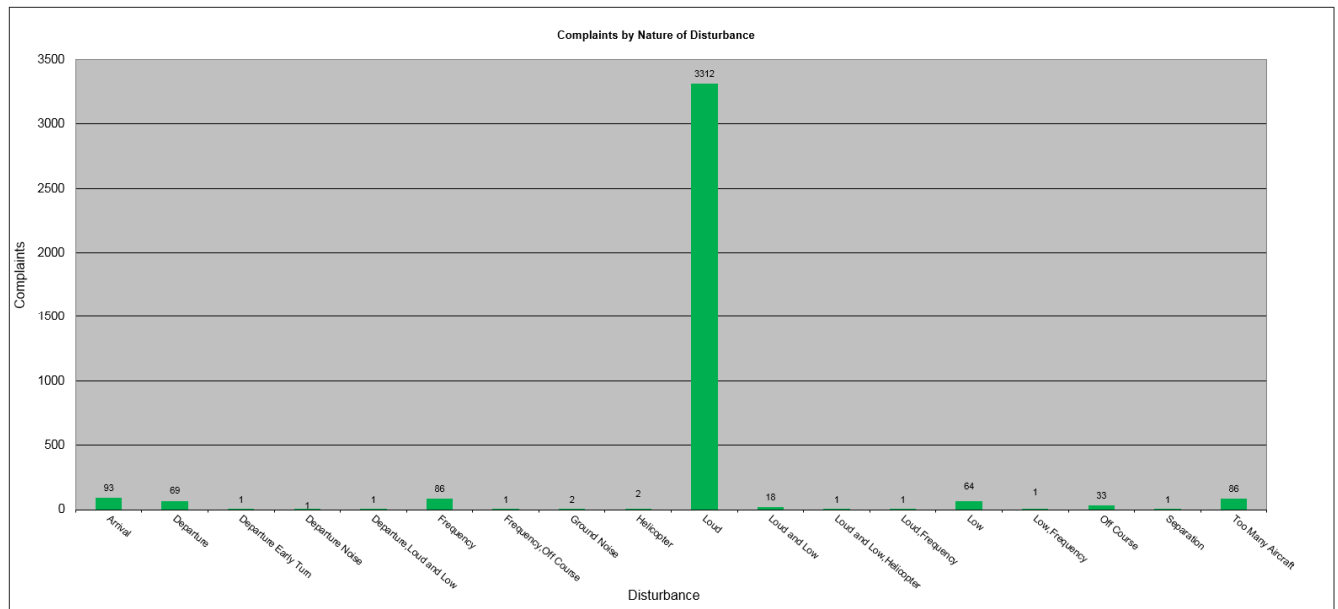
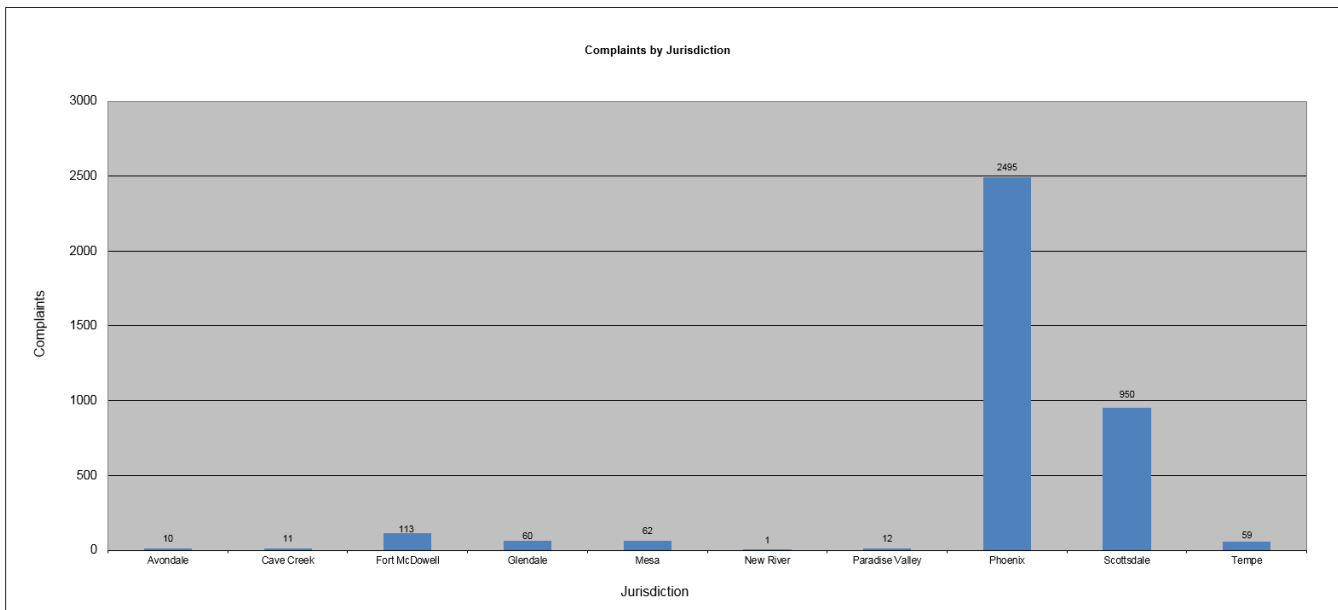
- The Airspace and Noise Section received 3,637 complaints from 154 households with regard to PHX, DVT, & GYR airports for the month of June 2016, and 136 noise complaints for aircraft arriving or departing other airports around Phoenix.
- PHX had 36,966 operations in June 2016. This is a 1.3% decrease from May 2016. Phoenix Deer Valley Airport (DVT) had 26,730 operations in June 2016. This is a 15.6% decrease from May 2016. Phoenix Goodyear Airport (GYR) had 10,408 operations in June 2016. This is a 0.1% decrease from May 2016.
- The 4 DME Compliance Rate for June 2016 was 99.68%.
- PHX operated 59.92% westerly and 40.08% easterly in the month of June 2016.

June 2016 Noise Complaints

Complaints: Many factors contribute to the amount of complaints received each month and by how many people. Complaint totals vary due to factors ranging from one unusual flight event that generates multiple complaints from a large group of people, a bad weather day or change in the weather, or a new homeowner that did not notice the flight paths before they purchased their home.

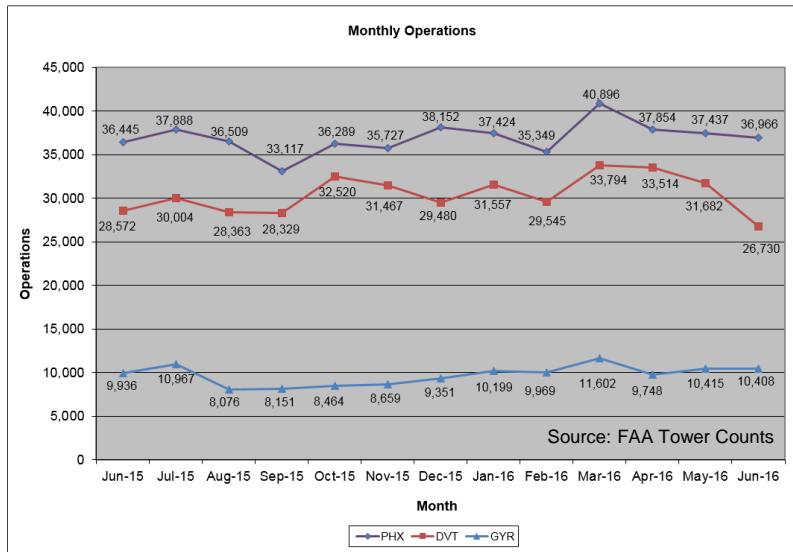
Complaint Statistics

	Jun-15			Jun-16	
	Households	Complaints		Households	Complaints
PHX- Sky Harbor	226	2,445		151	3,574
DVT- Deer Valley	15	79		3	63
GYR- Goodyear	3	4		0	0
Totals	244	2,528		154	3,637



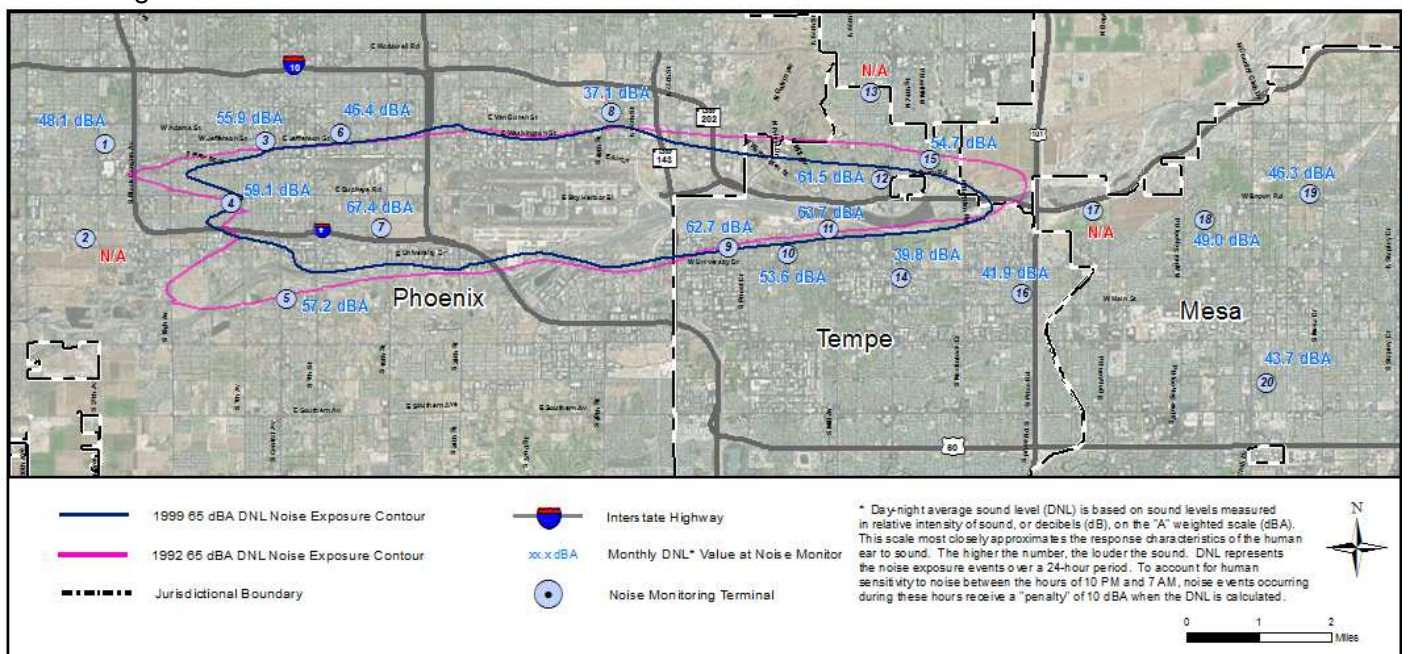
Airport Operations

Aircraft operations generally fluctuate due to seasonal and passenger demand. The graphic below depicts operation totals at Phoenix Sky Harbor International Airport (PHX), Phoenix Deer Valley Airport (DVT) and Phoenix Goodyear Airport (GYR). Examples of peak travel times are spring break, major sporting events, the end of the school year and winter holidays.



Noise Monitoring Sites

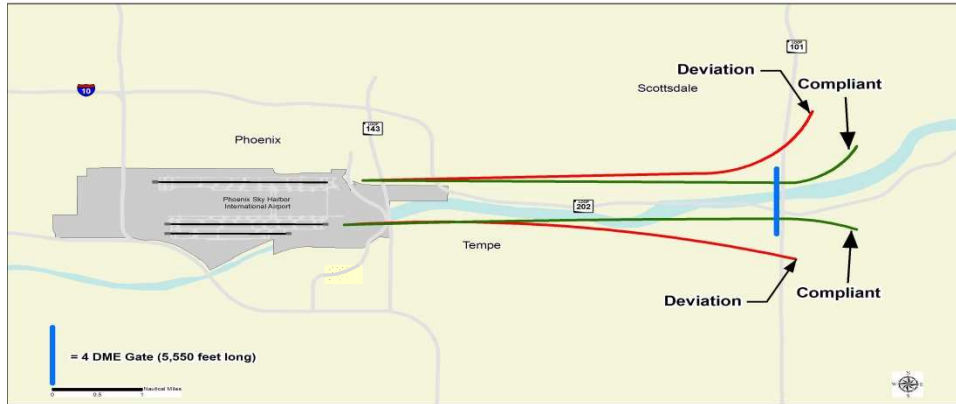
Noise Monitors: PHX has 20 noise monitors in the communities surrounding the Airport. They are located underneath the arrival and departure paths and in areas close to the Airport's noise contours. The monitors record aircraft noise events on a continual basis which then are compared with actual flight data from the FAA. Staff can then tie noise complaints to aircraft operations and any noise events correlated with those flights. Staff also monitors changes in monthly and annual noise readings at each location.



Note: Noise Monitoring Sites with an "N/A" did not provide usable data for the preceding month due to maintenance or operational testing, or non-aircraft noise events around the site.

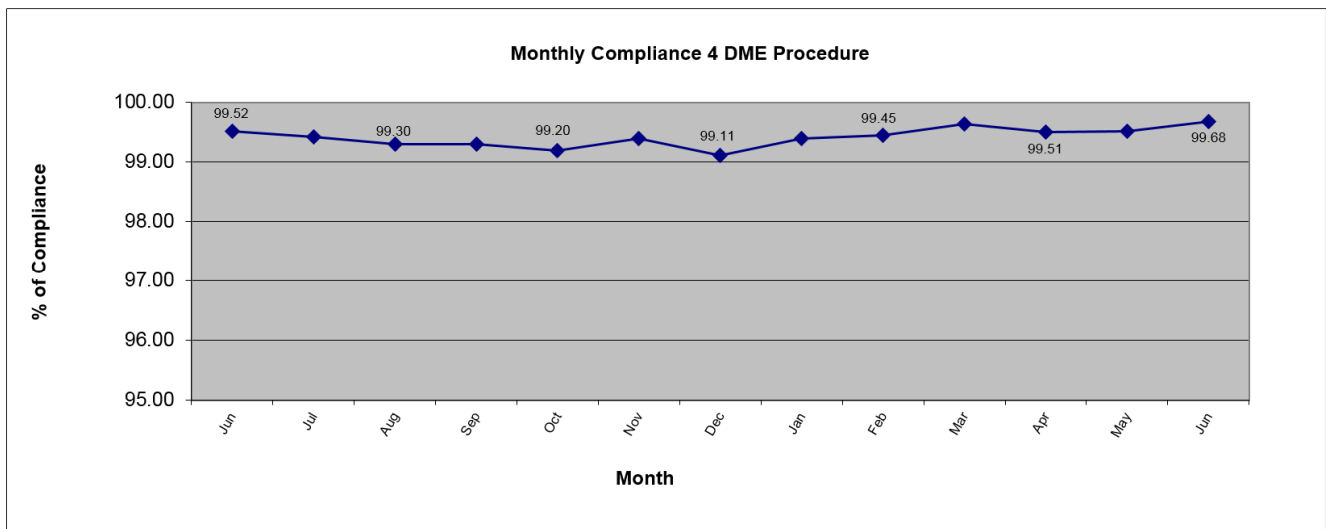
Fly Friendly Procedures

4 DME: The 4 DME (Distance Measuring Equipment) departure procedure directs jet aircraft departing to the east to travel generally along the Salt River for approximately 6 miles from the airport before turning. In the event that an aircraft deviates from the 4 DME departure procedure, Airspace and Noise Section staff will contact the carrier to determine the reason for the deviation and encourage future compliance.



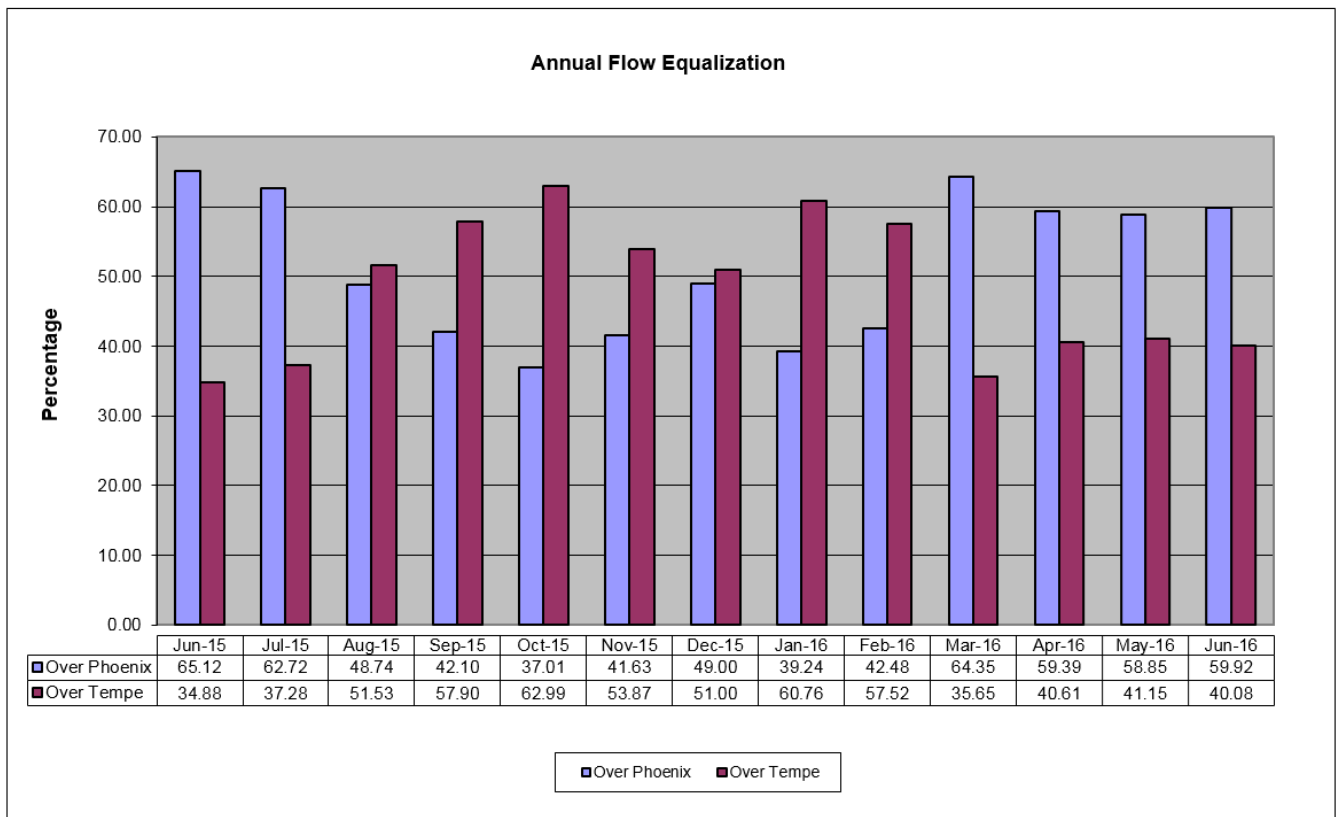
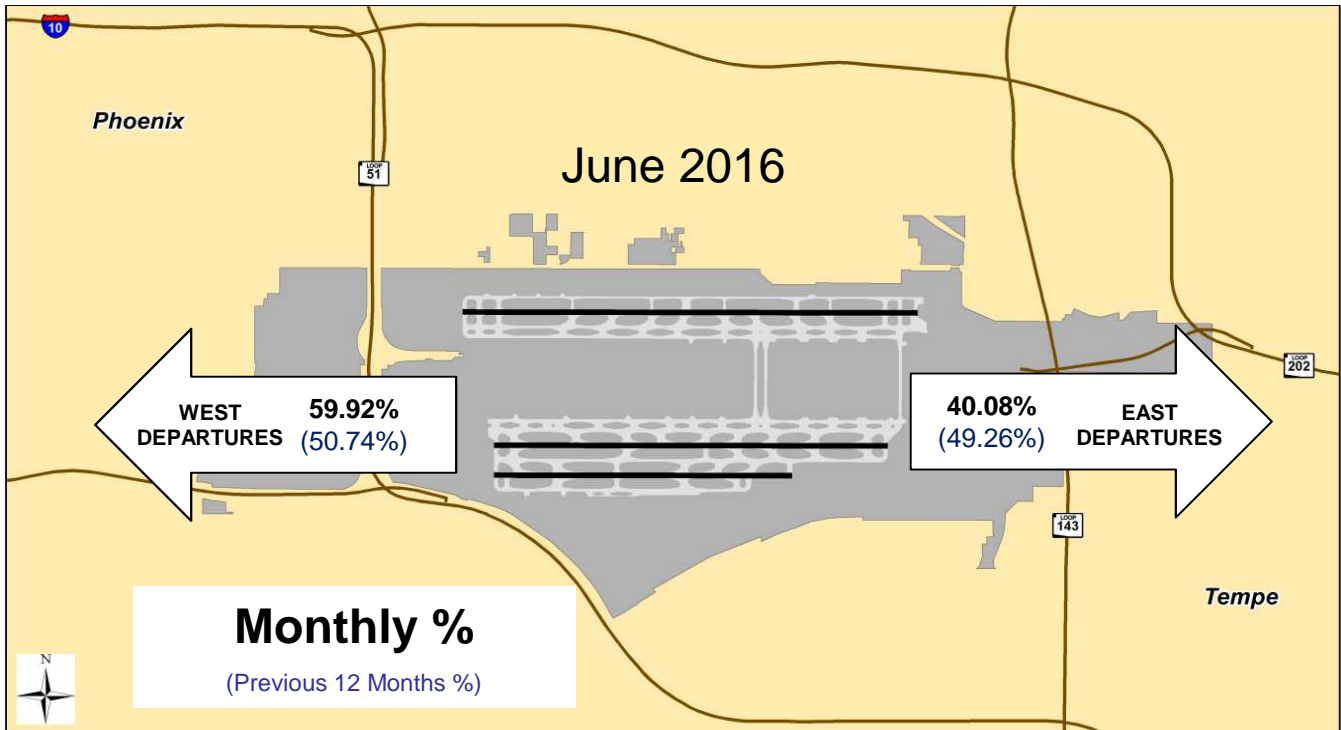
June 2016 4DME compliance rate: 99.68%

May 2016 4 DME Deviations			
Operators with 75 or more jet flights to the east shown			
Airline Name	Deviations	Total Departures to the East	% Compliance
American Airlines	4	2,062	99.81
Southwest Airlines	6	1894	99.68
Mesa Airlines	1	581	99.83
SkyWest Airlines	0	464	100.00
Delta Airlines	0	291	100.00
United Airlines	0	252	100.00
General Aviation	5	128	96.10
FedEx Airlines	0	94	100.00
Frontier Airlines	0	92	100.00
Alaska Airlines	0	76	100.00



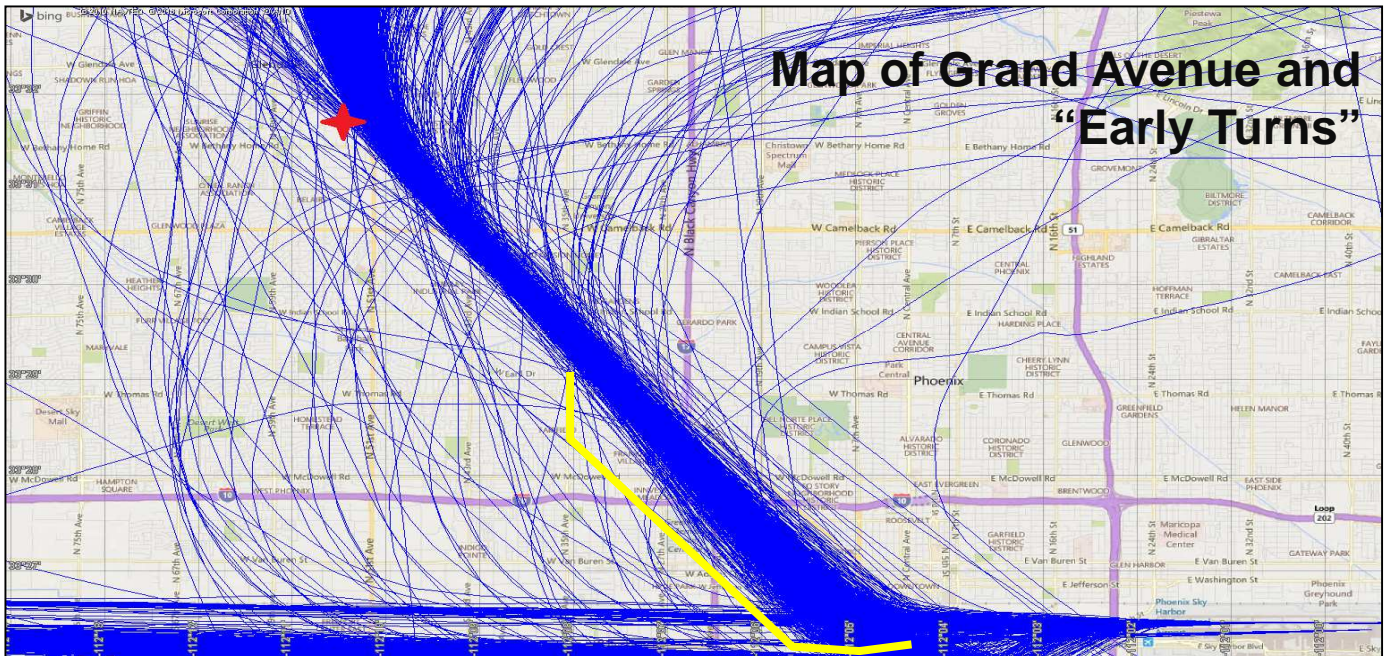
Fly Friendly Procedures Continued

Equalization: Phoenix Sky Harbor International Airport has a goal to equalize the amount of aircraft departures between the east and west over an **annualized** period. Because aircraft need to fly into the wind for added lift, there are times when weather can cause longer periods of flow in one direction versus the other.



“Early Turns” - Grand Avenue Month of June 2016

While a formal turning “gate” does not exist for RNAV northwest departures, the City has informally established a gate for monitoring purposes; generally depicted by the yellow line on the map below. Staff monitors the amount of jet aircraft that turn back to due north or east before going past the informal gate and publishes that data so that the community has a sense of flight tracks that deviate from the RNAV corridor



"Early Turns" - Grand Avenue 2016	
Counts derived from subjective analysis and subject to change	
Month	Counts
January	69
February	21
March	25
April	49
May	31
June	29
July	
August	
September	
October	
November	
December	
Year To Date	224

**“Early Turns” - Grand Avenue
Month of June 2016 Continued
June 1-30 “Early Turns” Info Table**

#	Operation Time	Type	Flight	AC Type	RWY	Destination
1	2016-06-22 19:55:48	Commercial	AAL437	A321	25R	ORD
2	2016-06-02 19:11:21	Commercial	AAL486	A321	25R	ORD
3	2016-06-26 00:24:24	Commercial	AAL522	A321	26	BWI
4	2016-06-24 12:36:46	Commercial	AAL544	A321	25R	DFW
5	2016-06-21 16:02:06	Commercial	AAL551	A321	25R	DFW
6	2016-06-24 12:38:53	Commercial	AAL566	A321	25R	MCO
7	2016-06-21 16:09:14	Commercial	AAL634	A320	25R	PIT
8	2016-06-13 15:52:59	Commercial	ASH5660	CRJ9	25R	TUS
9	2016-06-16 15:26:15	Commercial	ASH5694	CRJ9	25R	ABQ
10	2016-06-24 12:50:19	Commercial	DAL421	B739	25R	JFK
11	2016-06-05 00:11:49	Commercial	JBU136	A320	26	JFK
12	2016-06-24 12:34:18	Privately Registered	N132CE	C650	25L	OKC
13	2016-06-08 01:36:29	Privately Registered	N403DP	LJ35	25L	DVT
14	2016-06-15 17:33:22	Privately Registered	N78MD	C550	25R	DIK
15	2016-06-08 18:01:18	Privately Registered	N860SM	C680	25L	BFI
16	2016-06-26 16:18:16	Privately Registered	N90Z	C550	25R	IMT
17	2016-06-08 20:10:00	Commercial	SKW3066	CRJ2	25R	FLG
18	2016-06-23 13:07:44	Commercial	SWA1317	B733	26	LIT
19	2016-06-10 21:15:16	Commercial	SWA1353	B737	25R	BNA
20	2016-06-15 12:45:09	Commercial	SWA1358	B737	25R	PIT
21	2016-06-02 19:21:15	Commercial	SWA2997	B738	25R	MKE
22	2016-06-03 16:51:35	Commercial	SWA3113	B733	25R	ABQ
23	2016-06-14 20:03:37	Commercial	SWA3469	B737	25L	MSP
24	2016-06-28 16:42:10	Commercial	SWA350	B738	25R	LAS
25	2016-06-26 21:54:40	Commercial	SWA527	B737	25R	TUL
26	2016-06-12 18:24:00	Commercial	SWA847	B737	25R	SEA
27	2016-06-03 08:30:39	Commercial	SWA939	B738	25R	BWI
28	2016-06-02 16:42:19	Commercial	UAL1911	B739	25R	EWR
29	2016-06-26 13:32:11	Commercial	UAL344	A319	25R	DEN