

# ***PHX DVT GYR***

 CITY OF PHOENIX AVIATION DEPARTMENT

## **Monthly Noise Report**

**July 2015**

### Contents

- Page 2 – Introduction/Summary
- Page 3 – Noise Complaints
- Page 4 – Airport Operation Totals & Noise Monitoring Sites
- Page 5 – Fly Friendly Procedures
- Page 7 – “Early Turns” Grand Avenue

# Introduction/Summary

The Noise Information Office at Phoenix Sky Harbor International Airport (PHX) collects aircraft noise monitoring and flight operations data to provide the City of Phoenix with up-to-date information concerning aircraft noise exposure to the communities surrounding the Airport. Additionally, Noise Office staff receive and address complaints or concerns from citizens regarding aircraft noise through either the noise hotline (844-244-7430) or the electronic complaint form available on the PHX Web page: <https://skyharbor.com/NoiseComplaint.aspx>.

The following report provides a summary of the data collected by the Noise Office. Each section of the report is intended to show how trends in operation counts, flight direction, complaints, and adherence to the noise abatement procedures are independent of each other and the generation of noise from these operations.

## Summary:

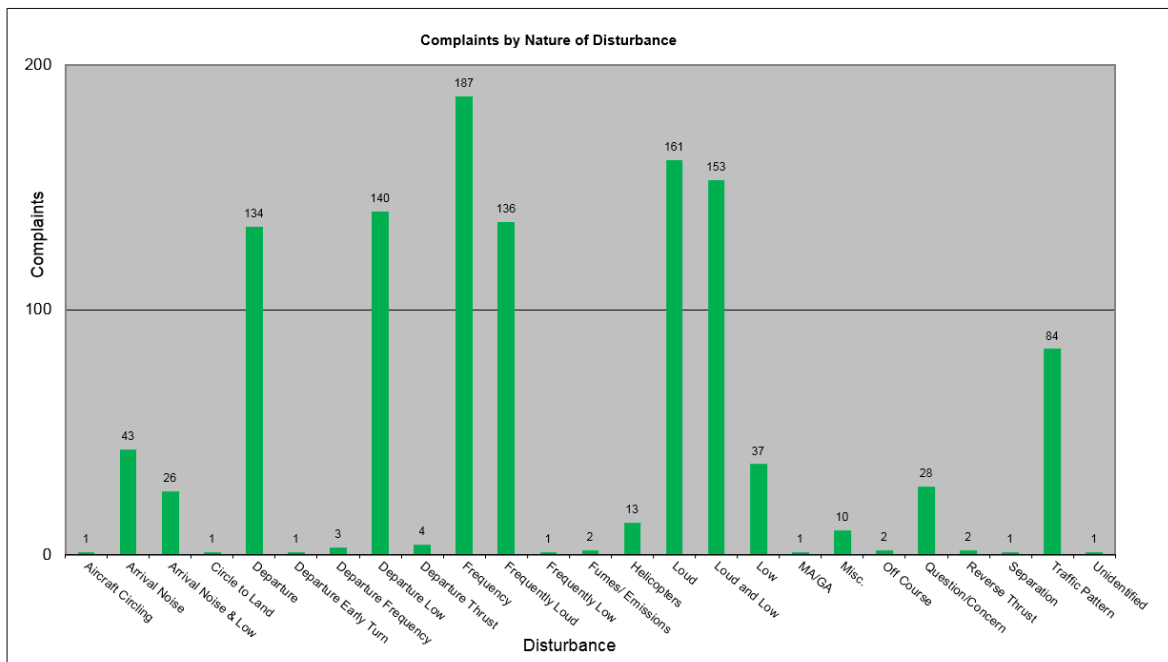
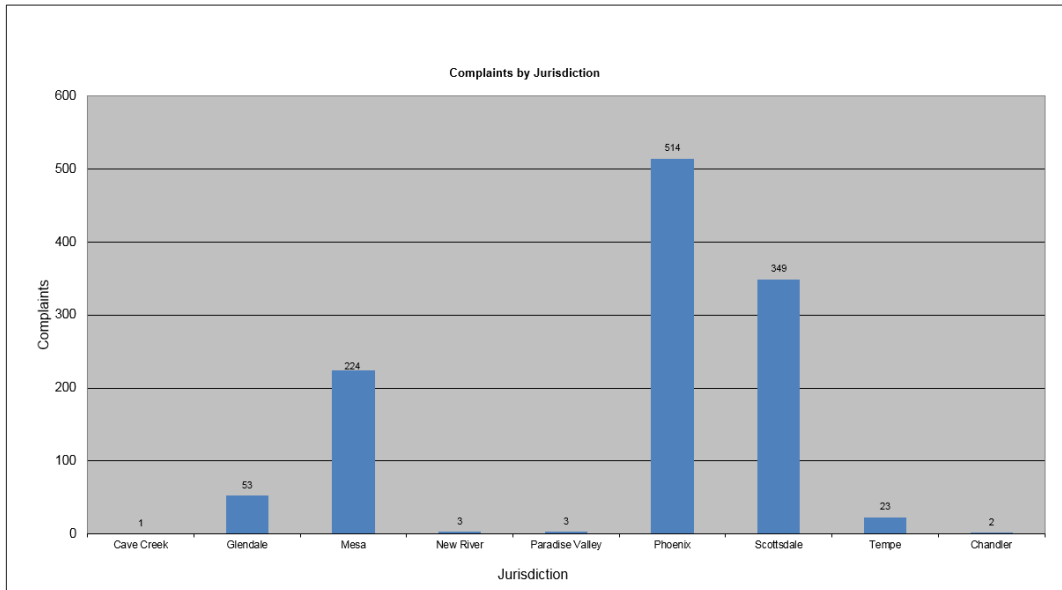
- The Noise Information Office received 1,172 complaints from 163 households in July 2015.
- PHX had 37,888 operations in July 2015. This is a 4.0% increase from June 2015. Phoenix Goodyear Airport (GYR) had 10,967 operations in July 2015. This is a 10.4% increase from June 2015. Phoenix Deer Valley Airport (DVT) had 30,004 operations in July 2015. This is a 5.0% increase from June 2015.
- The 4 DME Compliance Rate for July 2015 was 99.42%.
- PHX operated 62.72% westerly and 37.28% easterly in the month of July 2015.

# July 2015 Noise Complaints

**Complaints:** Many factors contribute to the amount of complaints received each month and by how many people. Complaint totals are rarely consistent due to factors ranging from one unusual flight event that generates multiple complaints from a large group of people, a bad weather day or change in the weather, or a new homeowner that did not notice the flight paths before they purchased their home.

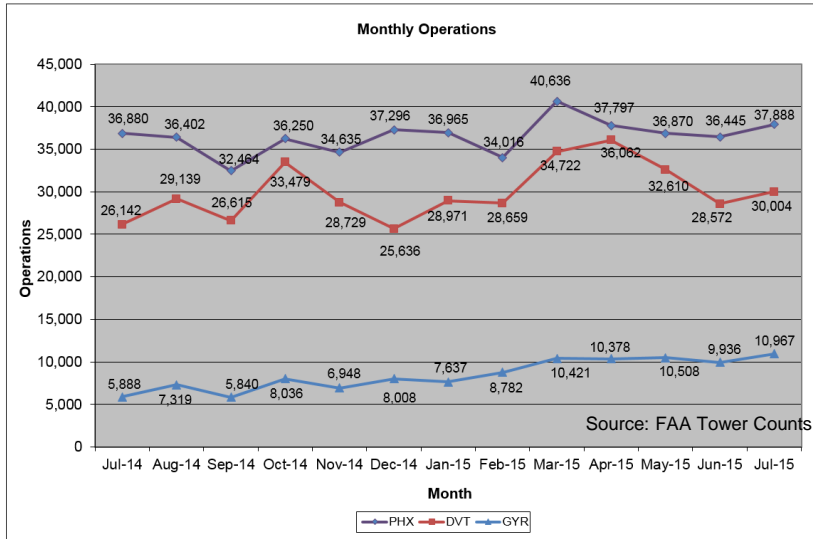
## Complaint Statistics

	Jul-14			Jul-15	
	Households	Complaints		Households	Complaints
PHX- Sky Harbor	0	0		157	1,158
DVT- Deer Valley	2	4		6	14
GYR- Goodyear	1	1		0	0
<b>Totals</b>	<b>3</b>	<b>5</b>		<b>163</b>	<b>1,172</b>



# Airport Operations

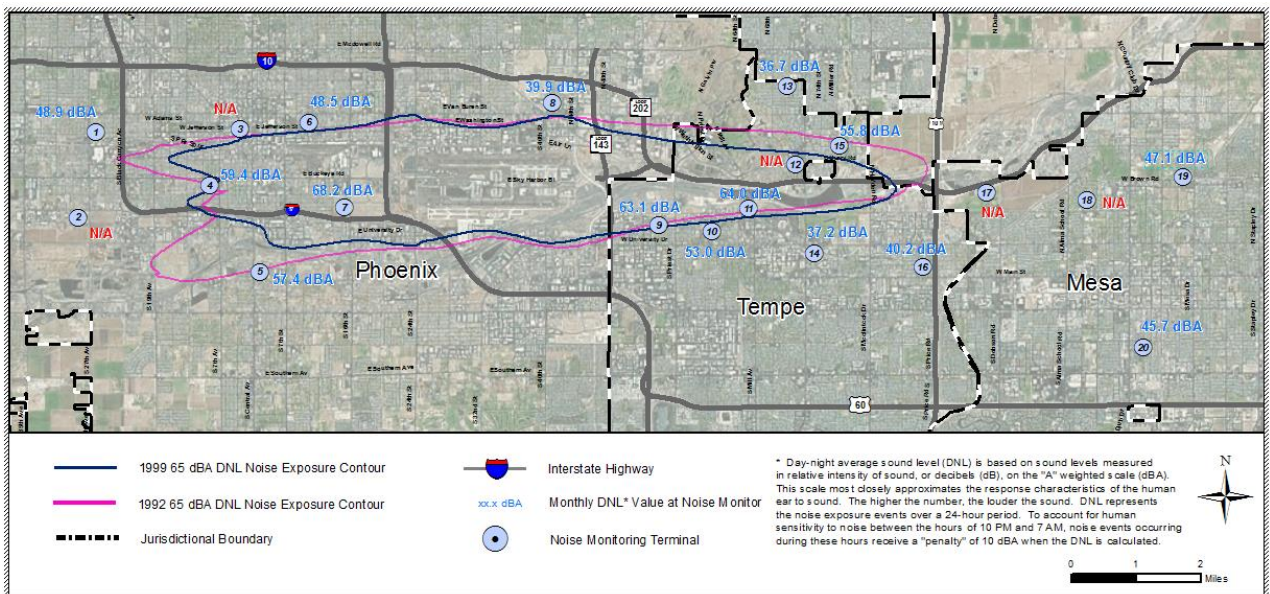
Aircraft operations generally fluctuate due to seasonal and passenger demand. The graphic below depicts operation totals at Phoenix Sky Harbor International Airport (PHX), Phoenix Deer Valley Airport (DVT) and Phoenix Goodyear Airport (GYR). Examples of peak travel times are spring break, major sporting events, the end of the school year and winter holidays.



## Noise Monitoring Sites

**Noise Monitors:** PHX has 20 noise monitors in the communities surrounding the Airport. These are located underneath the arrival and departure paths and in areas close to the Airport's noise contours. The monitors record aircraft noise events on a continual basis which then are correlated with actual flight data from the FAA. Noise Office staff can then associate noise complaints to aircraft operations and any noise events correlated with those flights. The Noise Office also monitors changes in monthly and annual noise readings at each location.

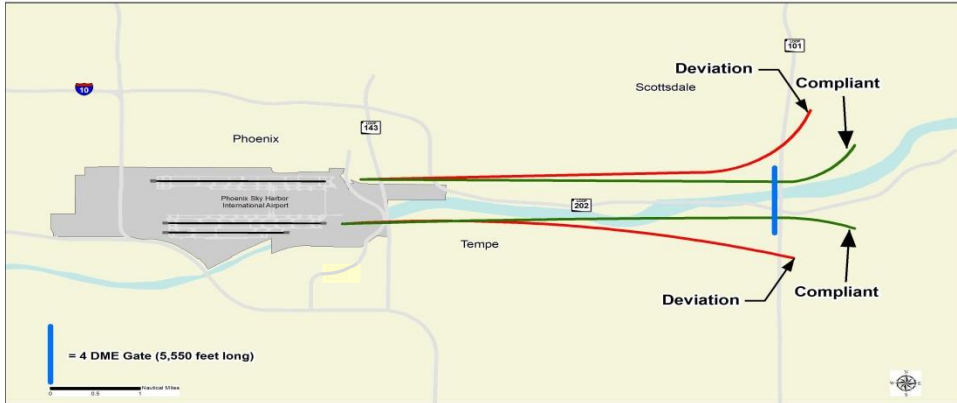
On the whole, aircraft related noise is on a decline from historical levels when older aircraft were operating at Phoenix Sky Harbor International Airport.



Note: Noise Monitoring Sites with an "N/A" may be due to maintenance being performed at or around the site which may be out of the control of the Aviation Department. The Noise Office is working to ensure all sites are operational.

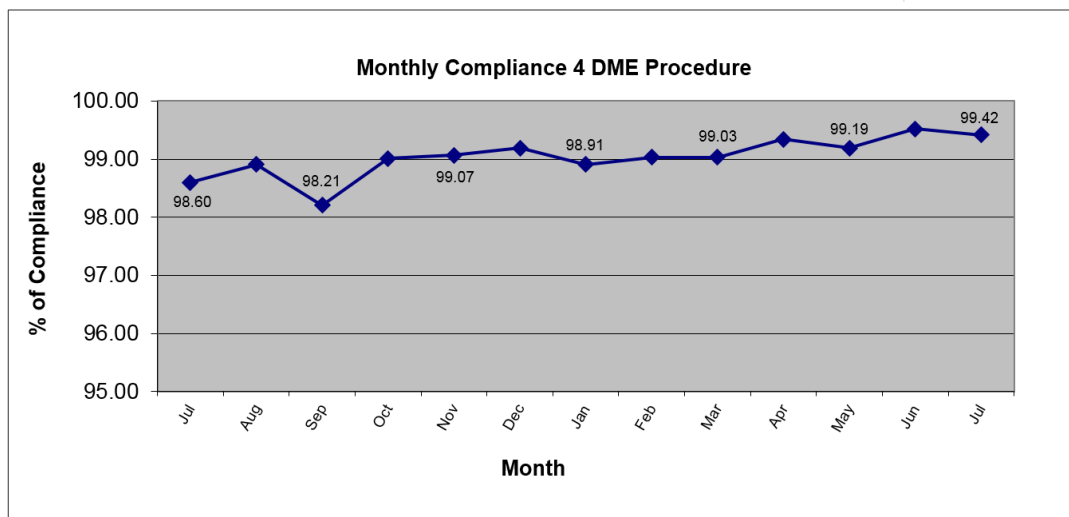
# Fly Friendly Procedures

**4 DME:** The 4 DME (Distance Measuring Equipment) departure procedure directs jet propelled aircraft departing to the east to travel generally along the Salt River for approximately 5 miles from the airport before turning. In the event that an aircraft deviates from the 4 DME departure procedure, Noise Office staff will contact the carrier to determine the reason for the deviation and encourage future compliance.



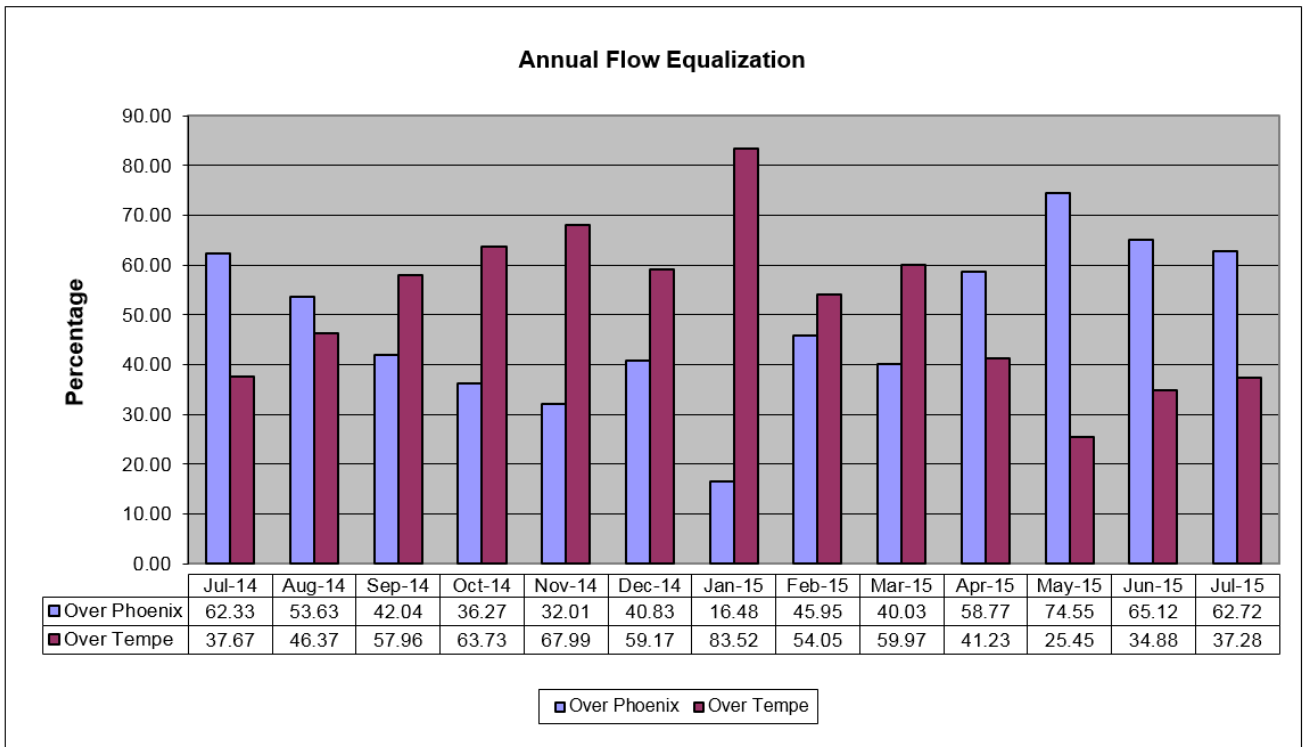
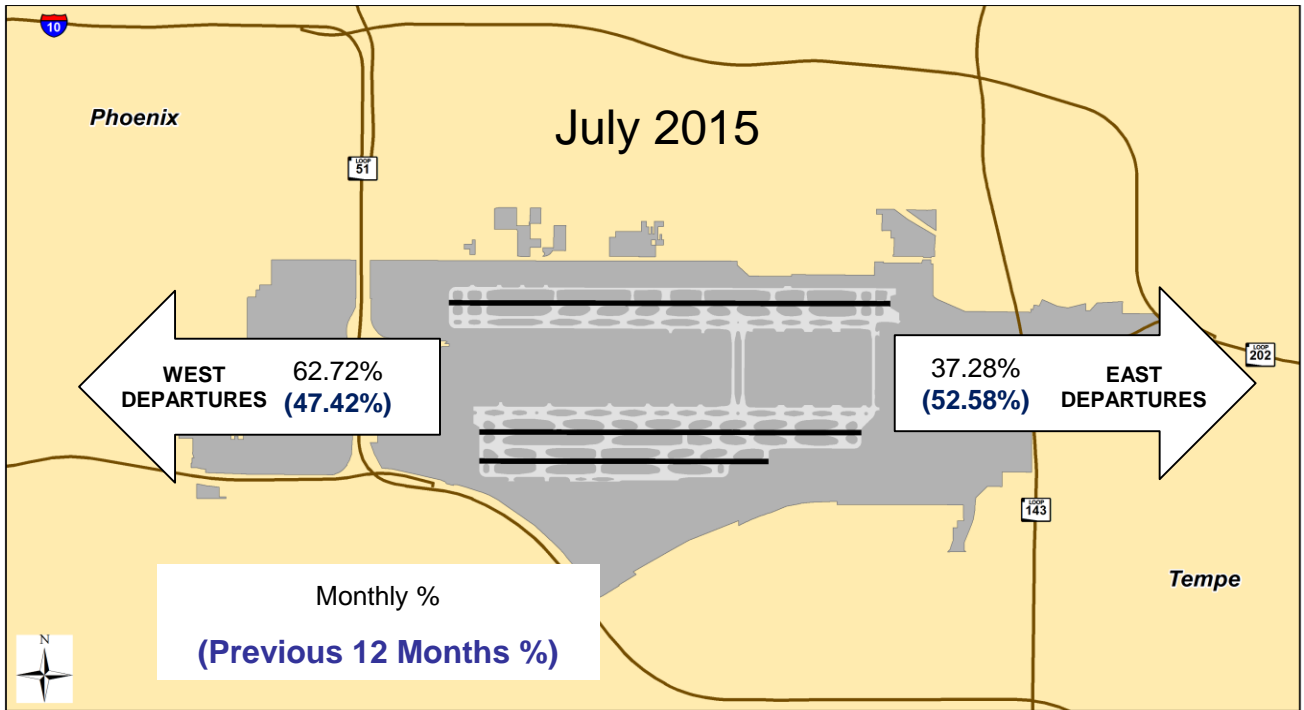
July 2015 4 DME compliance rate: 99.42%

July 2015 4 DME Deviations			
Operators with 75 or more jet flights to the east shown			
Airline Name	Deviations	Total Departures to the East	% Compliance
American Airlines	8	2,239	99.64
Southwest Airlines	11	1,822	99.40
SkyWest Airlines	1	636	99.84
Mesa Airlines	2	523	99.62
Delta Airlines	0	300	100.00
United Airlines	0	165	100.00
General Aviation	12	109	88.99
Fed Ex	0	90	100.00



# Fly Friendly Procedures Continued

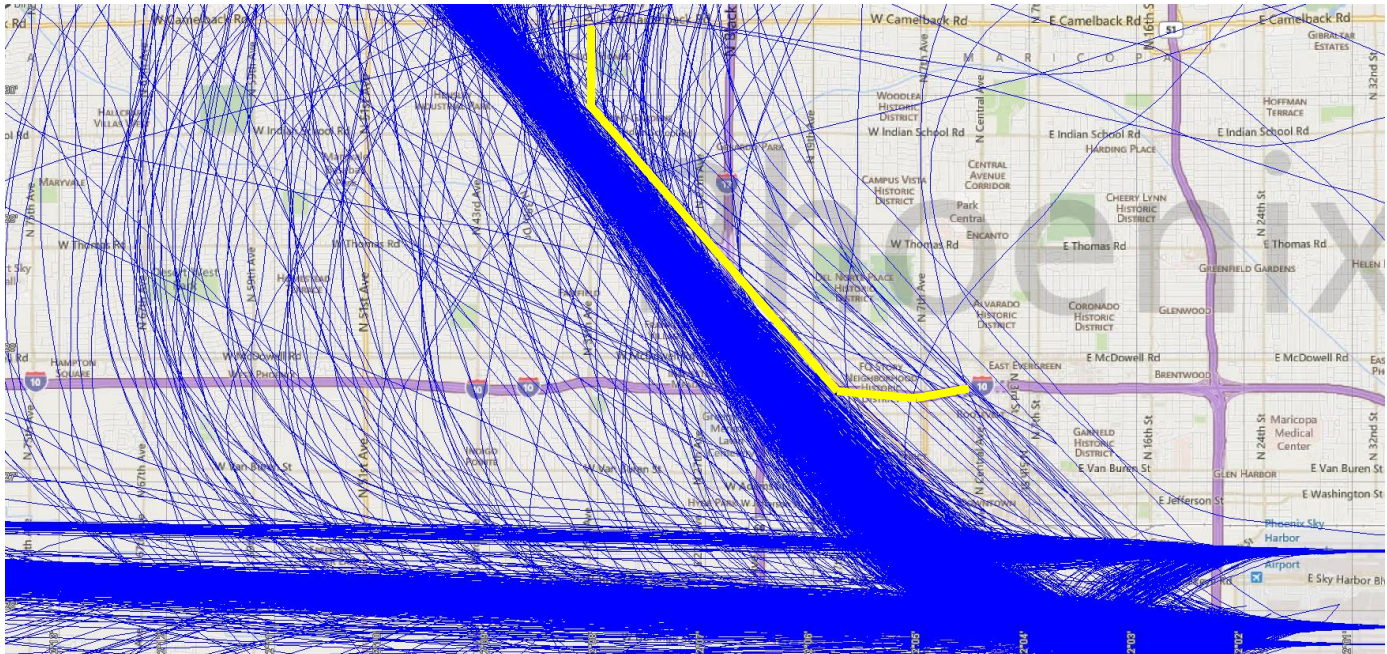
**Equalization:** Phoenix Sky Harbor International Airport has a goal to equalize the amount of aircraft departures between the east and west over an annualized period. Monthly equalization data is shared with the FAA to help meet this goal. Because aircraft need to fly into the wind for added lift, there are times when weather can cause longer periods of flow in one direction versus the other.



# “Early Turns” - Grand Avenue Month of July 2015

The graphic and table presented below was generated by the City of Phoenix’s Noise Information Office and is intended for display purposes only. The criteria used to gather and display the information is the interpretation of the Noise Office. On November 14, 2014 the FAA instructed PHX air traffic controllers to not issue early turns to aircraft unless doing so for safety purposes. The “early turns” captured below are reported to the FAA and respective airlines for analysis and corrective action as appropriate. The coordinate based “TWSND” waypoint (not depicted on map) is approximately located at the intersection of Grand Avenue and West Bethany Home Road and is a fly-by waypoint.

## Map of Grand Avenue and “Early Turns”



### "Early Turns" - Grand Avenue 2015

Counts derived from subjective analysis and subject to change

Month	Counts
January	71
February	40
March	69
April	71
May	154
June	85
July	115
August	-
September	-
October	-
November	-
December	-
Year To Date	605

# “Early Turns” - Grand Avenue Month of July 2015 Continued July “Early Turns” Information Table

Operation Time	Type	Flight	Aircraft	Destination
2015-07-02 12:36:29	Commercial	AAL1312	B738	JFK
2015-07-08 00:09:38	Commercial	AAL2020	A321	CLT
2015-07-16 23:11:50	Commercial	AAL2020	A321	CLT
2015-07-02 00:28:27	Commercial	AAL453	A321	ORD
2015-07-08 17:16:05	Commercial	AAL456	A321	SLC
2015-07-24 22:50:56	Commercial	AAL463P	A321	SEA
2015-07-31 17:27:58	Commercial	AAL523	A319	RNO
2015-07-18 16:46:34	Commercial	AAL552	A319	SMF
2015-07-31 17:43:51	Commercial	AAL572	A319	BOI
2015-07-05 15:39:30	Commercial	AAL618	A319	BWI
2015-07-17 22:39:47	Commercial	AAL632	A321	JFK
2015-07-31 17:42:01	Commercial	AAL636	A320	LAS
2015-07-17 22:32:57	Commercial	AAL855	A319	IAH
2015-07-15 15:11:44	Commercial	ASA633	B738	SEA
2015-07-31 17:34:41	Commercial	ASH5573	CRJ9	LGB
2015-07-08 18:59:49	Commercial	ASH5610	CRJ9	ABQ
2015-07-27 19:01:59	Commercial	ASH5610	CRJ9	ABQ
2015-07-02 09:23:24	Commercial	CTF155	BE40	SDL
2015-07-26 07:24:25	Commercial	DAL1492	MD90	MSP
2015-07-05 15:46:39	Commercial	DAL2046	B738	ATL
2015-07-15 13:37:13	Commercial	DAL2134	MD90	MSP
2015-07-05 09:25:44	Commercial	DAL2292	MD90	MSP
2015-07-18 16:08:33	Commercial	DAL2317	B752	LAS
2015-07-08 16:17:03	Commercial	DAL899	MD90	MSP
2015-07-28 16:49:25	Commercial	DAL899	MD90	MSP
2015-07-31 17:29:59	Commercial	DAL899	MD90	MSP
2015-07-24 10:44:22	Commercial	EJA638	C56X	SDL
2015-07-07 14:13:51	Commercial	FFT1308	A320	ORD
2015-07-16 14:12:30	Commercial	FFT1308	A320	ORD
2015-07-18 16:06:03	Commercial	FFT1365	A319	SFO
2015-07-27 20:35:42	Commercial	GTI105	B762	CVG
2015-07-22 00:28:02	Commercial	JBU136	A320	JFK
2015-07-21 08:15:38	Privately Registered	N100DS	C550	PWK
2015-07-11 13:12:44	Privately Registered	N118MM	C650	APA
2015-07-15 14:44:56	Privately Registered	N144CA	C650	COS
2015-07-19 13:22:24	Privately Registered	N144CA	C650	PWA
2015-07-02 11:52:11	Privately Registered	N431MS	C550	GPI
2015-07-25 10:20:39	Privately Registered	N604DT	CL60	SLC
2015-07-31 17:31:15	Privately Registered	N610RT	C750	SAF



# “Early Turns” - Grand Avenue Month of July 2015 Continued July “Early Turns” Information Table

2015-07-03 14:49:56	Privately Registered	N632KA	FA20	SDL
2015-07-20 16:12:28	Privately Registered	N75WP	C560	HDN
2015-07-23 14:44:32	Privately Registered	N75WP	C560	SJN
2015-07-19 15:15:49	Privately Registered	N860SM	C680	MEM
2015-07-21 14:07:33	Privately Registered	N866G	GALX	ALB
2015-07-31 18:47:54	Privately Registered	N989AL	LJ35	FNL
2015-07-05 08:56:10	Commercial	SKW2945	CRJ2	PHX
2015-07-05 10:58:10	Commercial	SKW2945	CRJ2	GJT
2015-07-05 10:22:26	Commercial	SKW2948	CRJ2	DRO
2015-07-26 09:04:56	Commercial	SKW2948	CRJ2	DRO
2015-07-27 13:45:54	Commercial	SKW2959	CRJ2	FLG
2015-07-31 17:32:58	Commercial	SKW2959	CRJ2	FLG
2015-07-08 23:01:12	Commercial	SKW2962	CRJ2	FLG
2015-07-22 23:42:52	Commercial	SKW2962	CRJ2	FLG
2015-07-14 21:52:28	Commercial	SKW2975	CRJ2	DRO
2015-07-18 19:06:42	Commercial	SKW2975	CRJ2	DRO
2015-07-12 20:11:24	Commercial	SKW2980	CRJ2	MRY
2015-07-18 21:57:29	Commercial	SKW2982	CRJ2	FLG
2015-07-22 19:14:59	Commercial	SKW2991	CRJ2	GJT
2015-07-27 07:57:25	Commercial	SKW4755	CRJ7	SLC
2015-07-19 18:35:03	Commercial	SKW4829	CRJ7	SEA
2015-07-22 18:55:46	Commercial	SKW4829	CRJ7	SEA
2015-07-16 17:39:26	Commercial	SKW6201	CRJ7	DEN
2015-07-31 17:36:32	Commercial	SKW6201	CRJ7	DEN
2015-07-17 21:00:44	Commercial	SWA114	B738	MDW
2015-07-29 15:03:48	Commercial	SWA134	B737	ATL
2015-07-07 19:41:57	Commercial	SWA1369	B737	STL
2015-07-24 20:10:34	Commercial	SWA1369	B737	STL
2015-07-18 16:12:16	Commercial	SWA1448	B737	LAS
2015-07-31 18:09:39	Commercial	SWA1728	B737	ABQ
2015-07-18 16:04:10	Commercial	SWA1941	B737	LAS
2015-07-18 15:59:59	Commercial	SWA1978	B737	LAS
2015-07-10 21:51:22	Commercial	SWA21	B737	DEN
2015-07-18 17:16:07	Commercial	SWA2117	B737	ELP
2015-07-28 05:37:30	Commercial	SWA2166	B733	SLC
2015-07-18 15:52:25	Commercial	SWA2198	B737	SJC
2015-07-31 18:28:35	Commercial	SWA2793	B738	OMA
2015-07-21 17:45:06	Commercial	SWA3133	B733	SLC
2015-07-31 18:34:36	Commercial	SWA3133	B733	SLC
2015-07-24 08:54:15	Commercial	SWA319	B737	CMH

# “Early Turns” - Grand Avenue Month of July 2015 Continued July “Early Turns” Information Table

2015-07-08 18:43:01	Commercial	SWA334	B737	DAL
2015-07-07 14:12:08	Commercial	SWA3591	B738	BWI
2015-07-31 17:45:43	Commercial	SWA3853	B737	PDX
2015-07-07 13:29:43	Commercial	SWA3856	B733	SLC
2015-07-17 20:56:37	Commercial	SWA4129	B737	BUR
2015-07-08 17:48:37	Commercial	SWA4197	B738	MCI
2015-07-10 18:16:44	Commercial	SWA4197	B738	MCI
2015-07-08 20:30:15	Commercial	SWA4221	B733	TUL
2015-07-17 21:59:32	Commercial	SWA429	B738	ABQ
2015-07-27 21:14:07	Commercial	SWA429	B738	ABQ
2015-07-12 13:01:06	Commercial	SWA4472	B737	GEG
2015-07-18 16:33:15	Commercial	SWA4489	B737	LAS
2015-07-13 14:32:44	Commercial	SWA4501	B737	CMH
2015-07-02 06:02:44	Commercial	SWA4538	B737	MDW
2015-07-06 06:01:17	Commercial	SWA4538	B737	MDW
2015-07-18 16:27:06	Commercial	SWA4574	B737	SEA
2015-07-26 10:23:00	Commercial	SWA4723	B737	RDU
2015-07-06 12:52:29	Commercial	SWA4755	B733	SMF
2015-07-09 12:21:43	Commercial	SWA501	B737	DTW
2015-07-07 17:43:50	Commercial	SWA504	B737	BNA
2015-07-08 16:38:32	Commercial	SWA504	B737	BNA
2015-07-31 18:13:05	Commercial	SWA514	B737	DEN
2015-07-08 13:18:37	Commercial	SWA590	B737	BOI
2015-07-24 19:52:38	Commercial	SWA661	B737	MDW
2015-07-24 08:38:48	Commercial	SWA690	B738	MDW
2015-07-02 20:02:16	Commercial	SWA705	B737	DEN
2015-07-10 18:03:55	Commercial	SWA798	B737	BUF
2015-07-20 18:28:39	Commercial	SWA798	B737	BUF
2015-07-24 18:05:43	Commercial	SWA798	B737	BUF
2015-07-09 10:11:39	Commercial	SWA922	B737	SDF
2015-07-18 15:46:53	Commercial	UAL1605	B738	LAS
2015-07-02 12:53:57	Commercial	UAL1758	B738	DEN
2015-07-06 16:01:49	Commercial	UAL2000	A319	ORD
2015-07-13 14:50:17	Commercial	UAL2000	A319	ORD
2015-07-16 15:15:17	Privately Registered	UNKNOWN	C56X	UNK
2015-07-03 04:35:21	Commercial	UPS850	B763	ABQ