



**PHX**

LAND REUSE  
STRATEGY

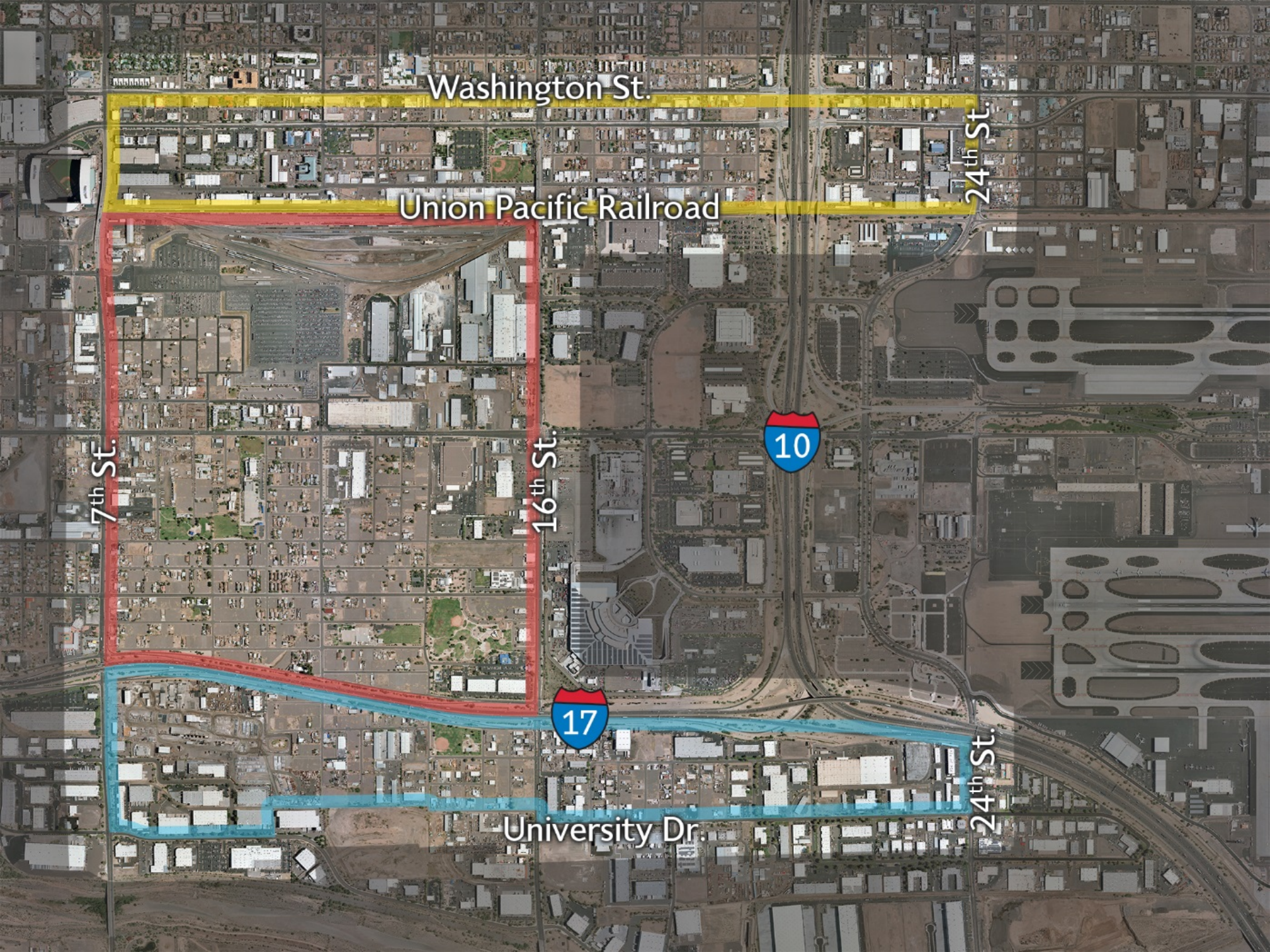
# Community Information Meetings

February 9, 10 and 11, 2016

visit: <https://skyharbor.com/LandReuseStrategy>

# Meeting Agenda

- Why Prepare the Reuse Strategy?
- Program History
- Meeting Objectives
- Land Reuse Strategy Overview
- Community Vision for Success



Washington St.

Union Pacific Railroad

24th St.

7th St.

16th St.



University Dr.

24th St.

# Program History

- Community Noise Reduction Program (CNRP)
  - ✓ Voluntary Acquisition & Relocation Services
  - ✓ Residential Sound Mitigation Services
  - ✓ Sound Insulation Mitigation Services



Community Noise Reduction Program

Voluntary Acquisition & Relocation Services

V A R S

# Voluntary Acquisition & Relocation Services

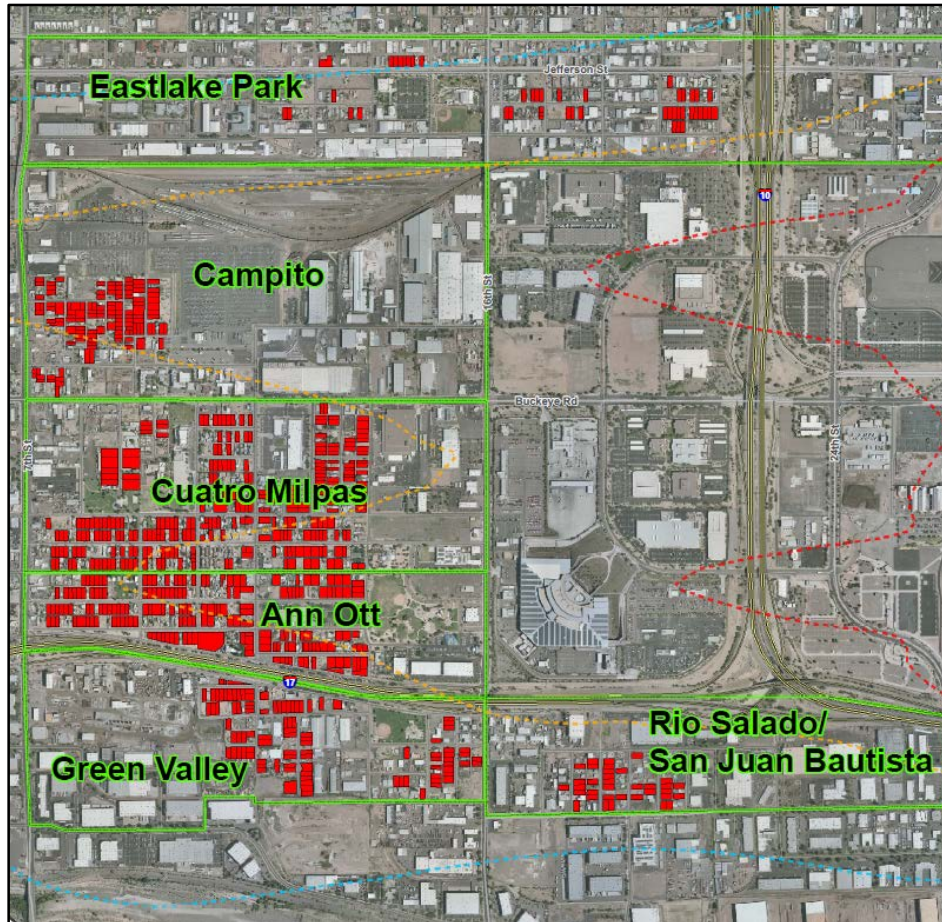


Before



After

# VARS Program



# Why Prepare the Reuse Strategy?



**FAA Grant  
Obligation**



**Economic  
Development**



**Revitalize the  
Community**

# Land Reuse Strategy Overview





**Land  
Inventory**



**Reuse  
Strategy**

# Study Elements



**Community  
Engagement**



**Inventory**

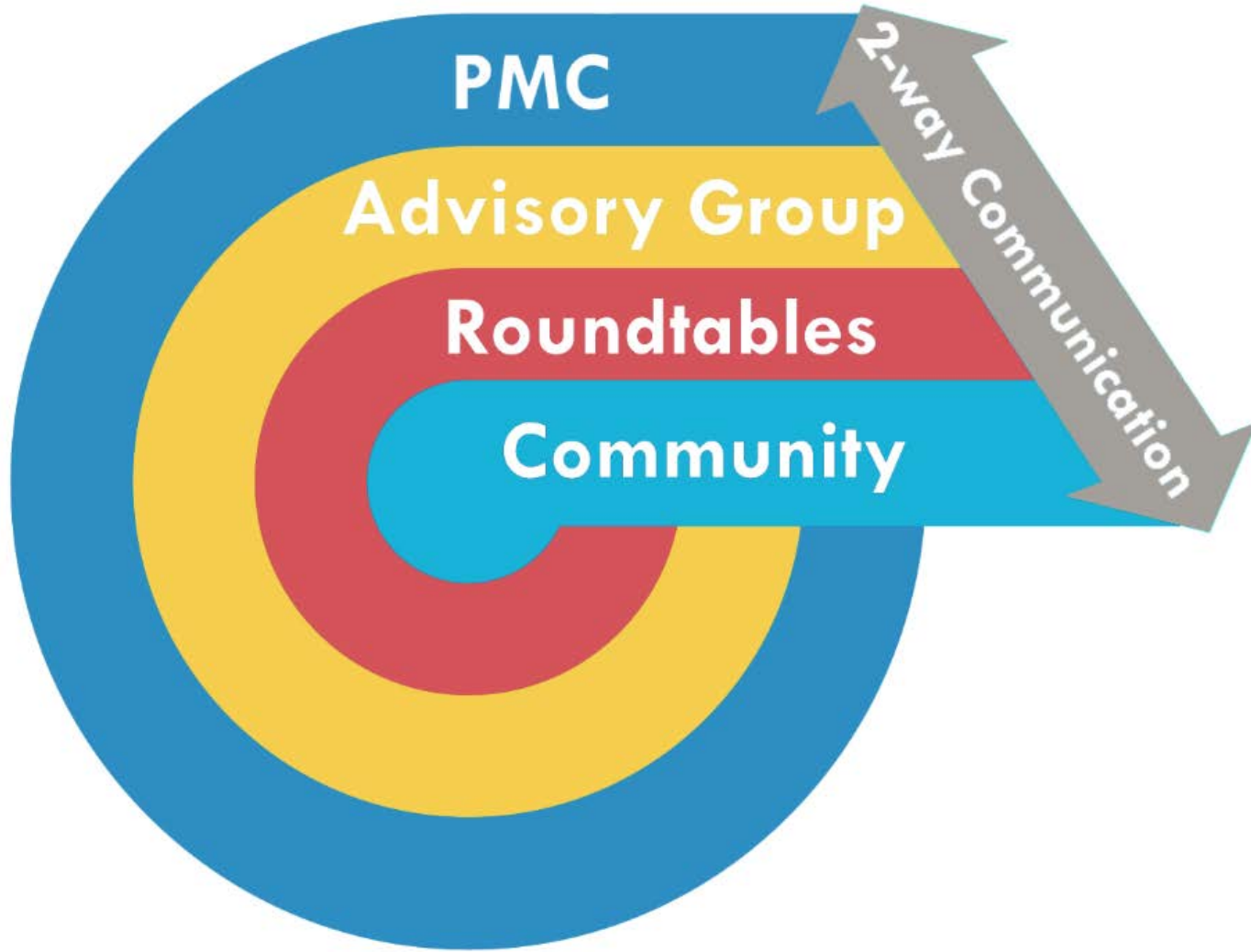


**Market  
Analysis**



**Strategy  
Development**







## Community Engagement

- Cultural Guidance
- Informational Materials
- mySidewalk – digital engagement
- ASU Decision Theater



## Inventory

- Benchmarking Analysis
- Data Collection
- Review Other Plans
- Environmental Review
- Constraints Analysis
- Broad-based Valuation



## Market Analysis

- Potential Land Uses
- Preliminary Market Analysis
- Demand Allocation Strategy
- Implementation Models
- Retention/Disposition Strategy

**E**conomic Viability  
**O**perational Efficiency  
**N**atural Resource Conservation  
**S**ocial Responsibility



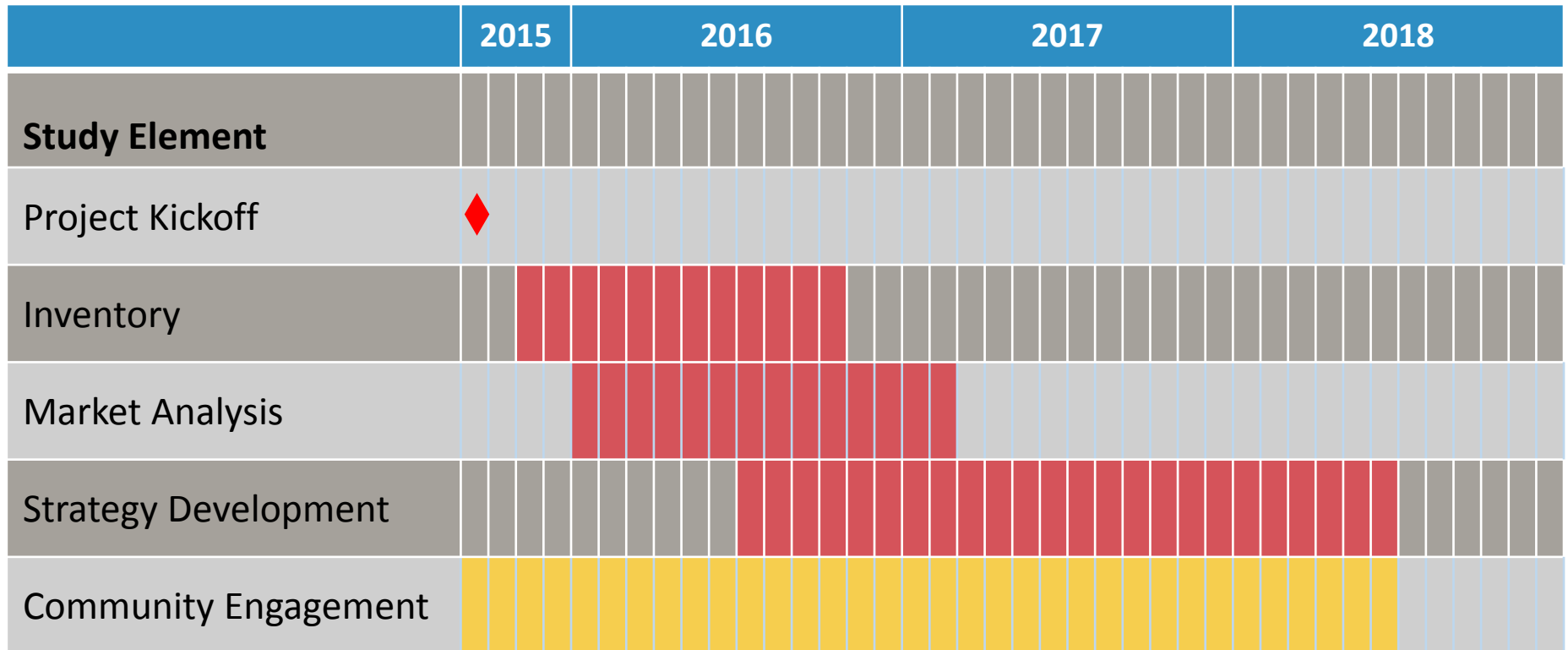




## Strategy Development

- Develop Draft Strategy
- Stakeholder Review
- City Staff Review
- Phoenix Aviation Advisory Board
- City Council
- FAA Review
- Publish Final Strategy

# Study Timeline



# Airport Compatible Land Redevelopment Program

- FAA Pilot Program
- Scope
- Status
- Anticipated Timeline

# Other Project Progress to Date

# Community Engagement Plan



## Community Engagement Plan

The success of the Airport Compatible Land Reuse Strategy is dependent upon broad and strong community consensus. The Community Engagement Plan will provide the framework to inform stakeholders and provide a feedback mechanism, assisting the project team in achieving that consensus.

This strategy will outline the overall guiding principles of the process as well as protocols, criteria and schedules to keep the project on track. It will focus on specific ways to effectively connect and engage the communities, how each group involved in the process will function and what role they hold, as well as outlining how the information will be reported and the timeframes for each task.



# Benchmarking Review

# Benchmarking Airports

- Seattle/Tacoma International
- Atlanta Hartsfield—Jackson International
- Fort Lauderdale—Hollywood International
- Detroit Metropolitan—Wayne County
- Baltimore/Washington International

# Questions



# Community Vision for Success

visit: <https://skyharbor.com/LandReuseStrategy>